



## DI 1 SERIES Outdoor Unit



“Do you want a wide range of compact solutions, offering premium comfort and high level of energy savings?”

TOSHIBA AIR SOLUTIONS > LIGHT COMMERCIAL > **DI 1 SERIES**

### EFFICIENCY

- **A++/A++ energy** label
- **Top class part load** efficiency
- Operation **down to 20% load**

### HIGH CONNECTIVITY

- Up to **50m piping** length
- **30m height difference** between the outdoor and the indoor units for perfect integration

### ADVANCED FUNCTIONALITIES

- System noise level down to 33dB(A) with **Night Time Operation** mode
- Benefit from a **power limitation** by 1% step between 50% and 100% load for a profitable management of you installation

### SO CONVENIENT

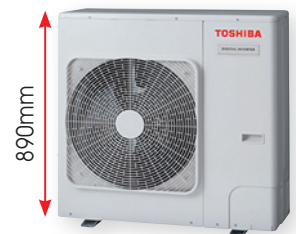
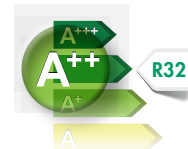
- **Self-diagnosis** function
- **Easy maintenance** of the components located just behind the removable corner panel

Totally redesigned for ever better performances, the highly compact Toshiba Digital Inverter is now using R32, an environmental oriented refrigerant with low global warming potential.

Rapid return on investment, guaranteed flexibility and maximum part load efficiency, all you would expect and more.

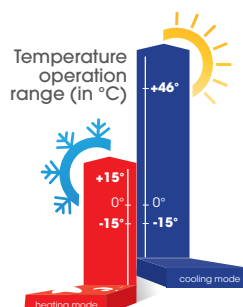
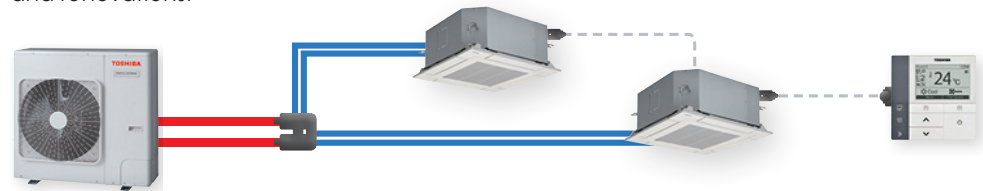
### A concentrate of efficiency

With capacity outputs up to 13kW concentrated in a package that is only 890mm in height and weighs just 69kg, our Digital Inverter is an ideal solution for limited space configurations without any compromises in efficiency.



### Superior adaptability anytime

DI is compatible with a wide choice of indoor units in 1:1 or Twin configurations, to answer your expectations from 15 sqm up to 160 sqm commercial spaces, both in new building and renovations.



### Make a profitable investment

Toshiba's inverter driven technology ensures a maximum system efficiency by matching precisely the compressor operation to the indoor demand load. The operation from -15°C to +46°C allows the system to operate all year round.

**whatever  
you need**



## Select your Indoor Unit and compatible Control Solution

### ➤ 4-WAY CASSETTES



**Standard cassette**  
RAV-RM\_UTP-E  
2 to 5 HP

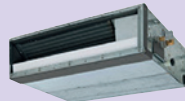


**Compact cassette**  
RAV-RM\_MUT-E  
1 to 2 HP

### ➤ DUCTS

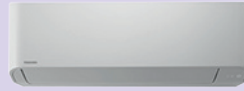


**Standard duct**  
RAV-RM\_BTP-E  
2 to 5 HP



**Slim duct**  
RAV-RM\_SDT-E  
1 to 2 HP

### ➤ HIGH WALL



**Standard high wall**  
RAV-RM\_KRTP-E  
1 to 3 HP

### ➤ CEILING



**Ceiling**  
RAV-RM\_CTP-E  
2 to 5 HP

### ➤ CONTROL



The **RBC-AMS55E-ES/EN** is the new local remote controller incorporating standard function and scheduling.

All indoor units are compatible with both R410A and R32 outdoor units.

## DIGITAL INVERTER 1 SERIES Performance Data

Outdoor unit	1 Ph models								3 Ph models							
	RAV-GM301ATP-E 1 HP	RAV-GM401ATP-E 1.5 HP	RAV-GM561ATP-E 2 HP	RAV-GM801ATP-E 3 HP	RAV-GM1101ATP-E 4 HP	RAV-GM1401ATP-E 5 HP	RAV-GM1101A18P-E 4 HP	RAV-GM1401A18P-E 5 HP								
Cooling capacity (min. - rated - max.)	0.9 - 2.5 - 3.0		0.9 - 3.6 - 4.0		1.5 - 5.0 - 5.6		1.5 - 6.7 - 8.0		3.0 - 9.5 - 11.2		3.0 - 12.0 - 13.2		3.0 - 9.5 - 11.2		3.0 - 12 - 13.2	
EER / SEER	4.24 / 5.94		4.00 / 5.76		3.21 / 6.34		3.02 / 5.81		3.31 / 6.15		2.8 / 5.71		3.31 / 6.15		2.8 / 5.71	
Energy efficiency class	C		A+		A+		A++		A+		A++		A+		A+	
Heating capacity (min. - rated - max.)	0.8 - 3.4 - 4.5		0.8 - 4.0 - 5.0		1.5 - 5.3 - 6.3		1.5 - 7.7 - 9.0		3.0 - 11.2 - 13.0		3.0 - 13 - 16.0		3.0 - 11.2 - 13.0		3.0 - 13 - 16.0	
COP / SCOP	4.47 / 4.70		4.21 / 4.44		3.90 / 4.60		3.62 / 4.42		3.82 / 4.28		3.76 / 4.29		3.82 / 4.28		3.76 / 4.29	
Energy efficiency class	H		A++		A+		A+		A+		A+		A+		A+	
Airflow	1800 - 500		2200 - 611		2400 - 667		2700 - 750		4080 - 1133		4200 - 1167		4080 - 1133		4200 - 1167	
Sound pressure level	C		46		49		46		48		54		55		55	
Sound power level	C		61		64		63		65		70		70		70	
Operating range	C		-15 / 46		-15 / 46		-15 / 46		-15 / 46		-15 / 46		-15 / 46		-15 / 46	
Sound pressure level	H		47		50		48		52		57		57		57	
Sound power level	H		62		65		65		69		74		74		74	
Operating range	H		-15 / 15		-15 / 15		-15 / 15		-15 / 15		-15 / 15		-15 / 15		-15 / 15	
Dimensions (HxWxD)	mm		550x780x290		550x780x290		550x780x290		890x900x320		890x900x320		890x900x320		890x900x320	
Weight	kg		33		39		40		44		68		68		69	
Compressor type	DC Twin Rotary		DC Twin Rotary		DC Twin Rotary		DC Twin Rotary		DC Twin Rotary		DC Twin Rotary		DC Twin Rotary		DC Twin Rotary	
Flare connections	Gas		in		3/8		1/2		1/2		5/8		5/8		5/8	
Flare connections	Liquid		in		1/4		1/4		1/4		3/8		3/8		3/8	
Minimum pipe length	m		2		2		2		5		5		5		5	
Maximum pipe length	m		20		20		30		30		50		50		50	
Maximum height difference	m		10		10		30		30		30		30		30	
Chargeless pipe length	m		15		15		20		20		30		30		30	
Refrigerant	Type/kg		R32 / 0.6		R32 / 0.9		R32 / 0.9		R32 / 1.3		R32 / 2.1		R32 / 2.1		R32 / 2.1	
Power supply	V-ph-Hz		220/240-1-50. 220-1-60		220/240-1-50. 220-1-60		220/240-1-50		220/240-1-50		220/240-1-50		220/240-1-50		380/415-3-50. 380-3-60	

Combination with compact 4-way cassette up to 1.5HP and standard 4-way cassette from 2 to 5HP

C: cooling mode  
H: heating mode



TOSHIBA Air Conditioning participates in the ECP program for Comfort Air Conditioners (AC). Check ongoing validity of certificate: [www.eurovent-certification.com](http://www.eurovent-certification.com)



**Better Air Solutions**