

TOSHIBA INSTALLATION MANUAL

To Personnel Charged in Installation Work and Service

Wireless remote controller kit

Model: RBC-AX32UM(W)-E

Observe the safety precautions described in the Owner's Manual of the wireless remote controller kit, Installation Manual and Owner's Manual of the Compact 4-way cassette type air conditioner (indoor unit), or the installation manual supplied with the ceiling panel.

Accessories

Part Name	Q'ty	Part Name	Q'ty
Signal receiving unit	1	Owner's Manual	1
Remote controller	1	Installation Manual (this manual)	1
Remote controller holder	1	Tapping screw M4 × 16 mm	2
Battery	2	CD-ROM	1

Confirmation about the signal receiving unit before installation

Before installing the signal receiving unit, confirm the following description.

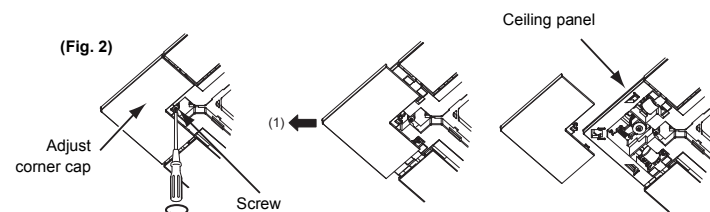
- When using as the group control, always connect the signal receiving unit to the header unit. If it is connected to the follower unit, group control cannot be performed. Before installing the signal receiving unit, check the header unit. Refer to the Installation Manual of the indoor unit or outdoor unit for how to check or set the header unit.
- When the signal receiving unit is removed after it is installed and operated, you have to reinitialize the settings. Set the following code number using the wired remote controller. Refer to the Installation Manual of the indoor unit for the code number setting.

CODE No. (DN)	SET DATA
B5	0000

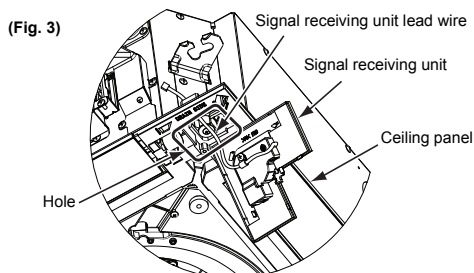
How to install the signal receiving unit

Install the signal receiving unit in correct orientation, since the signal receiving unit can be installed at only one corner as shown in (Fig. 1).

1. Remove the adjust corner cap at the corner where the signal receiving unit is to be installed. (Fig. 2)
- Turn counterclockwise the screw of the suction port corner of the ceiling panel to loosen it.
- Slide the adjust corner cap toward direction of the arrow mark (1) and then remove it.



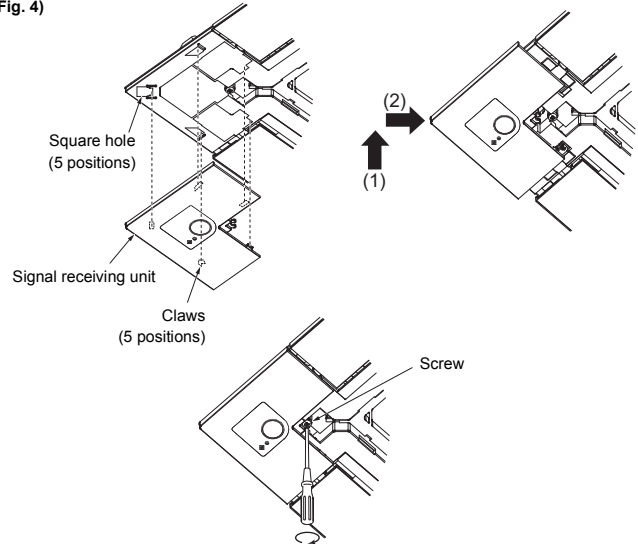
2. Pass the signal receiving unit lead wire through the hole in the ceiling panel. (Fig. 3)



- Thank you for purchasing Wireless remote controller kit for TOSHIBA air conditioners.
 - Read this manual carefully for correct installation of the wireless remote controller kit before starting work.
 - After the installation is completed, execute a test run to check for normal operation and explain how to use and maintain the wireless remote controller kit to the customer according to the Owner's Manual.
- Ask the customer to keep this manual with the Owner's Manual.

3. Attach the signal receiving unit to the ceiling panel and fix it by tightening screw at the ceiling panel corner. (Fig. 4)
- Align the clips on the back of the signal receiving unit with the holes in the corners of the panel and press them into the holes by pressing in direction (1) and sliding the cap in direction (2).
- Take care that the wire is not pinched against the signal receiving unit at this time.

(Fig. 4)

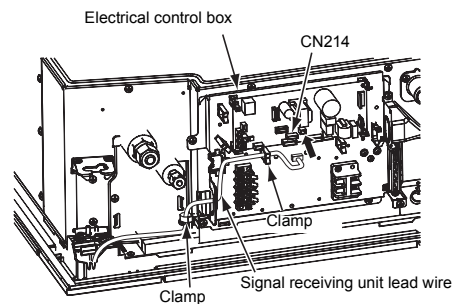


- Check that none of the clips are out of alignment.

How to wire the signal receiving unit

Remove the electrical control box cover and connect the signal receiving unit lead wire to the connector (CN214) on the P.C. board inside the electrical control box.

- The signal receiving unit lead wire is secured to the electrical control box by two clamps.
- Pay attention that the signal receiving unit lead wire is not pinched by the ceiling panel.

**Multiple remote controller installation**

- The control by two remote controllers is enabled by installing the wireless remote controller with the wired remote controller for an indoor unit.
- Up to two wired remote controllers can be connected.
- Connect wired remote controllers according to instructions in the wired remote controller installation instruction manual.

Precaution that the test run method in wireless remote controller differs from other indoor units.

Test run

1. Turn on the power of the air conditioner. When power is turned on for the first time after installation, it takes approx. 5 minutes until the remote controller becomes available. In the case of subsequent power-on, it takes approx. 1 minute until the remote controller becomes available. Execute a test run after the predetermined time has passed.
2. Push "ON/OFF" button on the remote controller, select [Cool] or [Heat] with "MODE" button, and then select [HIGH] with "FAN" button.

Cooling test run	Heating test run
Set the temperature to 17°C with the temp. setup buttons.	Set the temperature to 30°C with the temp. setup buttons.

Cooling test run	Heating test run
After confirming a signal receiving sound "beep" immediately set the temperature to 18°C with the temp. setup buttons.	After confirming a signal receiving sound "beep" immediately set the temperature to 29°C with the temp. setup buttons.

Cooling test run	Heating test run
After confirming a signal receiving sound "beep" immediately set the temperature to 17°C with the temp. setup buttons.	After confirming a signal receiving sound "beep" immediately set the temperature to 30°C with the temp. setup buttons.

6. Repeat procedures 4 → 5 → 4 → 5. Indicators "Operation" (green), "Timer" (green), and "Ready" (orange) in the wireless receiver section flash in approx. 10 seconds, and the air conditioner starts operation. If any of these indicators does not flash, repeat procedures 2 to 5.

7. Upon completion of the test run, push "ON/OFF" button to stop operation.

<Overview of test run operations using the wireless remote controller>

▼ Cooling test run:

ON/OFF → 17°C → 18°C → 17°C → 18°C → 17°C →
18°C → 17°C → (test run) → ON/OFF

▼ Heating test run:

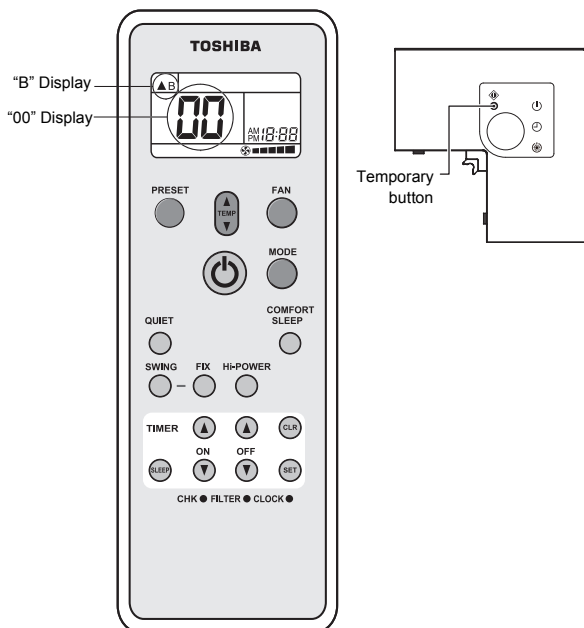
ON/OFF → 30°C → 29°C → 30°C → 29°C → 30°C →
29°C → 30°C → (test run) → ON/OFF

Wireless remote controller A-B selection

Using 2 wireless remote controllers for the respective air conditioners, when the 2 air conditioners are closely installed.

Wireless remote controller B setup

1. Push the START/STOP button to operate the air conditioner. Push it again to stop the air conditioner.
2. Push [Temporary] button on the signal receiving unit to operate the air conditioner.
3. Point the wireless remote controller at the indoor unit.
4. Push and hold **CHK** button on the wireless remote controller by the tip of the pencil. "00" will be shown on the display.
5. Push the MODE button during pushing **CHK**. "B" will be shown on the display and "00" will be disappear and the air conditioner will turn OFF. The wireless remote controller B is memorized.



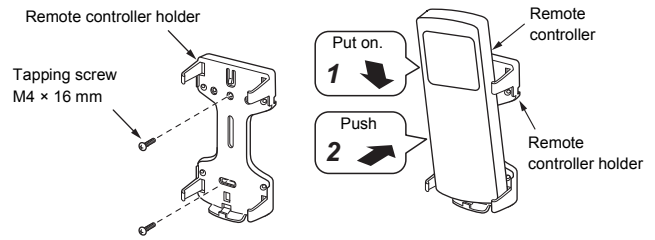
Note:

- Repeat above step to reset wireless remote controller to be A.
- The wireless remote controllers do not display "A".
- The factory default of the wireless remote controllers is "A".

How to handle the remote controller

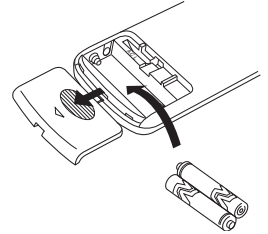
• To set the remote controller on the wall

Push button at the installation position on the wall to check that the signal from the remote controller is received correctly.



• Loading Batteries

1. Remove the battery cover.
2. Insert 2 new batteries (R03 [AAA]) following the (+) and (-) positions.



Self-diagnosis function and measures

• The following table shows a few examples. For details of indoor unit errors, refer to the Installation Manual of the indoor unit.

LED	Possible cause	Measures
	- Power is not turned on. - Incorrect connection between signal receiving unit and indoor unit	Check connections and reconnect wires correctly, if necessary.
	Loose connection between signal receiving unit and indoor unit	
	Incorrect or loose connection between indoor unit and outdoor unit	
	The protective device of the outdoor unit is activated.	Check the outdoor unit.
	The protective device of the indoor unit is activated.	Check the indoor unit.

LEDs on the signal receiving unit ●: OFF : Blinking (at intervals of 0.5 seconds)
LED color : Green : Orange

Notes on installing remote controller

- When using a wireless remote controller in the remote controller holder on a wall, turn on a fluorescent light and operate the remote controller at the installation position. Make sure that the air conditioner operates normally and then secure the remote controller holder on the wall.
- When installing a remote controller that senses room temperature with the sensor, avoid the following places.
 - A place exposed to direct cool air, warm air or direct sunlight
 - A place subject to thermal effects

Explanation to the customer

- After the installation work has been completed, execute a test run to check for normal operation and then hand the customer the Owner's Manual and Installation Manual of the wireless remote controller kit.
- Explain how to use and maintain the wireless remote controller kit to the customer according to the Owner's Manual of the wireless remote controller kit.