



Paul Horsley Acoustics Ltd
Acoustics & Noise Control Consultancy

CLIENT Toshiba Air Conditioning (UK) Ltd

DATE 15/10/2014

DETERMINATION OF INDUCT SOUND POWER LEVEL IN ACCORDANCE WITH BS EN ISO 5136:2009

DATA SHEET No	Model Reference	UNIT SETTINGS	LOCATION
J2303-0031	MMD-AP0076BH-E	Standard /Low	Fresh Air Intake
J2303-0032	MMD-AP0076BH-E	Standard /Medium	Fresh Air Intake
J2303-0033	MMD-AP0076BH-E	Standard /High	Fresh Air Intake
J2303-0034	MMD-AP0076BH-E	Standard /Low	Supply Air
J2303-0035	MMD-AP0076BH-E	Standard /Medium	Supply Air
J2303-0036	MMD-AP0076BH-E	Standard /High	Supply Air
J2303-0037	MMD-AP0096BH-E	Standard /Low	Fresh Air Intake
J2303-0038	MMD-AP0096BH-E	Standard /Medium	Fresh Air Intake
J2303-0039	MMD-AP0096BH-E	Standard /High	Fresh Air Intake
J2303-0040	MMD-AP0096BH-E	Standard /Low	Supply Air
J2303-0041	MMD-AP0096BH-E	Standard /Medium	Supply Air
J2303-0042	MMD-AP0096BH-E	Standard /High	Supply Air
J2303-0043	MMD-AP0156BH-E	Standard /Low	Fresh Air Intake
J2303-0044	MMD-AP0156BH-E	Standard /Medium	Fresh Air Intake
J2303-0045	MMD-AP0156BH-E	Standard /High	Fresh Air Intake
J2303-0046	MMD-AP0156BH-E	Standard /Low	Supply Air
J2303-0047	MMD-AP0156BH-E	Standard /Medium	Supply Air
J2303-0048	MMD-AP0156BH-E	Standard /High	Supply Air
J2303-0049	MMD-AP0186BH-E	Standard /Low	Fresh Air Intake
J2303-0050	MMD-AP0186BH-E	Standard /Medium	Fresh Air Intake
J2303-0051	MMD-AP0186BH-E	Standard /High	Fresh Air Intake
J2303-0052	MMD-AP0186BH-E	Standard /Low	Supply Air
J2303-0053	MMD-AP0186BH-E	Standard /Medium	Supply Air
J2303-0054	MMD-AP0186BH-E	Standard /High	Supply Air
J2303-0055	MMD-AP0246BH-E	Standard /Low	Fresh Air Intake
J2303-0056	MMD-AP0246BH-E	Standard /Medium	Fresh Air Intake
J2303-0057	MMD-AP0246BH-E	Standard /High	Fresh Air Intake
J2303-0058	MMD-AP0246BH-E	Standard /Low	Supply Air
J2303-0059	MMD-AP0246BH-E	Standard /Medium	Supply Air
J2303-0060	MMD-AP0246BH-E	Standard /High	Supply Air
J2303-0061	MMD-AP0306BH-E	Standard /Low	Fresh Air Intake
J2303-0062	MMD-AP0306BH-E	Standard /Medium	Fresh Air Intake
J2303-0063	MMD-AP0306BH-E	Standard /High	Fresh Air Intake



CLIENT Toshiba Air Conditioning (UK) Ltd

DATE 15/10/2014

DETERMINATION OF INDUCT SOUND POWER LEVEL IN ACCORDANCE WITH BS EN ISO 5136:2009

DATA SHEET No	Model Reference	UNIT SETTINGS	LOCATION
J2303-0064	MMD-AP0306BH-E	Standard /Low	Supply Air
J2303-0065	MMD-AP0306BH-E	Standard /Medium	Supply Air
J2303-0066	MMD-AP0306BH-E	Standard /High	Supply Air
J2303-0067	MMD-AP00366BH-E	Standard /Low	Fresh Air Intake
J2303-0068	MMD-AP00366BH-E	Standard /Medium	Fresh Air Intake
J2303-0069	MMD-AP00366BH-E	Standard /High	Fresh Air Intake
J2303-0070	MMD-AP00366BH-E	Standard /Low	Supply Air
J2303-0071	MMD-AP00366BH-E	Standard /Medium	Supply Air
J2303-0072	MMD-AP00366BH-E	Standard /High	Supply Air
J2303-0073	MMD-AP0486BH-E	Standard /Low	Fresh Air Intake
J2303-0074	MMD-AP0486BH-E	Standard /Medium	Fresh Air Intake
J2303-0075	MMD-AP0486BH-E	Standard /High	Fresh Air Intake
J2303-0076	MMD-AP0486BH-E	Standard /Low	Supply Air
J2303-0077	MMD-AP0486BH-E	Standard /Medium	Supply Air
J2303-0078	MMD-AP0486BH-E	Standard /High	Supply Air
J2303-0079	MMD-AP0566BH-E	Standard /Low	Fresh Air Intake
J2303-0080	MMD-AP0566BH-E	Standard /Medium	Fresh Air Intake
J2303-0081	MMD-AP0566BH-E	Standard /High	Fresh Air Intake
J2303-0082	MMD-AP0566BH-E	Standard /Low	Supply Air
J2303-0083	MMD-AP0566BH-E	Standard /Medium	Supply Air
J2303-0084	MMD-AP0566BH-E	Standard /High	Supply Air



Paul Horsley Acoustics Ltd
Acoustics & Noise Control Consultancy

CLIENT Toshiba Air Conditioning (UK) Ltd

DATE 13/10/2014

DATA SHEET No J2303-0031

DETERMINATION OF INDUCT SOUND POWER LEVEL IN ACCORDANCE WITH BS EN ISO 5136:2009

Model Reference Toshiba MMD-AP0076BH-E **UNIT SETTINGS** Standard / Low

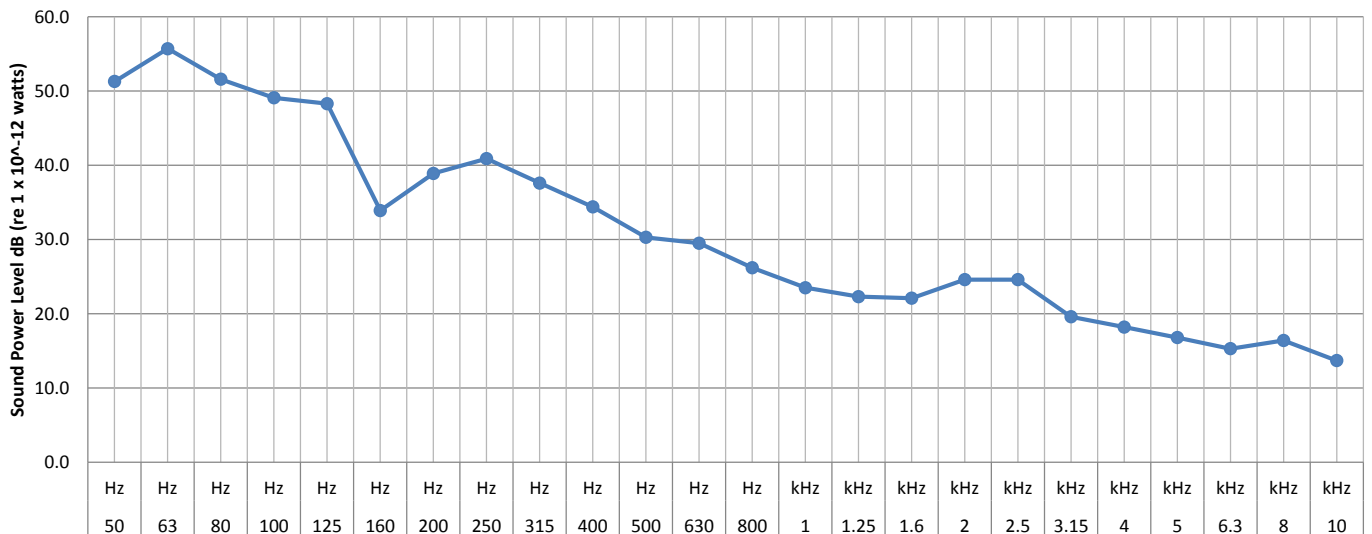
Specific Parameters

Standard Air Volume 330 cu.m/hr
Standard Operating Pressure 30 Pa

INDUCT SOUND POWER LEVEL - FRESH AIR INTAKE

Frequency	50	63	80	100	125	160	200	250	315	400	500	630	800	1	1.3	1.6	2	2.5	3.2	4	5	6.3	8	10	
	Hz	Hz	Hz	Hz	Hz	Hz	Hz	Hz	Hz	Hz	Hz	Hz	Hz	kHz	kHz	kHz	kHz	kHz	kHz	kHz	kHz	kHz	kHz	kHz	
Lw (1/3) dB	51.3	55.7	51.6	49.1	48.3	33.9	38.9	40.9	37.6	34.4	30.3	29.5	26.2	23.5	22.3	22.1	24.6	24.6	19.6	18.2	16.8	15.3	16.4	13.7	
Induct Lw dB		58.1			51.8			44.1			36.7			29.1			28.7			23.1			20.0		
LW Total	59.2 dB (re 1 x 10 ⁻¹² watts)																								
LW (A) Total	41.2 dB																								

Sound Power Level, Lw dB



Data Sheet Produced By

Paul Horsley MIOA
Paul Horsley Acoustics Ltd
1 Upper Lane, Gomersal, BD19 4JD
Tel - 01274 879 020

Signed

Date

13.10.14



Paul Horsley Acoustics Ltd
Acoustics & Noise Control Consultancy

CLIENT Toshiba Air Conditioning (UK) Ltd

DATE 13/10/2014

DATA SHEET No J2303-0032

DETERMINATION OF INDUCT SOUND POWER LEVEL IN ACCORDANCE WITH BS EN ISO 5136:2009

Model Reference Toshiba MMD-AP0076BH-E **UNIT SETTINGS** Standard / Medium

Specific Parameters

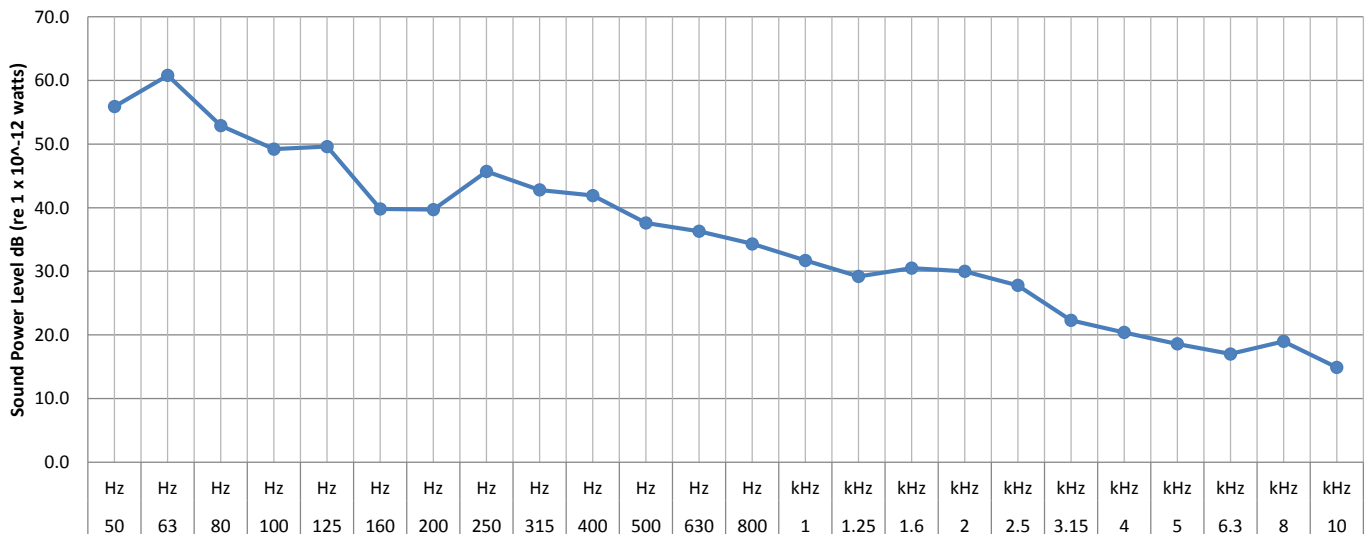
Standard Air Volume 420 cu.m/hr

Standard Operating Pressure 30 Pa

INDUCT SOUND POWER LEVEL - FRESH AIR INTAKE

Frequency	50	63	80	100	125	160	200	250	315	400	500	630	800	1	1.3	1.6	2	2.5	3.2	4	5	6.3	8	10	
	Hz	Hz	Hz	Hz	Hz	Hz	Hz	Hz	Hz	Hz	Hz	Hz	Hz	kHz	kHz	kHz	kHz	kHz	kHz	kHz	kHz	kHz	kHz	kHz	
Lw (1/3) dB	55.9	60.8	52.9	49.2	49.6	39.8	39.7	45.7	42.8	41.9	37.6	36.3	34.3	31.7	29.2	30.5	30.0	27.8	22.3	20.4	18.6	17.0	19.0	14.9	
Induct Lw dB		62.5			52.6			48.2			44.1			37.0			34.4			25.5			22.1		
LW Total	63.1 dB (re 1 x 10 ⁻¹² watts)																								
LW (A) Total	45.9 dB																								

Sound Power Level, Lw dB



Data Sheet Produced By

Paul Horsley MIOA
Paul Horsley Acoustics Ltd
1 Upper Lane, Gomersal, BD19 4JD
Tel - 01274 879 020

Signed

Date

13.10.14



Paul Horsley Acoustics Ltd
Acoustics & Noise Control Consultancy

CLIENT Toshiba Air Conditioning (UK) Ltd

DATE 13/10/2014

DATA SHEET No J2303-0033

DETERMINATION OF INDUCT SOUND POWER LEVEL IN ACCORDANCE WITH BS EN ISO 5136:2009

Model Reference Toshiba MMD-AP0076BH-E **UNIT SETTINGS** Standard / High

Specific Parameters

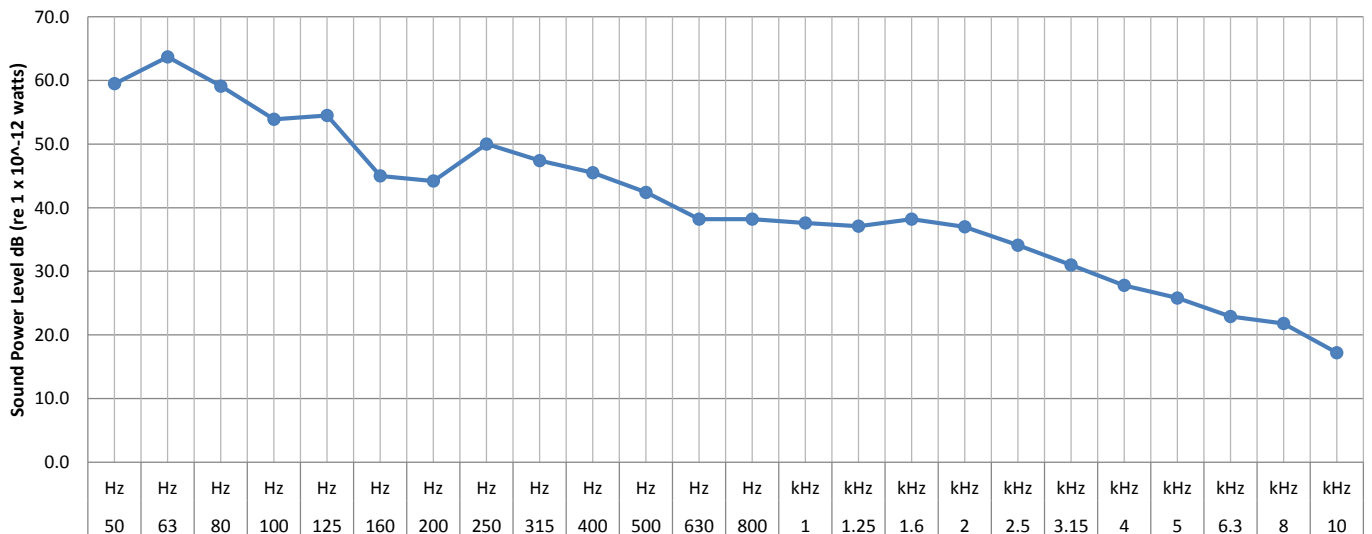
Standard Air Volume 540 cu.m/hr

Standard Operating Pressure 30 Pa

INDUCT SOUND POWER LEVEL - FRESH AIR INTAKE

Frequency	50	63	80	100	125	160	200	250	315	400	500	630	800	1	1.3	1.6	2	2.5	3.2	4	5	6.3	8	10	
	Hz	Hz	Hz	Hz	Hz	Hz	Hz	Hz	Hz	Hz	Hz	Hz	Hz	kHz	kHz	kHz	kHz	kHz	kHz	kHz	kHz	kHz	kHz	kHz	
Lw (1/3) dB	59.5	63.7	59.1	53.9	54.5	45.0	44.2	50.0	47.4	45.5	42.4	38.2	38.2	37.6	37.1	38.2	37.0	34.1	31.0	27.8	25.8	22.9	21.8	17.2	
Induct Lw dB		66.1			57.5			52.6			47.7			42.4			41.5			33.5			26.0		
LW Total	66.9 dB (re 1 x 10 ⁻¹² watts)																								
LW (A) Total	50.6 dB																								

Sound Power Level, Lw dB



Data Sheet Produced By

Paul Horsley MIOA
Paul Horsley Acoustics Ltd
1 Upper Lane, Gomersal, BD19 4JD
Tel - 01274 879 020

Signed

Date

13.10.14



Paul Horsley Acoustics Ltd
Acoustics & Noise Control Consultancy

CLIENT Toshiba Air Conditioning (UK) Ltd

DATE 13/10/2014

DATA SHEET No J2303-0034

DETERMINATION OF INDUCT SOUND POWER LEVEL IN ACCORDANCE WITH BS EN ISO 5136:2009

Model Reference Toshiba MMD-AP0076BH-E **UNIT SETTINGS** Standard / Low

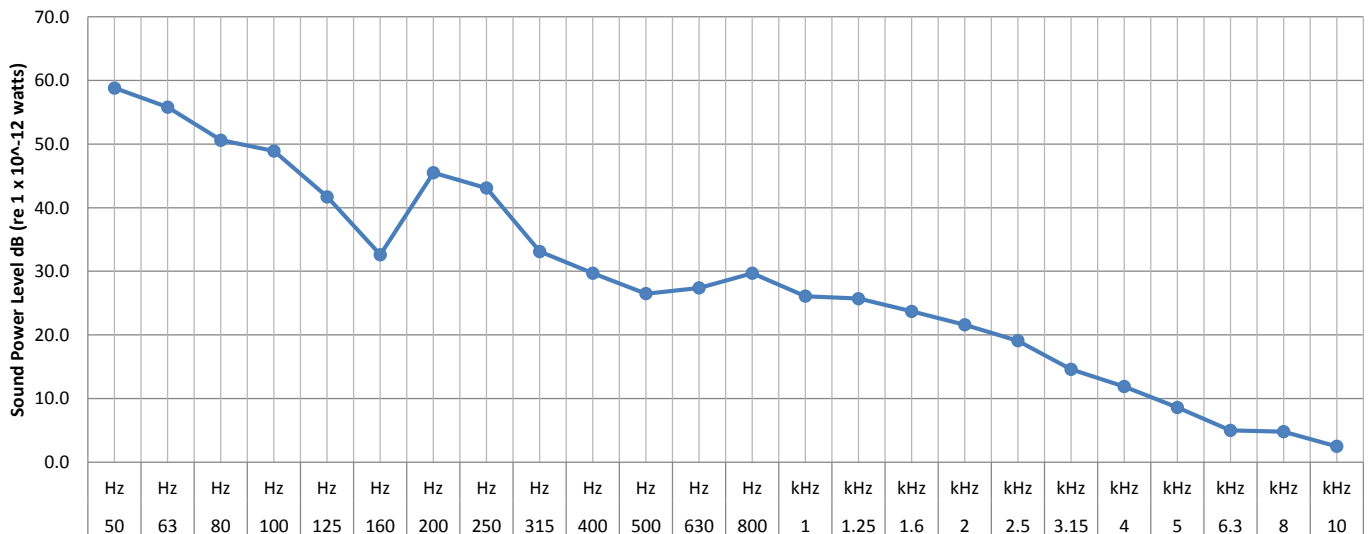
Specific Parameters

Standard Air Volume 330 cu.m/hr
Standard Operating Pressure 30 Pa

INDUCT SOUND POWER LEVEL - SUPPLY AIR

Frequency	50	63	80	100	125	160	200	250	315	400	500	630	800	1	1.3	1.6	2	2.5	3.2	4	5	6.3	8	10	
	Hz	Hz	Hz	Hz	Hz	Hz	Hz	Hz	Hz	Hz	Hz	Hz	Hz	kHz	kHz	kHz	kHz	kHz	kHz	kHz	kHz	kHz	kHz	kHz	
Lw (1/3) dB	58.8	55.8	50.6	48.9	41.7	32.6	45.5	43.1	33.1	29.7	26.5	27.4	29.7	26.1	25.7	23.7	21.6	19.1	14.6	11.9	8.6	5.0	4.8	2.5	
Induct Lw dB		61.0			49.7			47.6			32.9			32.3			26.6			17.1			9.0		
LW Total	61.5 dB (re 1 x 10 ⁻¹² watts)																								
LW (A) Total	42.1 dB																								

Sound Power Level, Lw dB



Data Sheet Produced By

Paul Horsley MIOA
Paul Horsley Acoustics Ltd
1 Upper Lane, Gomersal, BD19 4JD
Tel - 01274 879 020

Signed

Date

13.10.14



Paul Horsley Acoustics Ltd
Acoustics & Noise Control Consultancy

CLIENT Toshiba Air Conditioning (UK) Ltd

DATE 13/10/2014

DATA SHEET No J2303-0035

DETERMINATION OF INDUCT SOUND POWER LEVEL IN ACCORDANCE WITH BS EN ISO 5136:2009

Model Reference Toshiba MMD-AP0076BH-E **UNIT SETTINGS** Standard / Medium

Specific Parameters

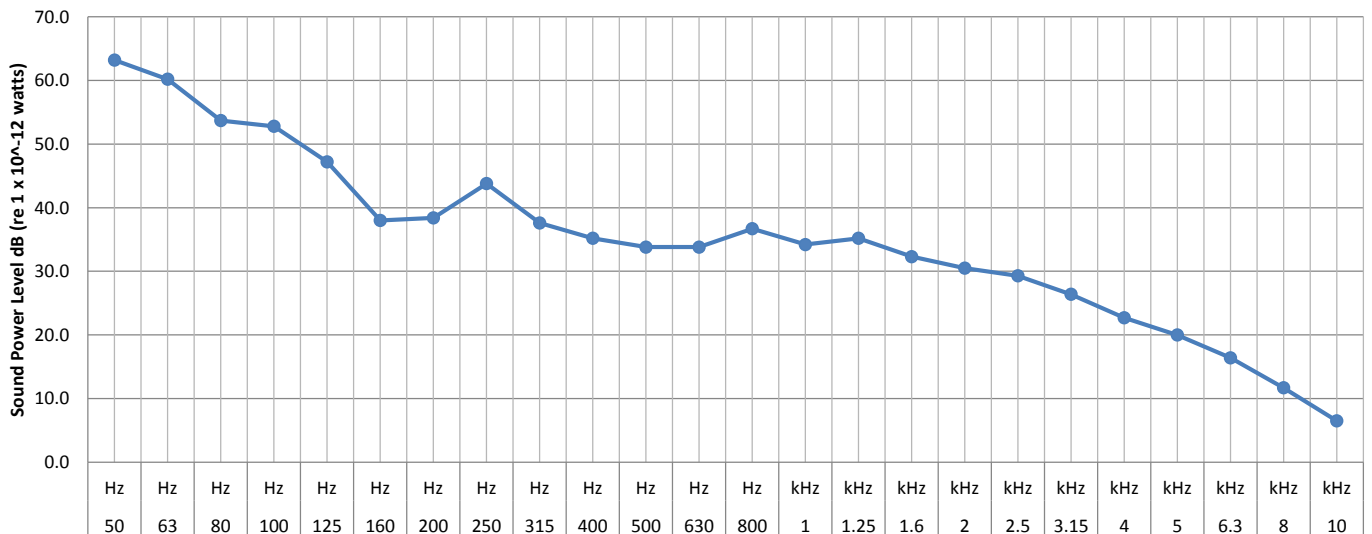
Standard Air Volume 420 cu.m/hr

Standard Operating Pressure 30 Pa

INDUCT SOUND POWER LEVEL - SUPPLY AIR

Frequency	50	63	80	100	125	160	200	250	315	400	500	630	800	1	1.3	1.6	2	2.5	3.2	4	5	6.3	8	10	
	Hz	Hz	Hz	Hz	Hz	Hz	Hz	Hz	Hz	Hz	Hz	Hz	Hz	kHz	kHz	kHz	kHz	kHz	kHz	kHz	kHz	kHz	kHz	kHz	
Lw (1/3) dB	63.2	60.2	53.7	52.8	47.2	38.0	38.4	43.8	37.6	35.2	33.8	33.8	36.7	34.2	35.2	32.3	30.5	29.3	26.4	22.7	20.0	16.4	11.7	6.5	
Induct Lw dB		65.3			54.0			45.6			39.1			40.3			35.6			28.6			18.0		
LW Total	65.7 dB (re 1 x 10 ⁻¹² watts)																								
LW (A) Total	46.0 dB																								

Sound Power Level, Lw dB



Data Sheet Produced By

Paul Horsley MIOA
Paul Horsley Acoustics Ltd
1 Upper Lane, Gomersal, BD19 4JD
Tel - 01274 879 020

Signed

Date

13.10.14



Paul Horsley Acoustics Ltd
Acoustics & Noise Control Consultancy

CLIENT Toshiba Air Conditioning (UK) Ltd

DATE 13/10/2014

DATA SHEET No J2303-0036

DETERMINATION OF INDUCT SOUND POWER LEVEL IN ACCORDANCE WITH BS EN ISO 5136:2009

Model Reference Toshiba MMD-AP0076BH-E **UNIT SETTINGS** Standard / High

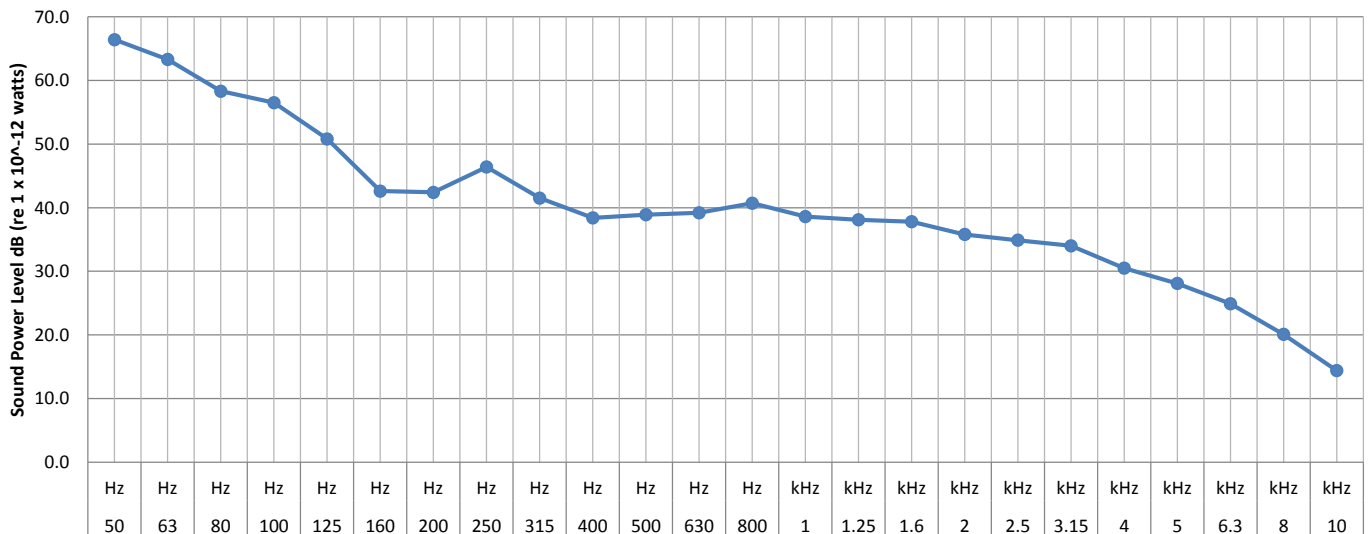
Specific Parameters

Standard Air Volume 540 cu.m/hr
Standard Operating Pressure 30 Pa

INDUCT SOUND POWER LEVEL - SUPPLY AIR

Frequency	50	63	80	100	125	160	200	250	315	400	500	630	800	1	1.3	1.6	2	2.5	3.2	4	5	6.3	8	10	
	Hz	Hz	Hz	Hz	Hz	Hz	Hz	Hz	Hz	Hz	Hz	Hz	Hz	kHz	kHz	kHz	kHz	kHz	kHz	kHz	kHz	kHz	kHz	kHz	
Lw (1/3) dB	66.4	63.3	58.3	56.5	50.8	42.6	42.4	46.4	41.5	38.4	38.9	39.2	40.7	38.6	38.1	37.8	35.8	34.9	34.0	30.5	28.1	24.9	20.1	14.4	
Induct Lw dB		68.6			57.7			48.8			43.6			44.1			41.1			36.3			26.4		
LW Total	69.0 dB (re 1 x 10 ⁻¹² watts)																								
LW (A) Total	50.1 dB																								

Sound Power Level, Lw dB



Data Sheet Produced By

Paul Horsley MIOA
Paul Horsley Acoustics Ltd
1 Upper Lane, Gomersal, BD19 4JD
Tel - 01274 879 020

Signed

Date

13.10.14



Paul Horsley Acoustics Ltd
Acoustics & Noise Control Consultancy

CLIENT Toshiba Air Conditioning (UK) Ltd

DATE 13/10/2014

DATA SHEET No J2303-0037

DETERMINATION OF INDUCT SOUND POWER LEVEL IN ACCORDANCE WITH BS EN ISO 5136:2009

Model Reference Toshiba MMD-AP0096BH-E **UNIT SETTINGS** Standard / Low

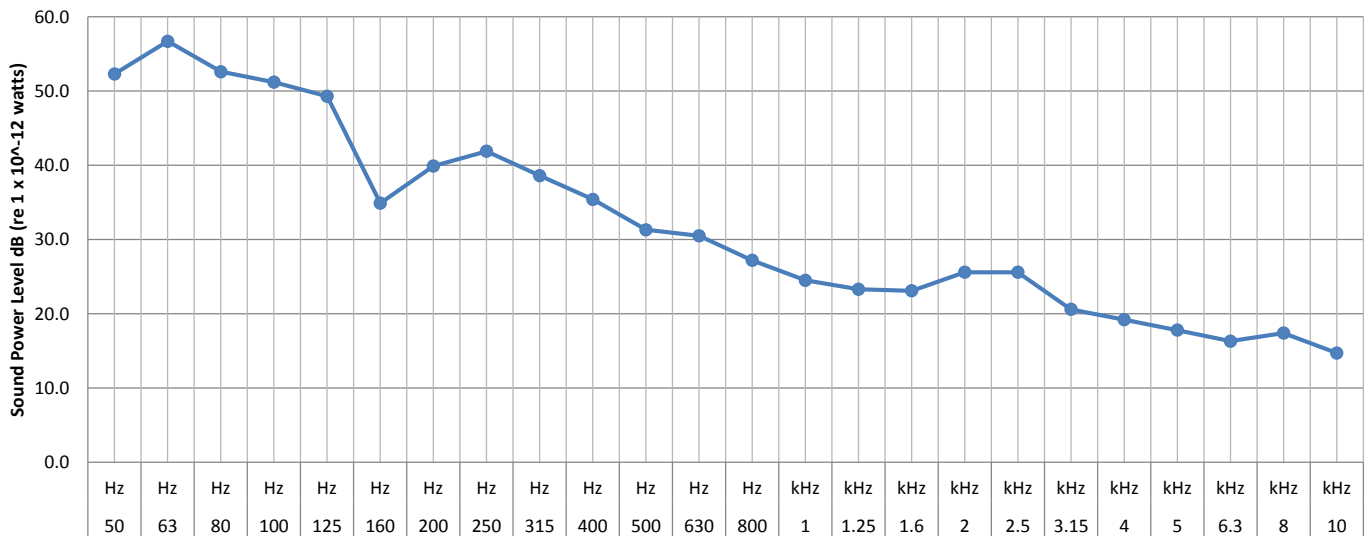
Specific Parameters

Standard Air Volume 330 cu.m/hr
Standard Operating Pressure 30 Pa

INDUCT SOUND POWER LEVEL - FRESH AIR INTAKE

Frequency	50	63	80	100	125	160	200	250	315	400	500	630	800	1	1.3	1.6	2	2.5	3.2	4	5	6.3	8	10	
	Hz	Hz	Hz	Hz	Hz	Hz	Hz	Hz	Hz	Hz	Hz	Hz	Hz	kHz	kHz	kHz	kHz	kHz	kHz	kHz	kHz	kHz	kHz	kHz	
Lw (1/3) dB	52.3	56.7	52.6	51.2	49.3	34.9	39.9	41.9	38.6	35.4	31.3	30.5	27.2	24.5	23.3	23.1	25.6	25.6	20.6	19.2	17.8	16.3	17.4	14.7	
Induct Lw dB		59.1			53.4			45.1			37.7			30.1			29.7			24.1			21.0		
LW Total	60.3 dB (re 1 x 10 ⁻¹² watts)																								
LW (A) Total	42.4 dB																								

Sound Power Level, Lw dB



Data Sheet Produced By

Paul Horsley MIOA
Paul Horsley Acoustics Ltd
1 Upper Lane, Gomersal, BD19 4JD
Tel - 01274 879 020

Signed

Date

13.10.14



Paul Horsley Acoustics Ltd
Acoustics & Noise Control Consultancy

CLIENT Toshiba Air Conditioning (UK) Ltd

DATE 13/10/2014

DATA SHEET No J2303-0038

DETERMINATION OF INDUCT SOUND POWER LEVEL IN ACCORDANCE WITH BS EN ISO 5136:2009

Model Reference Toshiba MMD-AP0096BH-E **UNIT SETTINGS** Standard / Medium

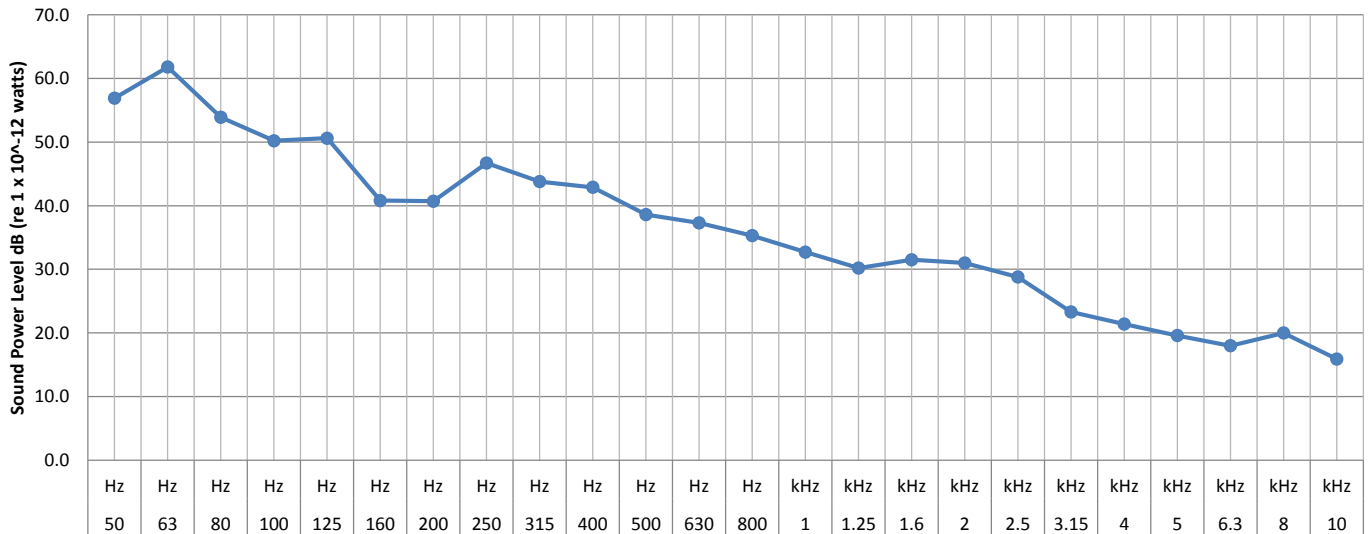
Specific Parameters

Standard Air Volume 450 cu.m/hr
Standard Operating Pressure 30 Pa

INDUCT SOUND POWER LEVEL - FRESH AIR INTAKE

Frequency	50	63	80	100	125	160	200	250	315	400	500	630	800	1	1.3	1.6	2	2.5	3.2	4	5	6.3	8	10		
	Hz	Hz	Hz	Hz	Hz	Hz	Hz	Hz	Hz	Hz	Hz	Hz	Hz	kHz	kHz	kHz	kHz	kHz	kHz	kHz	kHz	kHz	kHz	kHz		
Lw (1/3) dB	56.9	61.8	53.9	50.2	50.6	40.8	40.7	46.7	43.8	42.9	38.6	37.3	35.3	32.7	30.2	31.5	31.0	28.8	23.3	21.4	19.6	18.0	20.0	15.9		
Induct Lw dB		63.5			53.6			49.2			45.1			38.0			35.4			26.5			23.1			
LW Total	64.1 dB (re 1 x 10 ⁻¹² watts)																									
LW (A) Total	46.9 dB																									

Sound Power Level, Lw dB



Data Sheet Produced By

Paul Horsley MIOA
Paul Horsley Acoustics Ltd
1 Upper Lane, Gomersal, BD19 4JD
Tel - 01274 879 020

Signed

Date

13.10.14



Paul Horsley Acoustics Ltd
Acoustics & Noise Control Consultancy

CLIENT Toshiba Air Conditioning (UK) Ltd

DATE 13/10/2014

DATA SHEET No J2303-0039

DETERMINATION OF INDUCT SOUND POWER LEVEL IN ACCORDANCE WITH BS EN ISO 5136:2009

Model Reference Toshiba MMD-AP0076BH-E **UNIT SETTINGS** Standard / High

Specific Parameters

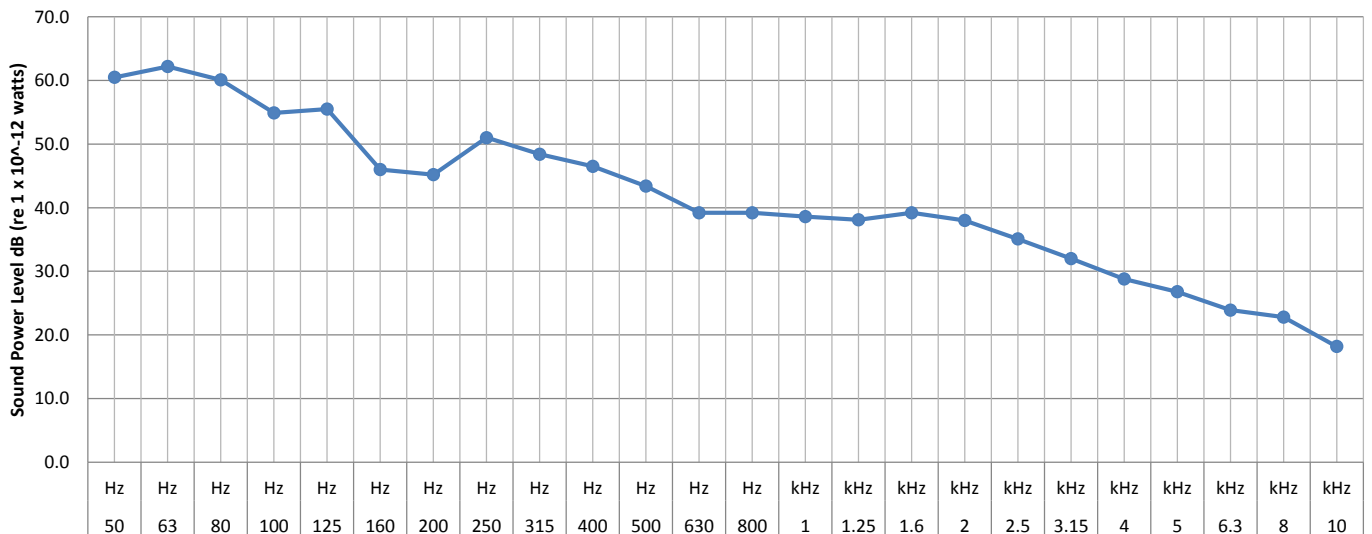
Standard Air Volume 570 cu.m/hr

Standard Operating Pressure 30 Pa

INDUCT SOUND POWER LEVEL - FRESH AIR INTAKE

Frequency	50	63	80	100	125	160	200	250	315	400	500	630	800	1	1.3	1.6	2	2.5	3.2	4	5	6.3	8	10	
	Hz	Hz	Hz	Hz	Hz	Hz	Hz	Hz	Hz	Hz	Hz	Hz	Hz	kHz	kHz	kHz	kHz	kHz	kHz	kHz	kHz	kHz	kHz	kHz	
Lw (1/3) dB	60.5	62.2	60.1	54.9	55.5	46.0	45.2	51.0	48.4	46.5	43.4	39.2	39.2	38.6	38.1	39.2	38.0	35.1	32.0	28.8	26.8	23.9	22.8	18.2	
Induct Lw dB		65.8			58.5			53.6			48.7			43.4			42.5			34.5			27.0		
LW Total	66.9 dB (re 1 x 10 ⁻¹² watts)																								
LW (A) Total	51.5 dB																								

Sound Power Level, Lw dB



Data Sheet Produced By

Paul Horsley MIOA
Paul Horsley Acoustics Ltd
1 Upper Lane, Gomersal, BD19 4JD
Tel - 01274 879 020

Signed

Date

13.10.14



Paul Horsley Acoustics Ltd
Acoustics & Noise Control Consultancy

CLIENT Toshiba Air Conditioning (UK) Ltd

DATE 13/10/2014

DATA SHEET No J2303-0040

DETERMINATION OF INDUCT SOUND POWER LEVEL IN ACCORDANCE WITH BS EN ISO 5136:2009

Model Reference Toshiba MMD-AP0096BH-E **UNIT SETTINGS** Standard / Low

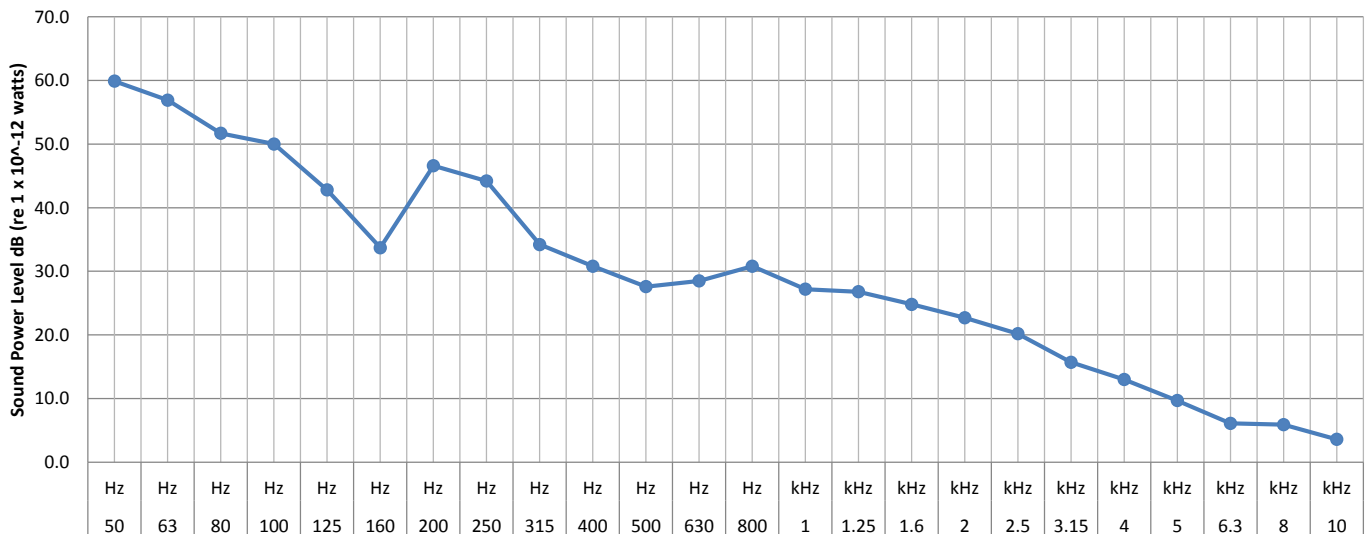
Specific Parameters

Standard Air Volume 330 cu.m/hr
Standard Operating Pressure 30 Pa

INDUCT SOUND POWER LEVEL - SUPPLY AIR

Frequency	50	63	80	100	125	160	200	250	315	400	500	630	800	1	1.3	1.6	2	2.5	3.2	4	5	6.3	8	10		
	Hz	Hz	Hz	Hz	Hz	Hz	Hz	Hz	Hz	Hz	Hz	Hz	Hz	kHz	kHz	kHz	kHz	kHz	kHz	kHz	kHz	kHz	kHz	kHz		
Lw (1/3) dB	59.9	56.9	51.7	50.0	42.8	33.7	46.6	44.2	34.2	30.8	27.6	28.5	30.8	27.2	26.8	24.8	22.7	20.2	15.7	13.0	9.7	6.1	5.9	3.6		
Induct Lw dB		62.1			50.8			48.7			34.0			33.4			27.7			18.2			10.1			
LW Total	62.6 dB (re 1 x 10 ⁻¹² watts)																									
LW (A) Total	43.2 dB																									

Sound Power Level, Lw dB



Data Sheet Produced By

Paul Horsley MIOA
Paul Horsley Acoustics Ltd
1 Upper Lane, Gomersal, BD19 4JD
Tel - 01274 879 020

Signed

Date

13.10.14



Paul Horsley Acoustics Ltd
Acoustics & Noise Control Consultancy

CLIENT Toshiba Air Conditioning (UK) Ltd

DATE 13/10/2014

DATA SHEET No J2303-0042

DETERMINATION OF INDUCT SOUND POWER LEVEL IN ACCORDANCE WITH BS EN ISO 5136:2009

Model Reference Toshiba MMD-AP0096BH-E **UNIT SETTINGS** Standard / High

Specific Parameters

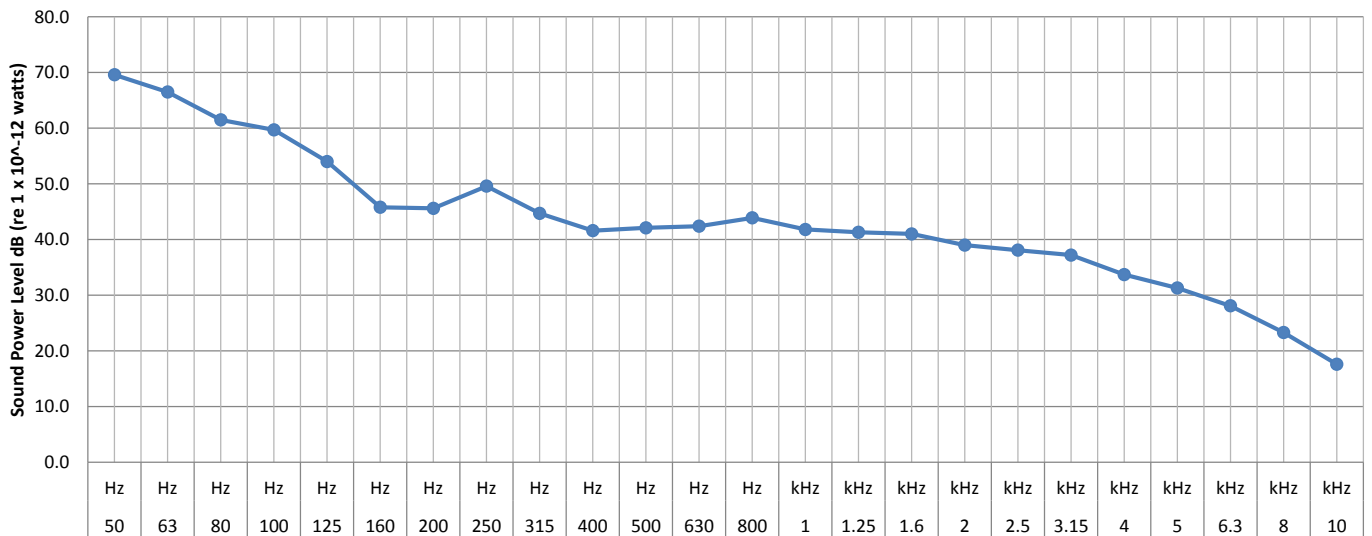
Standard Air Volume 570 cu.m/hr

Standard Operating Pressure 30 Pa

INDUCT SOUND POWER LEVEL - SUPPLY AIR

Frequency	50	63	80	100	125	160	200	250	315	400	500	630	800	1	1.3	1.6	2	2.5	3.2	4	5	6.3	8	10	
	Hz	Hz	Hz	Hz	Hz	Hz	Hz	Hz	Hz	Hz	Hz	Hz	Hz	kHz	kHz	kHz	kHz	kHz	kHz	kHz	kHz	kHz	kHz	kHz	
Lw (1/3) dB	69.6	66.5	61.5	59.7	54.0	45.8	45.6	49.6	44.7	41.6	42.1	42.4	43.9	41.8	41.3	41.0	39.0	38.1	37.2	33.7	31.3	28.1	23.3	17.6	
Induct Lw dB		71.8			60.9			52.0			46.8			47.3			44.3			39.5			29.6		
LW Total	72.2 dB (re 1 x 10 ⁻¹² watts)																								
LW (A) Total	53.3 dB																								

Sound Power Level, Lw dB



Data Sheet Produced By

Paul Horsley MIOA
Paul Horsley Acoustics Ltd
1 Upper Lane, Gomersal, BD19 4JD
Tel - 01274 879 020

Signed

Date

13.10.14

CLIENT Toshiba Air Conditioning (UK) Ltd

DATE 13/10/2014

DATA SHEET No J2303-0043

DETERMINATION OF INDUCT SOUND POWER LEVEL IN ACCORDANCE WITH BS EN ISO 5136:2009

Model Reference Toshiba MMD-AP0156BH-E **UNIT SETTINGS** Standard / Low

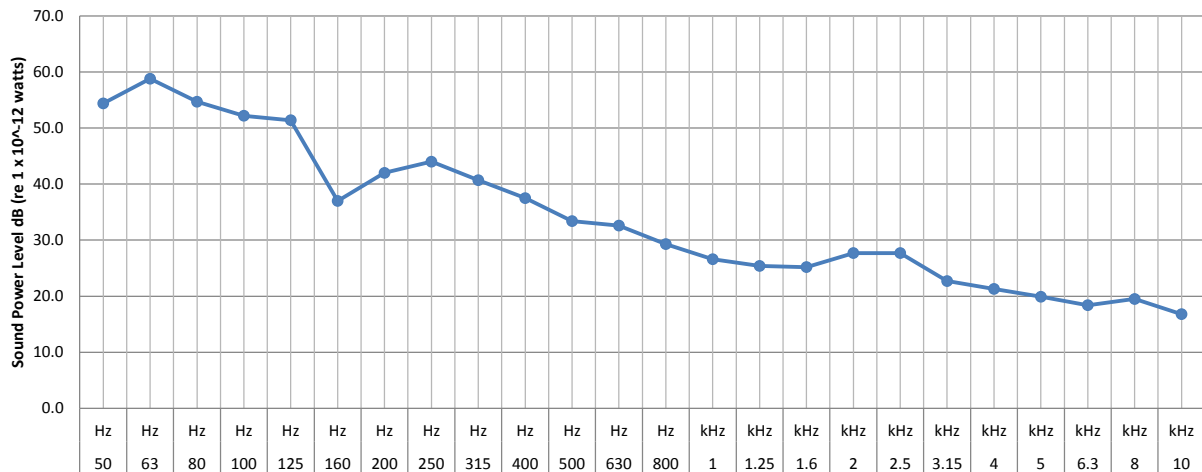
Specific Parameters

Standard Air Volume 480 cu.m/hr
Standard Operating Pressure 30 Pa

INDUCT SOUND POWER LEVEL - FRESH AIR INTAKE

Frequency	50	63	80	100	125	160	200	250	315	400	500	630	800	1	1.3	1.6	2	2.5	3.2	4	5	6.3	8	10
	Hz	Hz	Hz	Hz	Hz	Hz	Hz	Hz	Hz	Hz	Hz	Hz	Hz	kHz	kHz	kHz	kHz	kHz	kHz	kHz	kHz	kHz	kHz	kHz
Lw (1/3) dB	54.4	58.8	54.7	52.2	51.4	37.0	42.0	44.0	40.7	37.5	33.4	32.6	29.3	26.6	25.4	25.2	27.7	27.7	22.7	21.3	19.9	18.4	19.5	16.8
Induct Lw dB		61.2			54.9			47.2			39.8			32.2			31.8			26.2			23.1	
LW Total		62.3 dB (re 1 x 10 ⁻¹² watts)																						
LW (A) Total		44.3	dB																					

Sound Power Level, Lw dB



Data Sheet Produced By

Signed

Date

Paul Horsley MIOA
Paul Horsley Acoustics Ltd
1 Upper Lane, Gomersal, BD19 4JD
Tel - 01274 879 020



13.10.14

CLIENT Toshiba Air Conditioning (UK) Ltd
DATE 13/10/2014
DATA SHEET No J2303-0045

DETERMINATION OF INDUCT SOUND POWER LEVEL IN ACCORDANCE WITH BS EN ISO 5136:2009

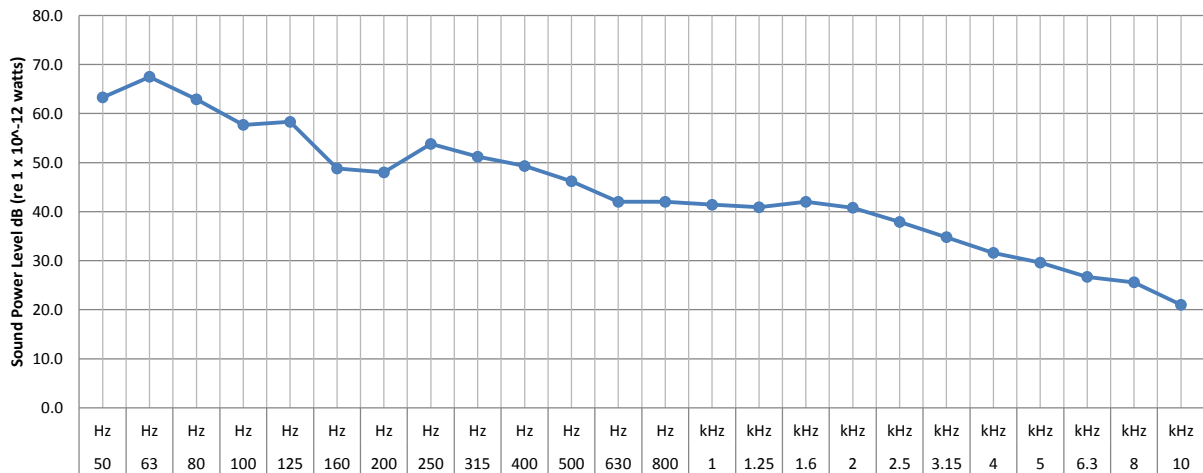
Model Reference Toshiba MMD-AP0156BH-E **UNIT SETTINGS** Standard / High

Specific Parameters
 Standard Air Volume 800 cu.m/hr
 Standard Operating Pressure 30 Pa

INDUCT SOUND POWER LEVEL - FRESH AIR INTAKE

Frequency	50	63	80	100	125	160	200	250	315	400	500	630	800	1	1.3	1.6	2	2.5	3.2	4	5	6.3	8	10
	Hz	Hz	Hz	Hz	Hz	Hz	Hz	Hz	Hz	Hz	Hz	Hz	Hz	Hz	kHz	kHz	kHz	kHz	kHz	kHz	kHz	kHz	kHz	kHz
Lw (1/3) dB	63.3	67.5	62.9	57.7	58.3	48.8	48.0	53.8	51.2	49.3	46.2	42.0	42.0	41.4	40.9	42.0	40.8	37.9	34.8	31.6	29.6	26.7	25.6	21.0
Induct Lw dB		69.9			61.3			56.4			51.5			46.2			45.3			37.3				29.8
LW Total			70.7	dB (re 1 x 10 ⁻¹² watts)																				
LW (A) Total		54.4	dB																					

Sound Power Level, Lw dB



Data Sheet Produced By

Paul Horsley MIOA
 Paul Horsley Acoustics Ltd
 1 Upper Lane, Gomersal, BD19 4JD
 Tel - 01274 879 020

Signed



Date

13.10.14

CLIENT Toshiba Air Conditioning (UK) Ltd
DATE 13/10/2014
DATA SHEET No J2303-0048

DETERMINATION OF INDUCT SOUND POWER LEVEL IN ACCORDANCE WITH BS EN ISO 5136:2009

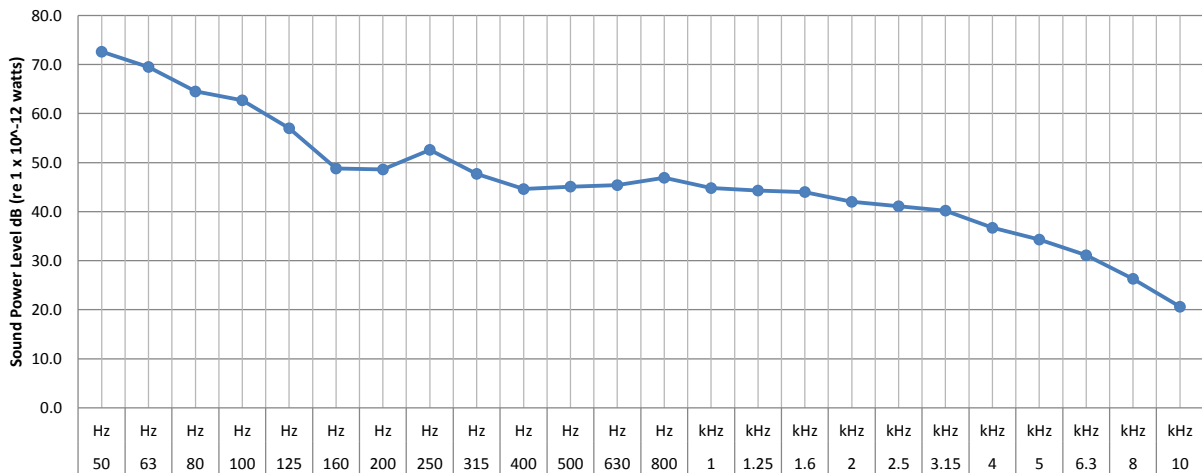
Model Reference Toshiba MMD-AP0156BH-E **UNIT SETTINGS** Standard / High

Specific Parameters
 Standard Air Volume 800 cu.m/hr
 Standard Operating Pressure 30 Pa

INDUCT SOUND POWER LEVEL - SUPPLY AIR

Frequency	50	63	80	100	125	160	200	250	315	400	500	630	800	1	1.3	1.6	2	2.5	3.2	4	5	6.3	8	10		
	Hz	Hz	Hz	Hz	Hz	Hz	Hz	Hz	Hz	Hz	Hz	Hz	Hz	Hz	kHz	kHz	kHz	kHz	kHz	kHz	kHz	kHz	kHz	kHz	kHz	
Lw (1/3) dB	72.6	69.5	64.5	62.7	57.0	48.8	48.6	52.6	47.7	44.6	45.1	45.4	46.9	44.8	44.3	44.0	42.0	41.1	40.2	36.7	34.3	31.1	26.3	20.6		
Induct Lw dB		74.8			63.9			55.0			49.8			50.3			47.3			42.5				32.6		
LW Total			75.2	dB (re 1 x 10 ⁻¹² watts)																						
LW (A) Total		56.3	dB																							

Sound Power Level, Lw dB



Data Sheet Produced By

Paul Horsley MIOA
 Paul Horsley Acoustics Ltd
 1 Upper Lane, Gomersal, BD19 4JD
 Tel - 01274 879 020

Signed



Date

13.10.14



Paul Horsley Acoustics Ltd
Acoustics & Noise Control Consultancy

CLIENT Toshiba Air Conditioning (UK) Ltd

DATE 08/10/2014

DATA SHEET No J2303-0049

DETERMINATION OF INDUCT SOUND POWER LEVEL IN ACCORDANCE WITH BS EN ISO 5136:2009

Model Reference Toshiba MMD-AP00186BH-E **UNIT SETTINGS** Standard / Low

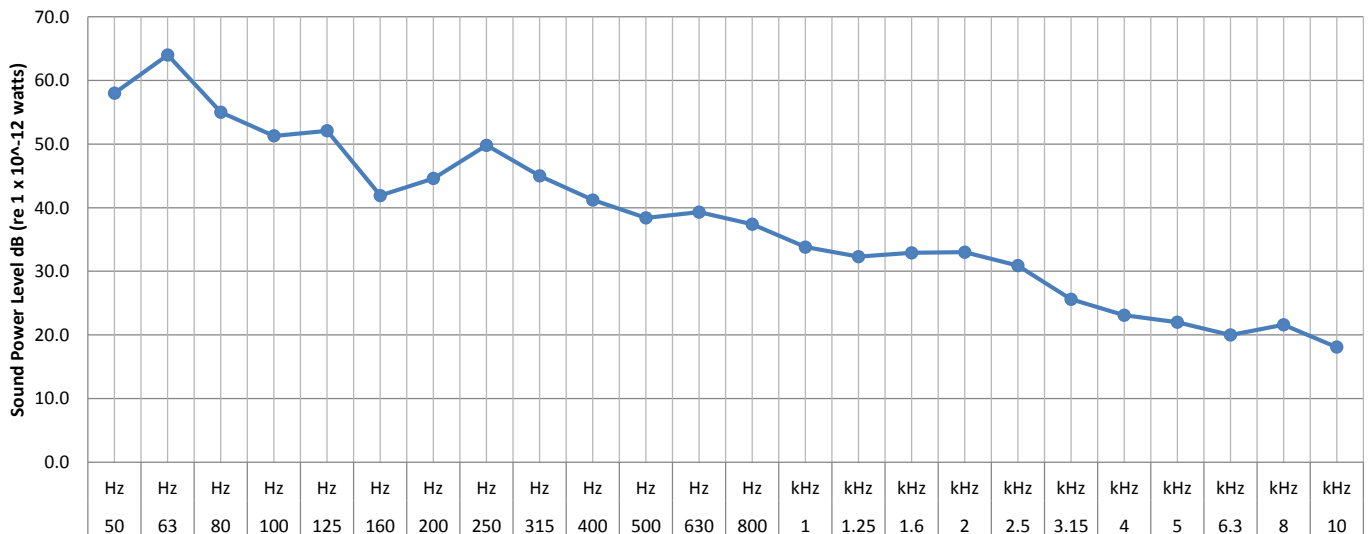
Specific Parameters

Standard Air Volume 480 cu.m/hr
Standard Operating Pressure 30 Pa

INDUCT SOUND POWER LEVEL - FRESH AIR INTAKE

Frequency	50	63	80	100	125	160	200	250	315	400	500	630	800	1	1.3	1.6	2	2.5	3.2	4	5	6.3	8	10	
	Hz	Hz	Hz	Hz	Hz	Hz	Hz	Hz	Hz	Hz	Hz	Hz	Hz	kHz	kHz	kHz	kHz	kHz	kHz	kHz	kHz	kHz	kHz	kHz	
Lw (1/3) dB	58.0	64.0	55.0	51.3	52.1	41.9	44.6	49.8	45.0	41.2	38.4	39.3	37.4	33.8	32.3	32.9	33.0	30.9	25.6	23.1	22.0	20.0	21.6	18.1	
Induct Lw dB		65.4			54.9			51.9			44.6			39.8			37.1			28.6			24.9		
LW Total	66.0 dB (re 1 x 10 ⁻¹² watts)																								
LW (A) Total	48.3 dB																								

Sound Power Level, Lw dB



Data Sheet Produced By

Paul Horsley MIOA
Paul Horsley Acoustics Ltd
1 Upper Lane, Gomersal, BD19 4JD
Tel - 01274 879 020

Signed

Date

08.10.14



Paul Horsley Acoustics Ltd
Acoustics & Noise Control Consultancy

CLIENT Toshiba Air Conditioning (UK) Ltd

DATE 08/10/2014

DATA SHEET No J2303-0051

DETERMINATION OF INDUCT SOUND POWER LEVEL IN ACCORDANCE WITH BS EN ISO 5136:2009

Model Reference Toshiba MMD-AP00186BH-E **UNIT SETTINGS** Standard / High

Specific Parameters

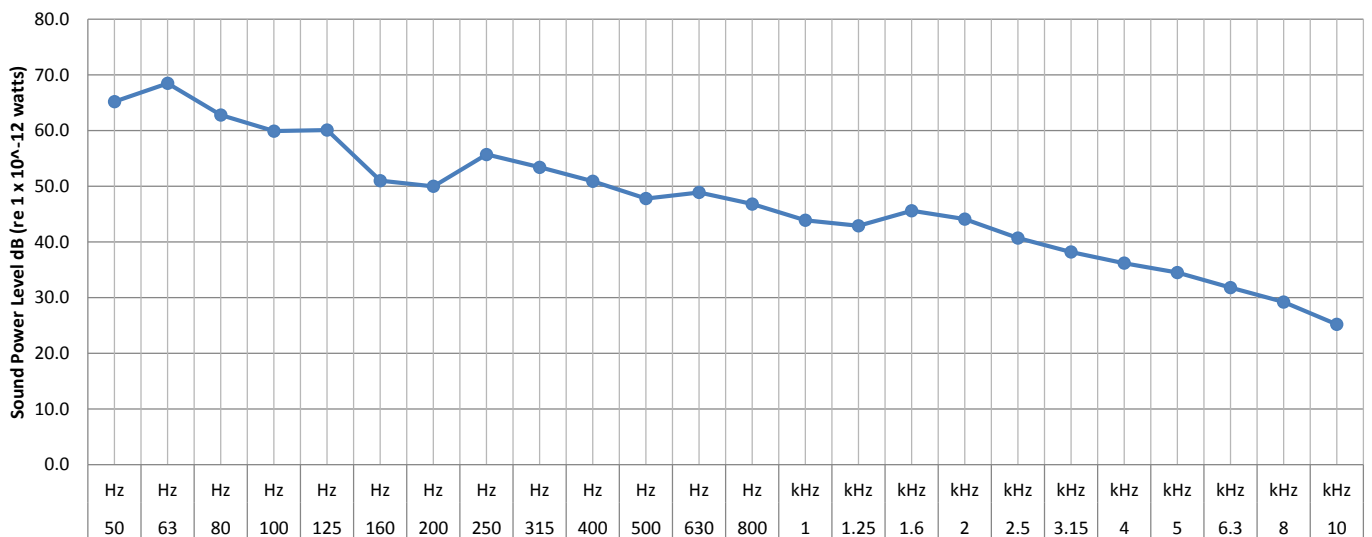
Standard Air Volume 800 cu.m/hr

Standard Operating Pressure 30 Pa

INDUCT SOUND POWER LEVEL - FRESH AIR INTAKE

Frequency	50	63	80	100	125	160	200	250	315	400	500	630	800	1	1.3	1.6	2	2.5	3.2	4	5	6.3	8	10	
	Hz	Hz	Hz	Hz	Hz	Hz	Hz	Hz	Hz	Hz	Hz	Hz	Hz	kHz	kHz	kHz	kHz	kHz	kHz	kHz	kHz	kHz	kHz	kHz	
Lw (1/3) dB	65.2	68.5	62.8	59.9	60.1	51.0	50.0	55.7	53.4	50.9	47.8	48.9	46.8	43.9	42.9	45.6	44.1	40.7	38.2	36.2	34.5	31.8	29.2	25.2	
Induct Lw dB		70.9			63.3			58.4			54.2			49.6			48.7			41.3			34.3		
LW Total	71.9 dB (re 1 x 10 ⁻¹² watts)																								
LW (A) Total	57.1 dB																								

Sound Power Level, Lw dB



Data Sheet Produced By

Signed

Date

Paul Horsley MIOA
Paul Horsley Acoustics Ltd
1 Upper Lane, Gomersal, BD19 4JD
Tel - 01274 879 020

08.10.14



Paul Horsley Acoustics Ltd
Acoustics & Noise Control Consultancy

CLIENT Toshiba Air Conditioning (UK) Ltd

DATE 08/10/2014

DATA SHEET No J2303-0053

DETERMINATION OF INDUCT SOUND POWER LEVEL IN ACCORDANCE WITH BS EN ISO 5136:2009

Model Reference Toshiba MMD-AP00186BH-E **UNIT SETTINGS** Standard / Medium

Specific Parameters

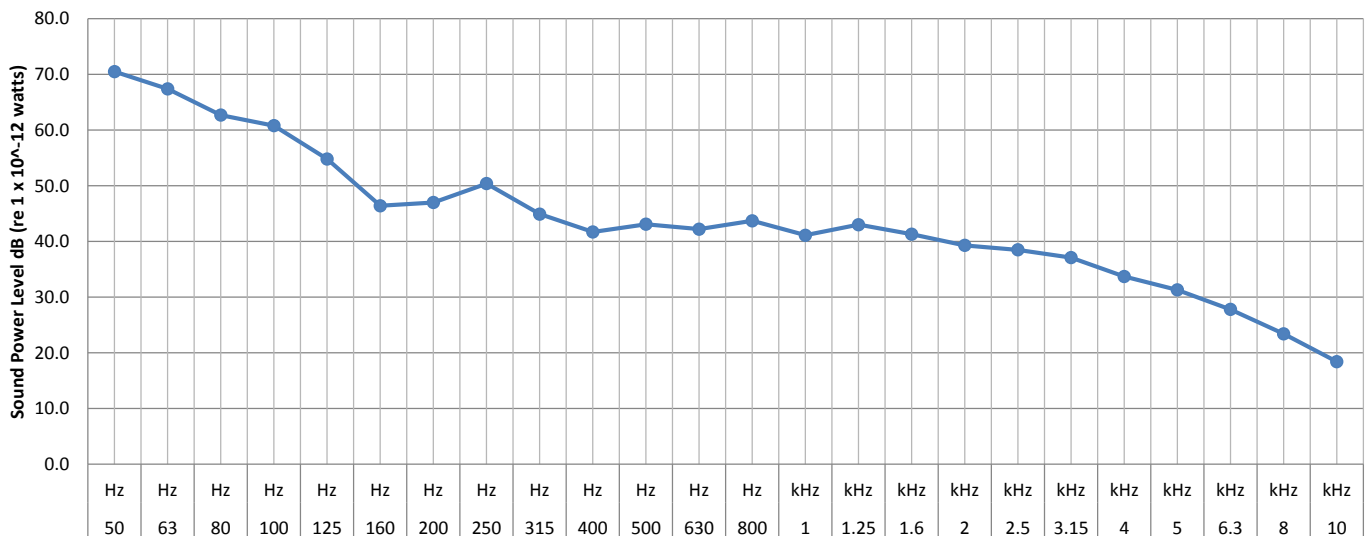
Standard Air Volume 630 cu.m/hr

Standard Operating Pressure 30 Pa

INDUCT SOUND POWER LEVEL - SUPPLY AIR

Frequency	50	63	80	100	125	160	200	250	315	400	500	630	800	1	1.3	1.6	2	2.5	3.2	4	5	6.3	8	10	
	Hz	Hz	Hz	Hz	Hz	Hz	Hz	Hz	Hz	Hz	Hz	Hz	Hz	kHz	kHz	kHz	kHz	kHz	kHz	kHz	kHz	kHz	kHz	kHz	
Lw (1/3) dB	70.5	67.4	62.7	60.8	54.8	46.4	47.0	50.4	44.9	41.7	43.1	42.2	43.7	41.1	43.0	41.3	39.3	38.5	37.1	33.7	31.3	27.8	23.4	18.4	
Induct Lw dB		72.7			61.9			52.8			47.1			47.5			44.6			39.5			29.5		
LW Total	73.1 dB (re 1 x 10 ⁻¹² watts)																								
LW (A) Total	53.8 dB																								

Sound Power Level, Lw dB



Data Sheet Produced By

Paul Horsley MIOA
Paul Horsley Acoustics Ltd
1 Upper Lane, Gomersal, BD19 4JD
Tel - 01274 879 020

Signed

Date

08.10.14

CLIENT Toshiba Air Conditioning (UK) Ltd
DATE 14/10/2014
DATA SHEET No J2303-0067

DETERMINATION OF INDUCT SOUND POWER LEVEL IN ACCORDANCE WITH BS EN ISO 5136:2009

Model Reference Toshiba MMD-AP00366BH-E **UNIT SETTINGS** Standard / Low

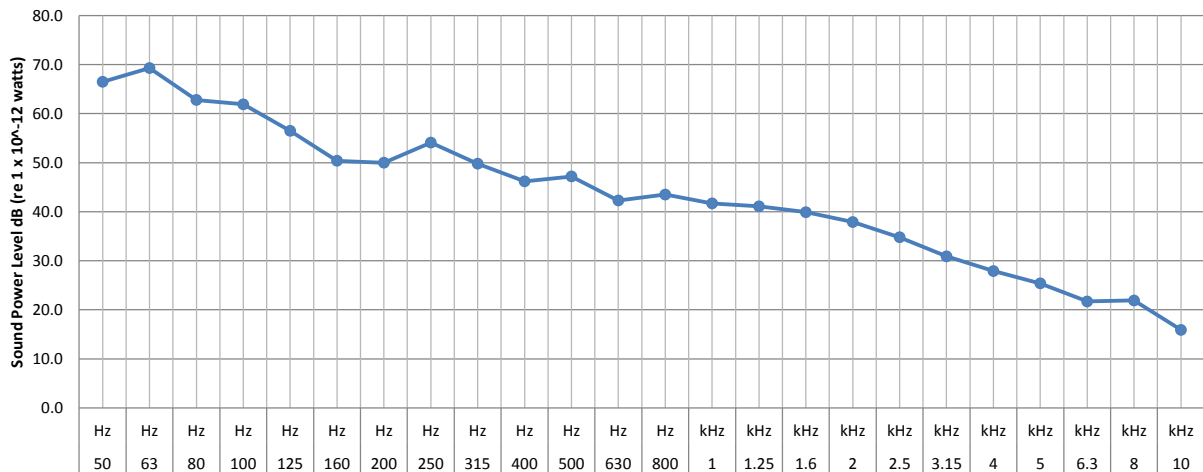
Specific Parameters

Standard Air Volume 1140 cu.m/hr
 Standard Operating Pressure 50 Pa

INDUCT SOUND POWER LEVEL - FRESH AIR INTAKE

Frequency	50	63	80	100	125	160	200	250	315	400	500	630	800	1	1.3	1.6	2	2.5	3.2	4	5	6.3	8	10		
	Hz	Hz	Hz	Hz	Hz	Hz	Hz	Hz	Hz	Hz	Hz	Hz	Hz	kHz	kHz	kHz	kHz	kHz	kHz	kHz	kHz	kHz	kHz	kHz		
Lw (1/3) dB	66.5	69.3	62.8	61.9	56.5	50.4	50.0	54.1	49.8	46.2	47.2	42.3	43.5	41.7	41.1	39.9	37.9	34.8	30.9	27.9	25.4	21.7	21.9	15.9		
Induct Lw dB		71.7			63.2			56.6			50.5			47.0			42.8			33.4			25.3			
LW Total			72.4 dB (re 1 x 10 ⁻¹² watts)																							
LW (A) Total		54.5	dB																							

Sound Power Level, Lw dB



Data Sheet Produced By

Signed

Date

Paul Horsley MIOA
 Paul Horsley Acoustics Ltd
 1 Upper Lane, Gomersal, BD19 4JD
 Tel - 01274 879 020



14.10.14

CLIENT Toshiba Air Conditioning (UK) Ltd
DATE 14/10/2014
DATA SHEET No J2303-0072

DETERMINATION OF INDUCT SOUND POWER LEVEL IN ACCORDANCE WITH BS EN ISO 5136:2009

Model Reference Toshiba MMD-AP00366BH-E **UNIT SETTINGS** Standard / High

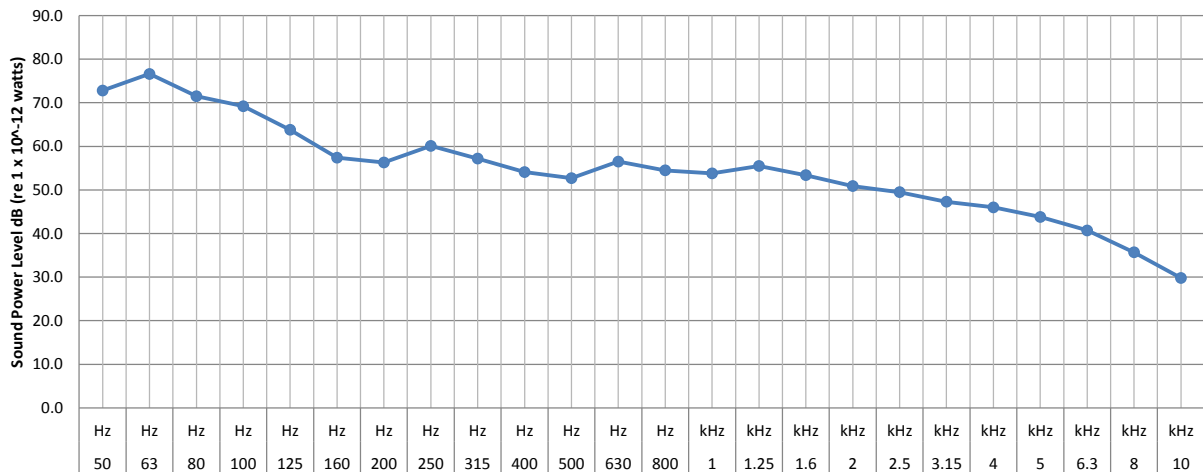
Specific Parameters

Standard Air Volume 1920 cu.m/hr
 Standard Operating Pressure 50 Pa

INDUCT SOUND POWER LEVEL - SUPPLY AIR

Frequency	50	63	80	100	125	160	200	250	315	400	500	630	800	1	1.3	1.6	2	2.5	3.2	4	5	6.3	8	10	
	Hz	Hz	Hz	Hz	Hz	Hz	Hz	Hz	Hz	Hz	Hz	Hz	Hz	kHz	kHz	kHz	kHz	kHz	kHz	kHz	kHz	kHz	kHz	kHz	
Lw (1/3) dB	72.8	76.6	71.5	69.2	63.8	57.4	56.3	60.1	57.2	54.1	52.7	56.5	54.5	53.8	55.5	53.4	50.9	49.5	47.3	46.0	43.8	40.7	35.7	29.8	
Induct Lw dB		79.0			70.5			63.0			59.5			59.4			56.3			50.7				42.2	
LW Total		79.8	dB (re 1 x 10 ⁻¹² watts)																						
LW (A) Total		64.4	dB																						

Sound Power Level, Lw dB



Data Sheet Produced By

Signed

Date

Paul Horsley MIOA
 Paul Horsley Acoustics Ltd
 1 Upper Lane, Gomersal, BD19 4JD
 Tel - 01274 879 020



14.10.14

CLIENT Toshiba Air Conditioning (UK) Ltd
DATE 14/10/2014
DATA SHEET No J2303-0074

DETERMINATION OF INDUCT SOUND POWER LEVEL IN ACCORDANCE WITH BS EN ISO 5136:2009

Model Reference Toshiba MMD-AP00486BH-E **UNIT SETTINGS** Standard / Medium

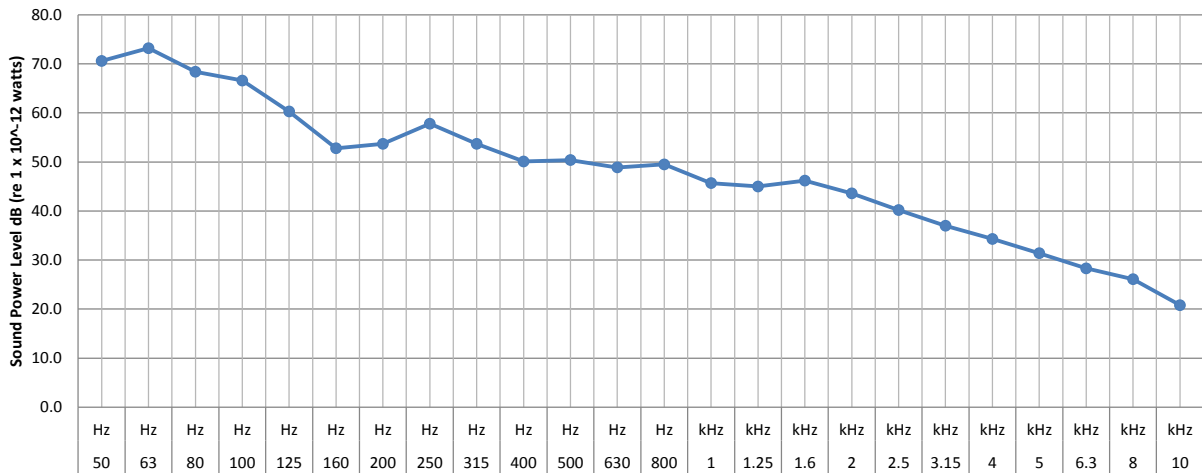
Specific Parameters

Standard Air Volume 1650 cu.m/hr
 Standard Operating Pressure 50 Pa

INDUCT SOUND POWER LEVEL - FRESH AIR INTAKE

Frequency	50	63	80	100	125	160	200	250	315	400	500	630	800	1	1.3	1.6	2	2.5	3.2	4	5	6.3	8	10		
	Hz	Hz	Hz	Hz	Hz	Hz	Hz	Hz	Hz	Hz	Hz	Hz	Hz	kHz	kHz	kHz	kHz	kHz	kHz	kHz	kHz	kHz	kHz	kHz	kHz	
Lw (1/3) dB	70.6	73.2	68.4	66.6	60.3	52.8	53.7	57.8	53.7	50.1	50.4	48.9	49.5	45.7	45.0	46.2	43.6	40.2	37.0	34.3	31.4	28.3	26.1	20.8		
Induct Lw dB		75.9			67.7			60.3			54.6			52.0			48.8			39.6			30.8			
LW Total	76.7 dB (re 1 x 10 ⁻¹² watts)																									
LW (A) Total		59.0	dB																							

Sound Power Level, Lw dB

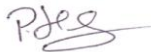


Data Sheet Produced By

Signed

Date

Paul Horsley MIOA
 Paul Horsley Acoustics Ltd
 1 Upper Lane, Gomersal, BD19 4JD
 Tel - 01274 879 020



14.10.14

CLIENT Toshiba Air Conditioning (UK) Ltd
DATE 14/10/2014
DATA SHEET No J2303-0075

DETERMINATION OF INDUCT SOUND POWER LEVEL IN ACCORDANCE WITH BS EN ISO 5136:2009

Model Reference Toshiba MMD-AP00486BH-E **UNIT SETTINGS** Standard / High

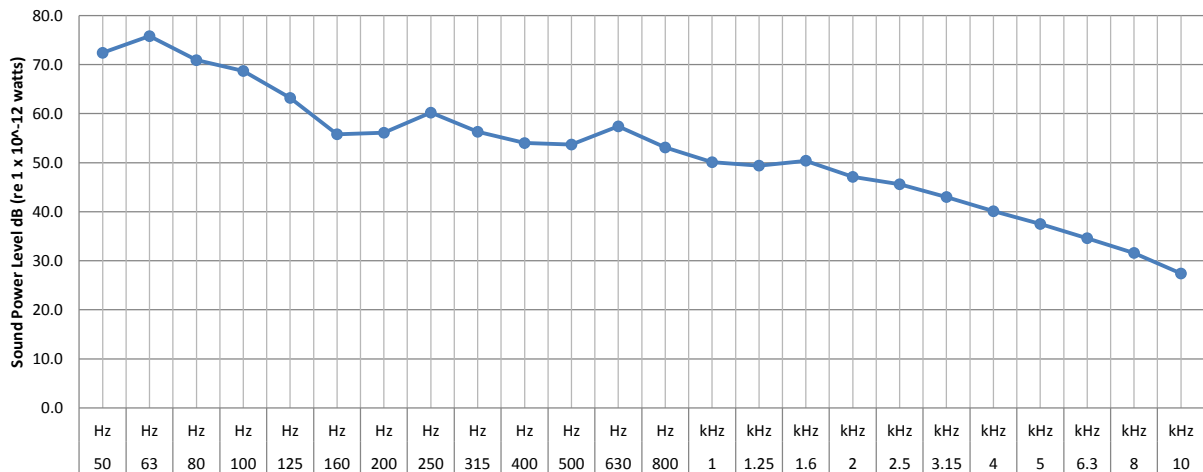
Specific Parameters

Standard Air Volume 2100 cu.m/hr
 Standard Operating Pressure 50 Pa

INDUCT SOUND POWER LEVEL - FRESH AIR INTAKE

Frequency	50	63	80	100	125	160	200	250	315	400	500	630	800	1	1.3	1.6	2	2.5	3.2	4	5	6.3	8	10		
	Hz	Hz	Hz	Hz	Hz	Hz	Hz	Hz	Hz	Hz	Hz	Hz	Hz	kHz	kHz	kHz	kHz	kHz	kHz	kHz	kHz	kHz	kHz	kHz	kHz	
Lw (1/3) dB	72.4	75.8	70.9	68.7	63.2	55.8	56.1	60.2	56.3	54.0	53.7	57.4	53.1	50.1	49.4	50.4	47.1	45.6	43.0	40.1	37.5	34.6	31.6	27.4		
Induct Lw dB		78.3			69.9			62.7			60.2			56.0			52.9			45.5			36.9			
LW Total	79.1 dB (re 1 x 10 ⁻¹² watts)																									
LW (A) Total	62.7	dB																								

Sound Power Level, Lw dB



Data Sheet Produced By

Paul Horsley MIOA
 Paul Horsley Acoustics Ltd
 1 Upper Lane, Gomersal, BD19 4JD
 Tel - 01274 879 020

Signed



Date

14.10.14

CLIENT Toshiba Air Conditioning (UK) Ltd
DATE 14/10/2014
DATA SHEET No J2303-0076

DETERMINATION OF INDUCT SOUND POWER LEVEL IN ACCORDANCE WITH BS EN ISO 5136:2009

Model Reference Toshiba MMD-AP00486BH-E **UNIT SETTINGS** Standard / Low

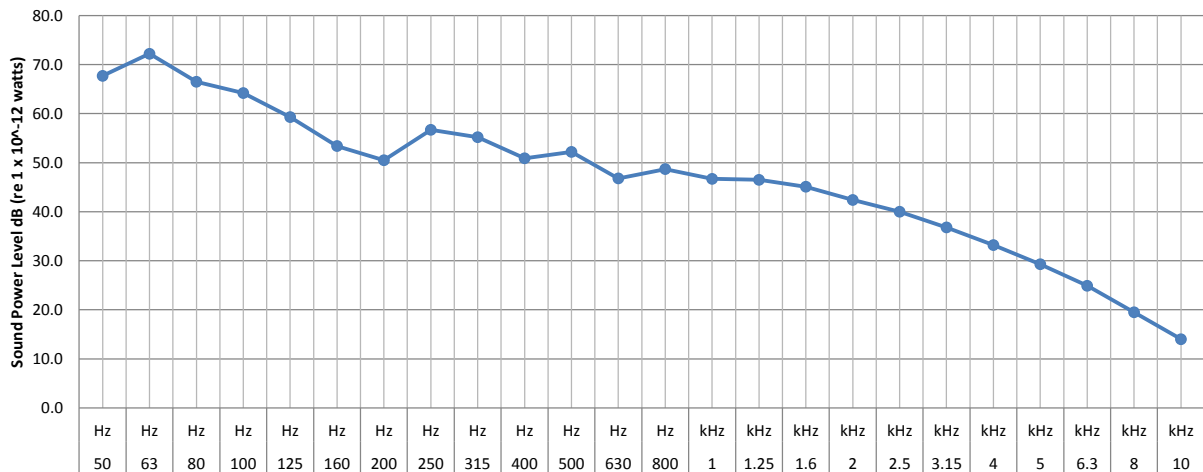
Specific Parameters

Standard Air Volume 1260 cu.m/hr
 Standard Operating Pressure 50 Pa

INDUCT SOUND POWER LEVEL - SUPPLY AIR

Frequency	50	63	80	100	125	160	200	250	315	400	500	630	800	1	1.3	1.6	2	2.5	3.2	4	5	6.3	8	10		
	Hz	Hz	Hz	Hz	Hz	Hz	Hz	Hz	Hz	Hz	Hz	Hz	Hz	kHz	kHz	kHz	kHz	kHz	kHz	kHz	kHz	kHz	kHz	kHz		
Lw (1/3) dB	67.7	72.2	66.5	64.2	59.3	53.4	50.5	56.7	55.2	50.9	52.2	46.8	48.7	46.7	46.5	45.1	42.4	40.0	36.8	33.2	29.3	24.9	19.5	14.0		
Induct Lw dB		74.3			65.7			59.6			55.3			52.2			47.8			38.9			26.3			
LW Total	75.1 dB (re 1 x 10 ⁻¹² watts)																									
LW (A) Total	58.4 dB																									

Sound Power Level, Lw dB



Data Sheet Produced By

Paul Horsley MIOA
 Paul Horsley Acoustics Ltd
 1 Upper Lane, Gomersal, BD19 4JD
 Tel - 01274 879 020

Signed



Date

14.10.14

CLIENT Toshiba Air Conditioning (UK) Ltd
DATE 14/10/2014
DATA SHEET No J2303-0077

DETERMINATION OF INDUCT SOUND POWER LEVEL IN ACCORDANCE WITH BS EN ISO 5136:2009

Model Reference Toshiba MMD-AP00486BH-E **UNIT SETTINGS** Standard / Medium

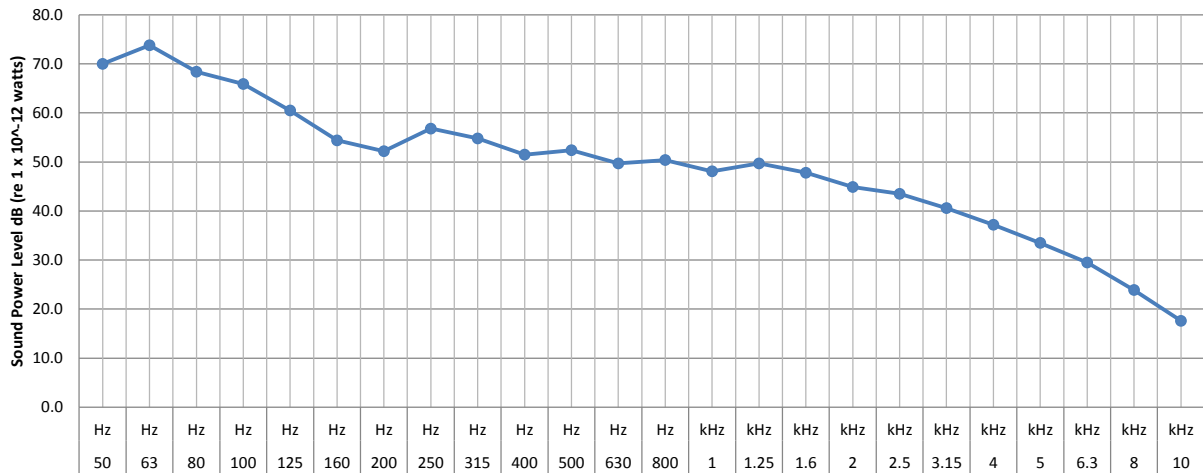
Specific Parameters

Standard Air Volume 1650 cu.m/hr
 Standard Operating Pressure 50 Pa

INDUCT SOUND POWER LEVEL - SUPPLY AIR

Frequency	50	63	80	100	125	160	200	250	315	400	500	630	800	1	1.3	1.6	2	2.5	3.2	4	5	6.3	8	10		
	Hz	Hz	Hz	Hz	Hz	Hz	Hz	Hz	Hz	Hz	Hz	Hz	Hz	Hz	kHz	kHz	kHz	kHz	kHz	kHz	kHz	kHz	kHz	kHz	kHz	
Lw (1/3) dB	70.0	73.8	68.4	65.9	60.5	54.4	52.2	56.8	54.8	51.5	52.4	49.7	50.4	48.1	49.7	47.8	44.9	43.5	40.6	37.2	33.5	29.5	23.9	17.6		
Induct Lw dB		76.1			67.2			59.8			56.1			54.3			50.6			42.8				30.8		
LW Total	76.8 dB (re 1 x 10 ⁻¹² watts)																									
LW (A) Total		60.0	dB																							

Sound Power Level, Lw dB



Data Sheet Produced By

Signed

Date

Paul Horsley MIOA
 Paul Horsley Acoustics Ltd
 1 Upper Lane, Gomersal, BD19 4JD
 Tel - 01274 879 020



14.10.14

CLIENT Toshiba Air Conditioning (UK) Ltd
DATE 14/10/2014
DATA SHEET No J2303-0078

DETERMINATION OF INDUCT SOUND POWER LEVEL IN ACCORDANCE WITH BS EN ISO 5136:2009

Model Reference Toshiba MMD-AP00486BH-E **UNIT SETTINGS** Standard / High

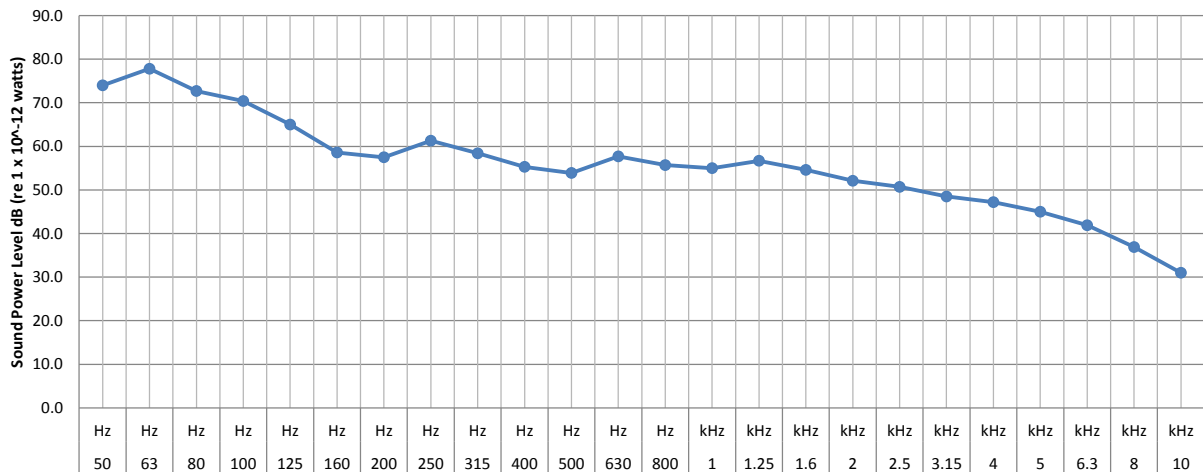
Specific Parameters

Standard Air Volume 2100 cu.m/hr
Standard Operating Pressure 50 Pa

INDUCT SOUND POWER LEVEL - SUPPLY AIR

Frequency	50	63	80	100	125	160	200	250	315	400	500	630	800	1	1.3	1.6	2	2.5	3.2	4	5	6.3	8	10		
	Hz	Hz	Hz	Hz	Hz	Hz	Hz	Hz	Hz	Hz	Hz	Hz	Hz	kHz	kHz	kHz	kHz	kHz	kHz	kHz	kHz	kHz	kHz	kHz		
Lw (1/3) dB	74.0	77.8	72.7	70.4	65.0	58.6	57.5	61.3	58.4	55.3	53.9	57.7	55.7	55.0	56.7	54.6	52.1	50.7	48.5	47.2	45.0	41.9	36.9	31.0		
Induct Lw dB		80.2			71.7			64.2			60.7			60.6			57.5			51.9				43.4		
LW Total			81.0	dB (re 1 x 10 ⁻¹² watts)																						
LW (A) Total		65.6	dB																							

Sound Power Level, Lw dB



Data Sheet Produced By

Signed

Date

Paul Horsley MIOA
Paul Horsley Acoustics Ltd
1 Upper Lane, Gomersal, BD19 4JD
Tel - 01274 879 020



14.10.14

CLIENT Toshiba Air Conditioning (UK) Ltd
DATE 14/10/2014
DATA SHEET No J2303-0082

DETERMINATION OF INDUCT SOUND POWER LEVEL IN ACCORDANCE WITH BS EN ISO 5136:2009

Model Reference Toshiba MMD-AP00566BH-E **UNIT SETTINGS** Standard / Low

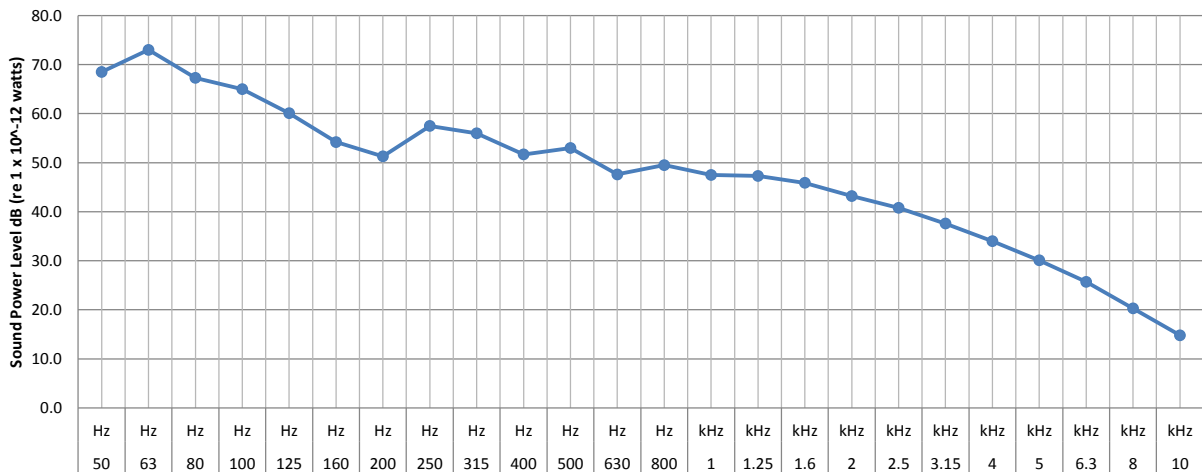
Specific Parameters

Standard Air Volume 1260 cu.m/hr
 Standard Operating Pressure 50 Pa

INDUCT SOUND POWER LEVEL - SUPPLY AIR

Frequency	50	63	80	100	125	160	200	250	315	400	500	630	800	1	1.3	1.6	2	2.5	3.2	4	5	6.3	8	10		
	Hz	Hz	Hz	Hz	Hz	Hz	Hz	Hz	Hz	Hz	Hz	Hz	Hz	kHz	kHz	kHz	kHz	kHz	kHz	kHz	kHz	kHz	kHz	kHz		
Lw (1/3) dB	68.5	73.0	67.3	65.0	60.1	54.2	51.3	57.5	56.0	51.7	53.0	47.6	49.5	47.5	47.3	45.9	43.2	40.8	37.6	34.0	30.1	25.7	20.3	14.8		
Induct Lw dB		75.1			66.5			60.4			56.1			53.0			48.6			39.7				27.1		
LW Total	75.9 dB (re 1 x 10 ⁻¹² watts)																									
LW (A) Total		59.2	dB																							

Sound Power Level, Lw dB



Data Sheet Produced By

Paul Horsley MIOA
 Paul Horsley Acoustics Ltd
 1 Upper Lane, Gomersal, BD19 4JD
 Tel - 01274 879 020

Signed



Date

14.10.14

CLIENT Toshiba Air Conditioning (UK) Ltd
DATE 14/10/2014
DATA SHEET No J2303-0084

DETERMINATION OF INDUCT SOUND POWER LEVEL IN ACCORDANCE WITH BS EN ISO 5136:2009

Model Reference Toshiba MMD-AP00566BH-E **UNIT SETTINGS** Standard / High

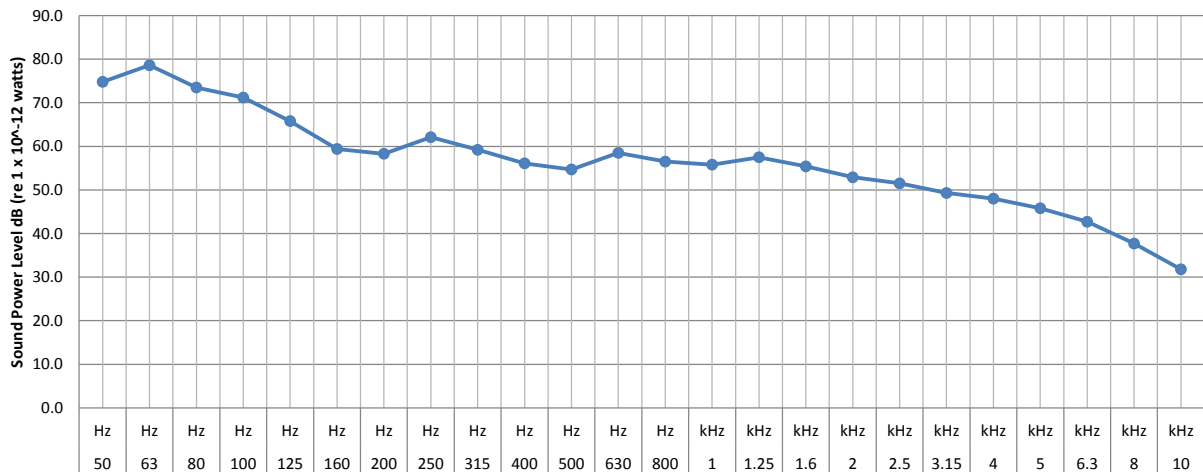
Specific Parameters

Standard Air Volume 2100 cu.m/hr
 Standard Operating Pressure 50 Pa

INDUCT SOUND POWER LEVEL - SUPPLY AIR

Frequency	50	63	80	100	125	160	200	250	315	400	500	630	800	1	1.3	1.6	2	2.5	3.2	4	5	6.3	8	10	
	Hz	Hz	Hz	Hz	Hz	Hz	Hz	Hz	Hz	Hz	Hz	Hz	Hz	kHz	kHz	kHz	kHz	kHz	kHz	kHz	kHz	kHz	kHz	kHz	
Lw (1/3) dB	74.8	78.6	73.5	71.2	65.8	59.4	58.3	62.1	59.2	56.1	54.7	58.5	56.5	55.8	57.5	55.4	52.9	51.5	49.3	48.0	45.8	42.7	37.7	31.8	
Induct Lw dB		81.0			72.5			65.0			61.5			61.4			58.3			52.7				44.2	
LW Total		81.8	dB (re 1 x 10 ⁻¹² watts)																						
LW (A) Total		66.4	dB																						

Sound Power Level, Lw dB



Data Sheet Produced By

Signed

Date

Paul Horsley MIOA
 Paul Horsley Acoustics Ltd
 1 Upper Lane, Gomersal, BD19 4JD
 Tel - 01274 879 020



14.10.14