



Paul Horsley Acoustics Ltd
Acoustics & Noise Control Consultancy

CLIENT Toshiba Air Conditioning (UK) Ltd

DATE 13/10/2014

DETERMINATION OF INDUCT SOUND POWER LEVEL IN ACCORDANCE WITH BS EN ISO 5136:2009

DATA SHEET No	Model Reference	UNIT SETTINGS	LOCATION
J2303-0001	MMD-AP0074SPH-E	Standard /Low	Fresh Air Intake
J2303-0002	MMD-AP0074SPH-E	Standard /Medium	Fresh Air Intake
J2303-0003	MMD-AP0074SPH-E	Standard /High	Fresh Air Intake
J2303-0004	MMD-AP0074SPH-E	Standard /Low	Supply Air
J2303-0005	MMD-AP0074SPH-E	Standard /Medium	Supply Air
J2303-0006	MMD-AP0074SPH-E	Standard /High	Supply Air
J2303-0007	MMD-AP0124SPH-E	Standard /Low	Fresh Air Intake
J2303-0008	MMD-AP0124SPH-E	Standard /Medium	Fresh Air Intake
J2303-0009	MMD-AP0124SPH-E	Standard /High	Fresh Air Intake
J2303-0010	MMD-AP0124SPH-E	Standard /Low	Supply Air
J2303-0011	MMD-AP0124SPH-E	Standard /Medium	Supply Air
J2303-0012	MMD-AP0124SPH-E	Standard /High	Supply Air
J2303-0013	MMD-AP0154SPH-E	Standard /Low	Fresh Air Intake
J2303-0014	MMD-AP0154SPH-E	Standard /Medium	Fresh Air Intake
J2303-0015	MMD-AP0154SPH-E	Standard /High	Fresh Air Intake
J2303-0016	MMD-AP0154SPH-E	Standard /Low	Supply Air
J2303-0017	MMD-AP0154SPH-E	Standard /Medium	Supply Air
J2303-0018	MMD-AP0154SPH-E	Standard /High	Supply Air
J2303-0019	MMD-AP0244SPH-E	Standard /Low	Fresh Air Intake
J2303-0020	MMD-AP0244SPH-E	Standard /Medium	Fresh Air Intake
J2303-0021	MMD-AP0244SPH-E	Standard /High	Fresh Air Intake
J2303-0022	MMD-AP0244SPH-E	Standard /Low	Supply Air
J2303-0023	MMD-AP0244SPH-E	Standard /Medium	Supply Air
J2303-0024	MMD-AP0244SPH-E	Standard /High	Supply Air
J2303-0025	MMD-AP0274SPH-E	Standard /Low	Fresh Air Intake
J2303-0026	MMD-AP0274SPH-E	Standard /Medium	Fresh Air Intake
J2303-0027	MMD-AP0274SPH-E	Standard /High	Fresh Air Intake
J2303-0028	MMD-AP0274SPH-E	Standard /Low	Supply Air
J2303-0029	MMD-AP0274SPH-E	Standard /Medium	Supply Air
J2303-0030	MMD-AP0274SPH-E	Standard /High	Supply Air

CLIENT Toshiba Air Conditioning (UK) Ltd
DATE 08/10/2014
DATA SHEET No J2303-0004

DETERMINATION OF INDUCT SOUND POWER LEVEL IN ACCORDANCE WITH BS EN ISO 5136:2009

Model Reference Toshiba MMD-AP0074SPH-E **UNIT SETTINGS** Standard / Low

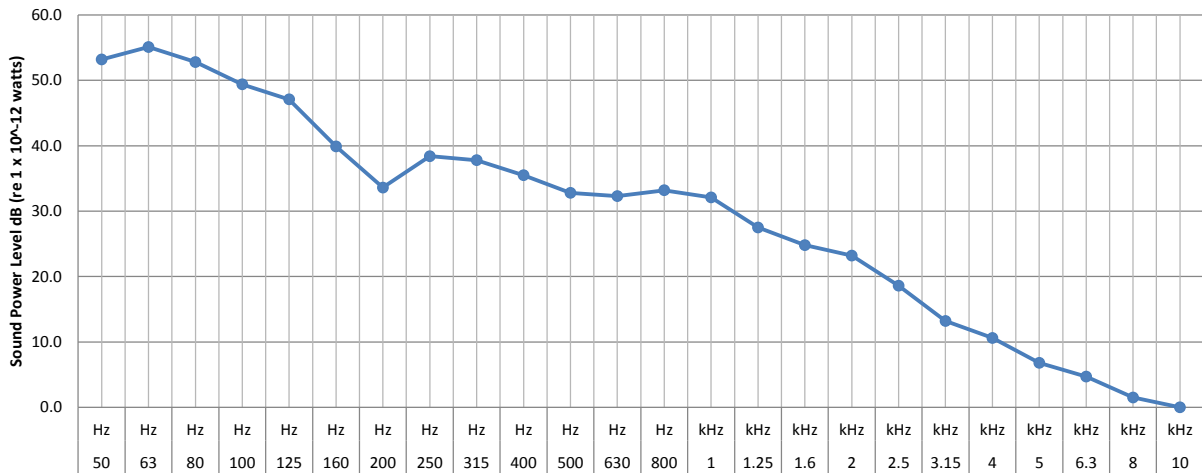
Specific Parameters

Standard Air Volume 400 cu.m/hr
 Standard Operating Pressure 10 Pa

INDUCT SOUND POWER LEVEL - SUPPLY AIR

Frequency	50	63	80	100	125	160	200	250	315	400	500	630	800	1	1.3	1.6	2	2.5	3.2	4	5	6.3	8	10		
	Hz	Hz	Hz	Hz	Hz	Hz	Hz	Hz	Hz	Hz	Hz	Hz	Hz	kHz	kHz	kHz	kHz	kHz	kHz	kHz	kHz	kHz	kHz	kHz		
Lw (1/3) dB	53.2	55.1	52.8	49.4	47.1	39.9	33.6	38.4	37.8	35.5	32.8	32.3	33.2	32.1	27.5	24.8	23.2	18.6	13.2	10.6	6.8	4.7	1.5	0.0		
Induct Lw dB		58.6			51.7			41.8			38.5			36.3			27.7			15.7			7.3			
LW Total	59.5 dB (re 1 x 10 ⁻¹² watts)																									
LW (A) Total		42.1	dB																							

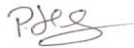
Sound Power Level, Lw dB



Data Sheet Produced By

Paul Horsley MIOA
 Paul Horsley Acoustics Ltd
 1 Upper Lane, Gomersal, BD19 4JD
 Tel - 01274 879 020

Signed



Date

08.10.14

CLIENT Toshiba Air Conditioning (UK) Ltd

DATE 08/10/2014

DATA SHEET No J2303-0006

DETERMINATION OF INDUCT SOUND POWER LEVEL IN ACCORDANCE WITH BS EN ISO 5136:2009

Model Reference Toshiba MMD-AP0074SPH-E **UNIT SETTINGS** Standard / High

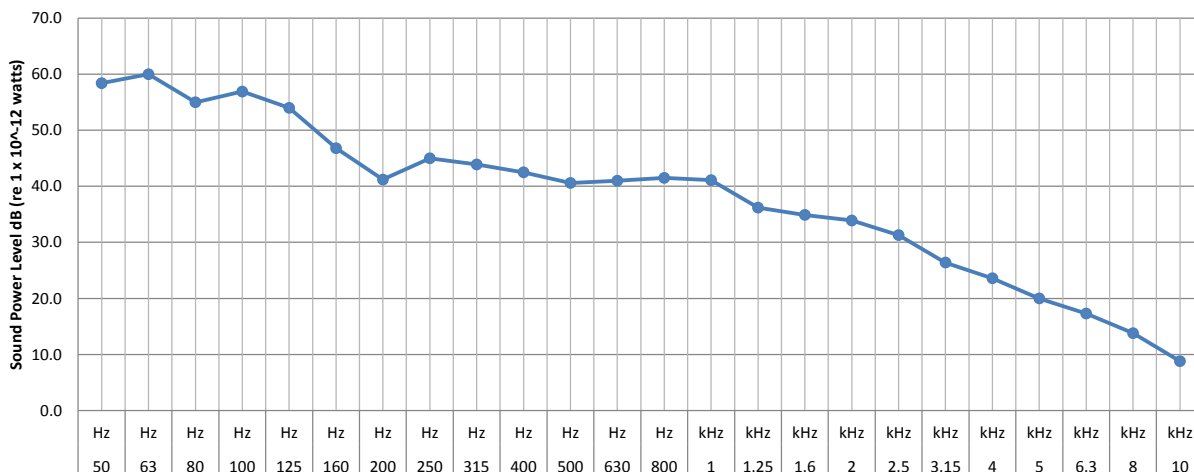
Specific Parameters

Standard Air Volume 540 cu.m/hr
Standard Operating Pressure 10 Pa

INDUCT SOUND POWER LEVEL - SUPPLY AIR

Frequency	50	63	80	100	125	160	200	250	315	400	500	630	800	1	1.3	1.6	2	2.5	3.2	4	5	6.3	8	10		
	Hz	Hz	Hz	Hz	Hz	Hz	Hz	Hz	Hz	Hz	Hz	Hz	Hz	kHz	kHz	kHz	kHz	kHz	kHz	kHz	kHz	kHz	kHz	kHz	kHz	
Lw (1/3) dB	58.4	60.0	55.0	56.9	54.0	46.8	41.2	45.0	43.9	42.5	40.6	41.0	41.5	41.1	36.2	34.9	33.9	31.3	26.4	23.6	20.0	17.3	13.8	8.8		
Induct Lw dB		63.0			59.0			48.4			46.2			44.9			38.4			28.8				19.3		
LW Total	64.7 dB (re 1 x 10 ⁻¹² watts)																									
LW (A) Total		49.8	dB																							

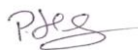
Sound Power Level, Lw dB



Data Sheet Produced By

Paul Horsley MIOA
Paul Horsley Acoustics Ltd
1 Upper Lane, Gomersal, BD19 4JD
Tel - 01274 879 020

Signed



Date

08.10.14



Paul Horsley Acoustics Ltd
Acoustics & Noise Control Consultancy

CLIENT Toshiba Air Conditioning (UK) Ltd

DATE 08/10/2014

DATA SHEET No J2303-0012

DETERMINATION OF INDUCT SOUND POWER LEVEL IN ACCORDANCE WITH BS EN ISO 5136:2009

Model Reference Toshiba MMD-AP00124SPH-E **UNIT SETTINGS** Standard / High

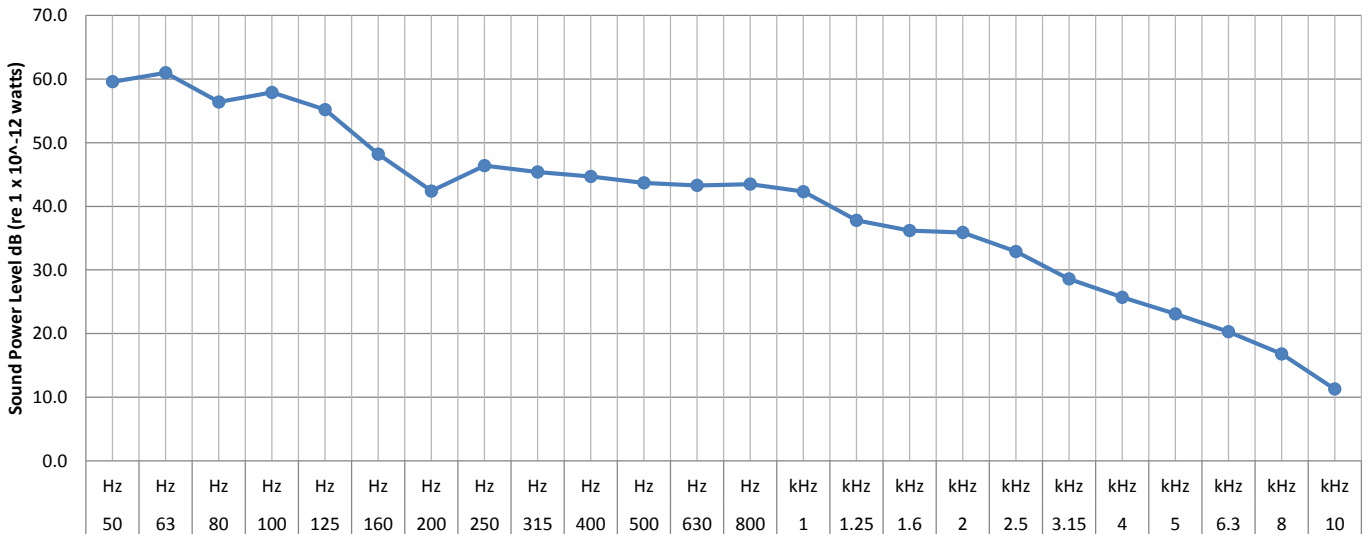
Specific Parameters

Standard Air Volume 600 cu.m/hr
Standard Operating Pressure 10 Pa

INDUCT SOUND POWER LEVEL - SUPPLY AIR

Frequency	50	63	80	100	125	160	200	250	315	400	500	630	800	1	1.3	1.6	2	2.5	3.2	4	5	6.3	8	10
	Hz	Hz	Hz	Hz	Hz	Hz	Hz	Hz	Hz	Hz	Hz	Hz	Hz	kHz	kHz	kHz	kHz	kHz	kHz	kHz	kHz	kHz	kHz	kHz
Lw (1/3) dB	59.6	61.0	56.4	57.9	55.2	48.2	42.4	46.4	45.4	44.7	43.7	43.3	43.5	42.3	37.8	36.2	35.9	32.9	28.6	25.7	23.1	20.3	16.8	11.3
Induct Lw dB		64.2			60.1			49.8			48.7			46.6			40.0			31.1			22.3	
LW Total	65.9 dB (re 1 x 10 ⁻¹² watts)																							
LW (A) Total	51.5 dB																							

Sound Power Level, Lw dB



Data Sheet Produced By

Paul Horsley MIOA
Paul Horsley Acoustics Ltd
1 Upper Lane, Gomersal, BD19 4JD
Tel - 01274 879 020

Signed

Date

08.10.14



Paul Horsley Acoustics Ltd
Acoustics & Noise Control Consultancy

CLIENT Toshiba Air Conditioning (UK) Ltd

DATE 08/10/2014

DATA SHEET No J2303-0013

DETERMINATION OF INDUCT SOUND POWER LEVEL IN ACCORDANCE WITH BS EN ISO 5136:2009

Model Reference Toshiba MMD-AP00154SPH-E **UNIT SETTINGS** Standard / Low

Specific Parameters

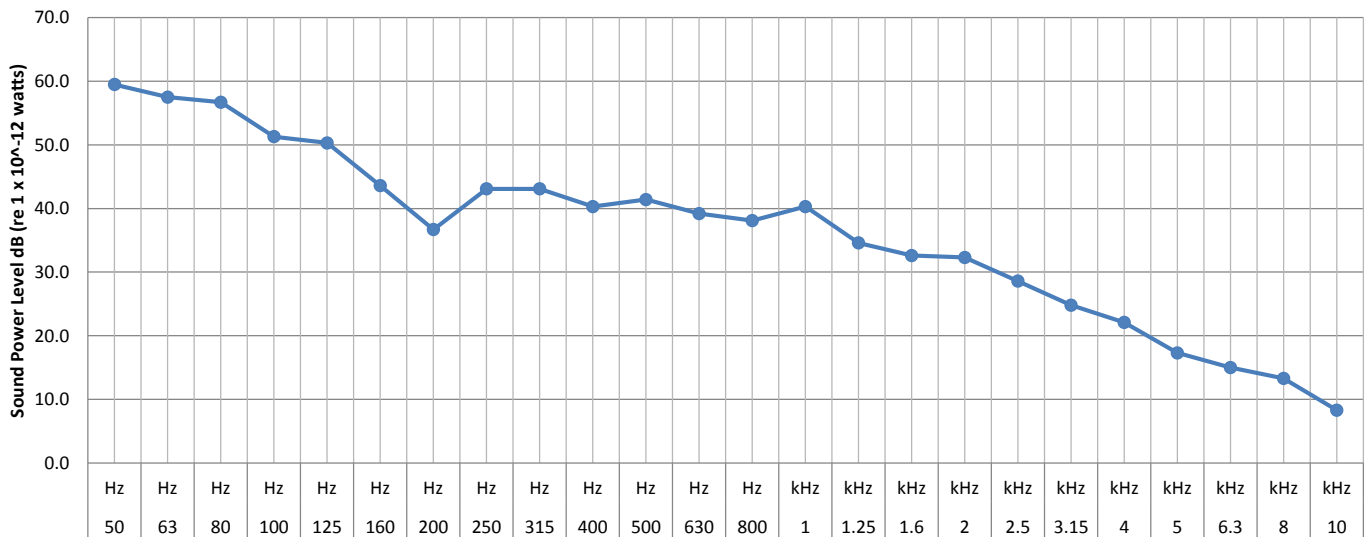
Standard Air Volume 520 cu.m/hr

Standard Operating Pressure 10 Pa

INDUCT SOUND POWER LEVEL - FRESH AIR INTAKE

Frequency	50	63	80	100	125	160	200	250	315	400	500	630	800	1	1.3	1.6	2	2.5	3.2	4	5	6.3	8	10		
	Hz	Hz	Hz	Hz	Hz	Hz	Hz	Hz	Hz	Hz	Hz	Hz	Hz	kHz	kHz	kHz	kHz	kHz	kHz	kHz	kHz	kHz	kHz	kHz		
Lw (1/3) dB	59.5	57.5	56.7	51.3	50.3	43.6	36.7	43.1	43.1	40.3	41.4	39.2	38.1	40.3	34.6	32.6	32.3	28.6	24.8	22.1	17.3	15.0	13.3	8.3		
Induct Lw dB		62.8			54.2			46.6			45.2			43.0			36.3			27.1			17.8			
LW Total	63.6 dB (re 1 x 10 ⁻¹² watts)																									
LW (A) Total	47.8 dB																									

Sound Power Level, Lw dB



Data Sheet Produced By

Paul Horsley MIOA
Paul Horsley Acoustics Ltd
1 Upper Lane, Gomersal, BD19 4JD
Tel - 01274 879 020

Signed

Date

08.10.14



Paul Horsley Acoustics Ltd
Acoustics & Noise Control Consultancy

CLIENT Toshiba Air Conditioning (UK) Ltd

DATE 08/10/2014

DATA SHEET No J2303-0019

DETERMINATION OF INDUCT SOUND POWER LEVEL IN ACCORDANCE WITH BS EN ISO 5136:2009

Model Reference Toshiba MMD-AP0244SPH-E **UNIT SETTINGS** Standard / Low

Specific Parameters

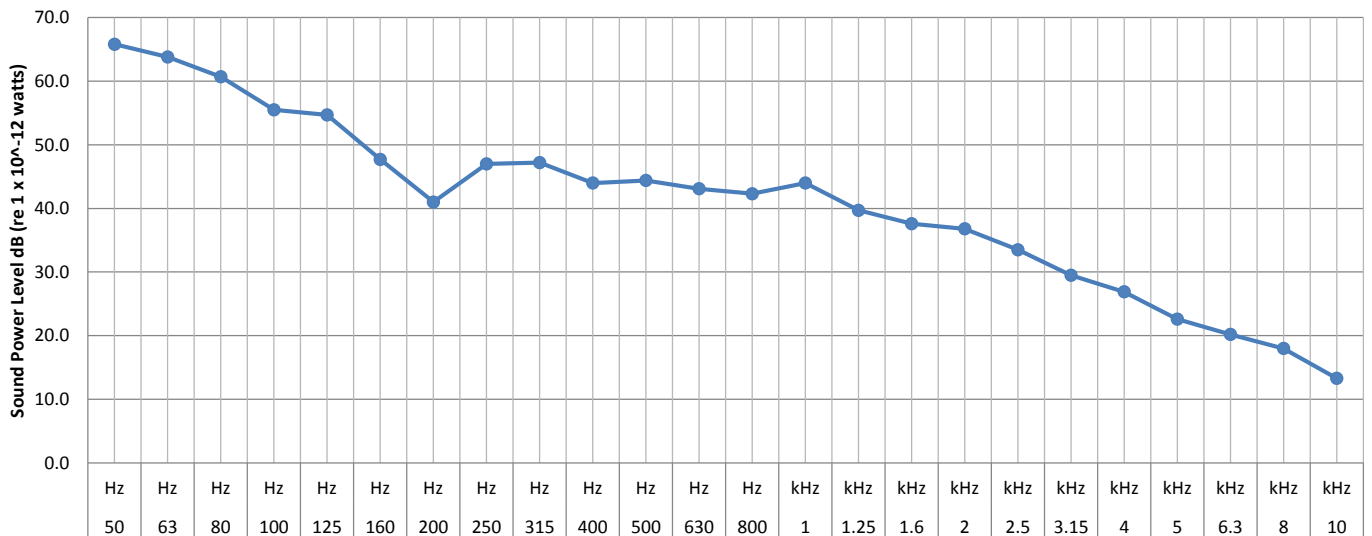
Standard Air Volume 900 cu.m/hr

Standard Operating Pressure 10 Pa

INDUCT SOUND POWER LEVEL - FRESH AIR INTAKE

Frequency	50	63	80	100	125	160	200	250	315	400	500	630	800	1	1.3	1.6	2	2.5	3.2	4	5	6.3	8	10	
	Hz	Hz	Hz	Hz	Hz	Hz	Hz	Hz	Hz	Hz	Hz	Hz	Hz	kHz	kHz	kHz	kHz	kHz	kHz	kHz	kHz	kHz	kHz	kHz	
Lw (1/3) dB	65.8	63.8	60.7	55.5	54.7	47.7	41.0	47.0	47.2	44.0	44.4	43.1	42.3	44.0	39.7	37.6	36.8	33.5	29.5	26.9	22.6	20.2	18.0	13.3	
Induct Lw dB		68.7			58.5			50.6			48.6			47.1			41.1			31.9			22.8		
LW Total	69.2 dB (re 1 x 10 ⁻¹² watts)																								
LW (A) Total	52.0 dB																								

Sound Power Level, Lw dB



Data Sheet Produced By

Signed

Date

Paul Horsley MIOA
Paul Horsley Acoustics Ltd
1 Upper Lane, Gomersal, BD19 4JD
Tel - 01274 879 020

08.10.14



Paul Horsley Acoustics Ltd
Acoustics & Noise Control Consultancy

CLIENT Toshiba Air Conditioning (UK) Ltd

DATE 08/10/2014

DATA SHEET No J2303-0020

DETERMINATION OF INDUCT SOUND POWER LEVEL IN ACCORDANCE WITH BS EN ISO 5136:2009

Model Reference Toshiba MMD-AP0244SPH-E **UNIT SETTINGS** Standard / Medium

Specific Parameters

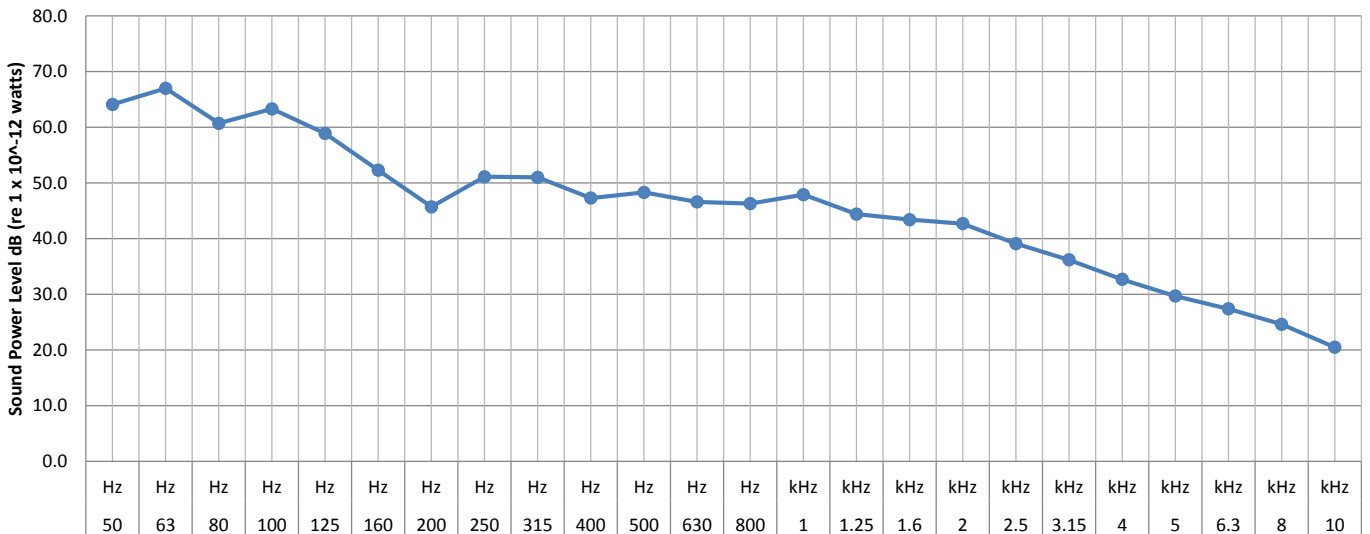
Standard Air Volume 1000 cu.m/hr

Standard Operating Pressure 10 Pa

INDUCT SOUND POWER LEVEL - FRESH AIR INTAKE

Frequency	50	63	80	100	125	160	200	250	315	400	500	630	800	1	1.3	1.6	2	2.5	3.2	4	5	6.3	8	10	
	Hz	Hz	Hz	Hz	Hz	Hz	Hz	Hz	Hz	Hz	Hz	Hz	Hz	kHz	kHz	kHz	kHz	kHz	kHz	kHz	kHz	kHz	kHz	kHz	
Lw (1/3) dB	64.1	67.0	60.7	63.3	58.9	52.3	45.7	51.1	51.0	47.3	48.3	46.6	46.3	47.9	44.4	43.4	42.7	39.1	36.2	32.7	29.7	27.4	24.6	20.5	
Induct Lw dB		69.4			64.9			54.7			52.2			51.2			46.9			38.4			29.8		
LW Total	71.0 dB (re 1 x 10 ⁻¹² watts)																								
LW (A) Total	56.3 dB																								

Sound Power Level, Lw dB



Data Sheet Produced By

Signed

Date

Paul Horsley MIOA
Paul Horsley Acoustics Ltd
1 Upper Lane, Gomersal, BD19 4JD
Tel - 01274 879 020

08.10.14



Paul Horsley Acoustics Ltd
Acoustics & Noise Control Consultancy

CLIENT Toshiba Air Conditioning (UK) Ltd

DATE 08/10/2014

DATA SHEET No J2303-0021

DETERMINATION OF INDUCT SOUND POWER LEVEL IN ACCORDANCE WITH BS EN ISO 5136:2009

Model Reference Toshiba MMD-AP0244SPH-E **UNIT SETTINGS** Standard /High

Specific Parameters

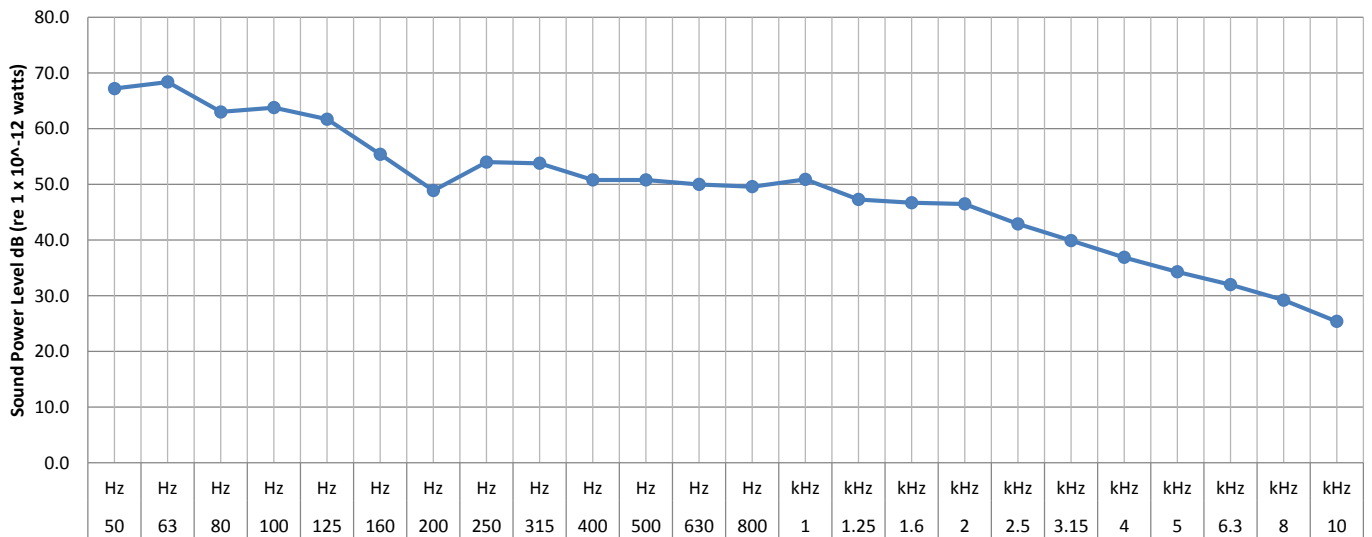
Standard Air Volume 1080 cu.m/hr

Standard Operating Pressure 10 Pa

INDUCT SOUND POWER LEVEL - FRESH AIR INTAKE

Frequency	50	63	80	100	125	160	200	250	315	400	500	630	800	1	1.3	1.6	2	2.5	3.2	4	5	6.3	8	10	
	Hz	Hz	Hz	Hz	Hz	Hz	Hz	Hz	Hz	Hz	Hz	Hz	Hz	kHz	kHz	kHz	kHz	kHz	kHz	kHz	kHz	kHz	kHz	kHz	
Lw (1/3) dB	67.2	68.4	63.0	63.8	61.7	55.4	48.9	54.0	53.8	50.8	50.8	50.0	49.6	50.9	47.3	46.7	46.5	42.9	39.9	36.9	34.3	32.0	29.2	25.4	
Induct Lw dB		71.5			66.3			57.5			55.3			54.3			50.5			42.4			34.4		
LW Total	72.9 dB (re 1 x 10 ⁻¹² watts)																								
LW (A) Total	59.1 dB																								

Sound Power Level, Lw dB



Data Sheet Produced By

Signed

Date

Paul Horsley MIOA
Paul Horsley Acoustics Ltd
1 Upper Lane, Gomersal, BD19 4JD
Tel - 01274 879 020

08.10.14



Paul Horsley Acoustics Ltd
Acoustics & Noise Control Consultancy

CLIENT Toshiba Air Conditioning (UK) Ltd

DATE 08/10/2014

DATA SHEET No J2303-0023

DETERMINATION OF INDUCT SOUND POWER LEVEL IN ACCORDANCE WITH BS EN ISO 5136:2009

Model Reference Toshiba MMD-AP0244SPH-E **UNIT SETTINGS** Standard / Medium

Specific Parameters

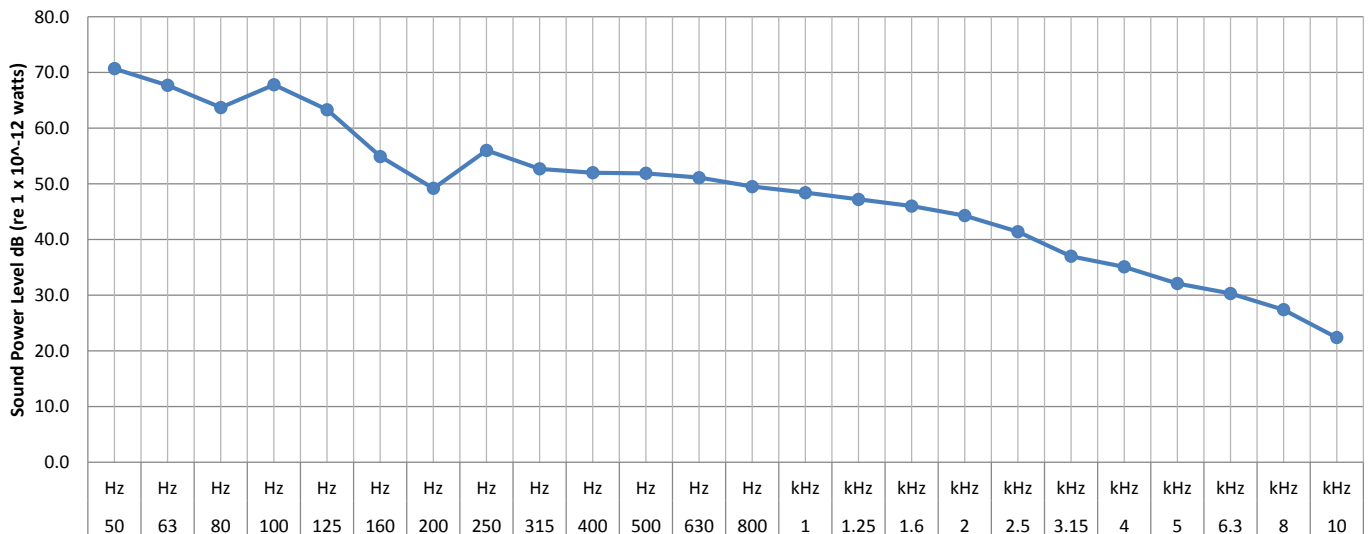
Standard Air Volume 1000 cu.m/hr

Standard Operating Pressure 10 Pa

INDUCT SOUND POWER LEVEL - SUPPLY AIR

Frequency	50	63	80	100	125	160	200	250	315	400	500	630	800	1	1.3	1.6	2	2.5	3.2	4	5	6.3	8	10	
	Hz	Hz	Hz	Hz	Hz	Hz	Hz	Hz	Hz	Hz	Hz	Hz	Hz	kHz	kHz	kHz	kHz	kHz	kHz	kHz	kHz	kHz	kHz	kHz	
Lw (1/3) dB	70.7	67.7	63.7	67.8	63.3	54.9	49.2	56.0	52.7	52.0	51.9	51.1	49.5	48.4	47.2	46.0	44.3	41.4	37.0	35.1	32.1	30.3	27.4	22.4	
Induct Lw dB		73.0			69.3			58.2			56.5			53.2			49.1			39.9			32.5		
LW Total	74.8 dB (re 1 x 10 ⁻¹² watts)																								
LW (A) Total	59.5 dB																								

Sound Power Level, Lw dB



Data Sheet Produced By

Paul Horsley MIOA
Paul Horsley Acoustics Ltd
1 Upper Lane, Gomersal, BD19 4JD
Tel - 01274 879 020

Signed

Date

08.10.14



Paul Horsley Acoustics Ltd
Acoustics & Noise Control Consultancy

CLIENT Toshiba Air Conditioning (UK) Ltd

DATE 08/10/2014

DATA SHEET No J2303-0024

DETERMINATION OF INDUCT SOUND POWER LEVEL IN ACCORDANCE WITH BS EN ISO 5136:2009

Model Reference Toshiba MMD-AP0244SPH-E **UNIT SETTINGS** Standard /High

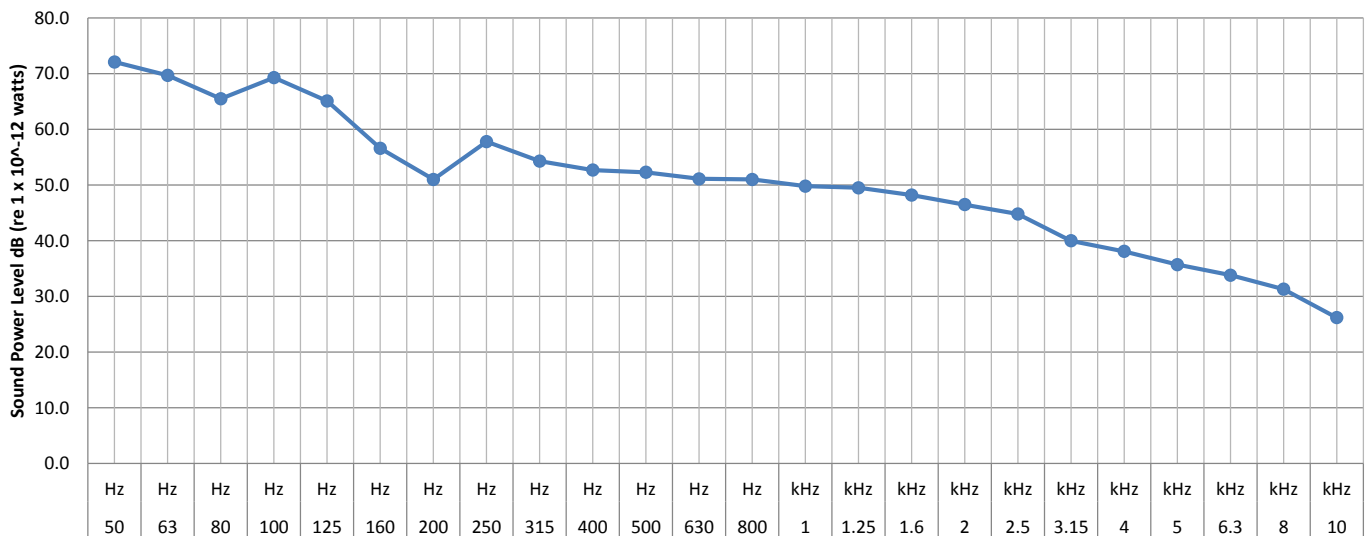
Specific Parameters

Standard Air Volume 1080 cu.m/hr
Standard Operating Pressure 10 Pa

INDUCT SOUND POWER LEVEL - SUPPLY AIR

Frequency	50	63	80	100	125	160	200	250	315	400	500	630	800	1	1.3	1.6	2	2.5	3.2	4	5	6.3	8	10	
	Hz	Hz	Hz	Hz	Hz	Hz	Hz	Hz	Hz	Hz	Hz	Hz	Hz	kHz	kHz	kHz	kHz	kHz	kHz	kHz	kHz	kHz	kHz	kHz	
Lw (1/3) dB	72.1	69.7	65.5	69.3	65.1	56.6	51.0	57.8	54.3	52.7	52.3	51.1	51.0	49.8	49.5	48.2	46.5	44.8	40.0	38.1	35.7	33.8	31.3	26.2	
Induct Lw dB		74.6			70.9			60.0			56.9			54.9			51.5			43.0			36.2		
LW Total	76.3 dB (re 1 x 10 ⁻¹² watts)																								
LW (A) Total	61.0 dB																								

Sound Power Level, Lw dB



Data Sheet Produced By

Paul Horsley MIOA
Paul Horsley Acoustics Ltd
1 Upper Lane, Gomersal, BD19 4JD
Tel - 01274 879 020

Signed

Date

08.10.14



Paul Horsley Acoustics Ltd
Acoustics & Noise Control Consultancy

CLIENT Toshiba Air Conditioning (UK) Ltd

DATE 09/10/2014

DATA SHEET No J2303-0028

DETERMINATION OF INDUCT SOUND POWER LEVEL IN ACCORDANCE WITH BS EN ISO 5136:2009

Model Reference Toshiba MMD-AP0274SPH-E **UNIT SETTINGS** Standard / Low

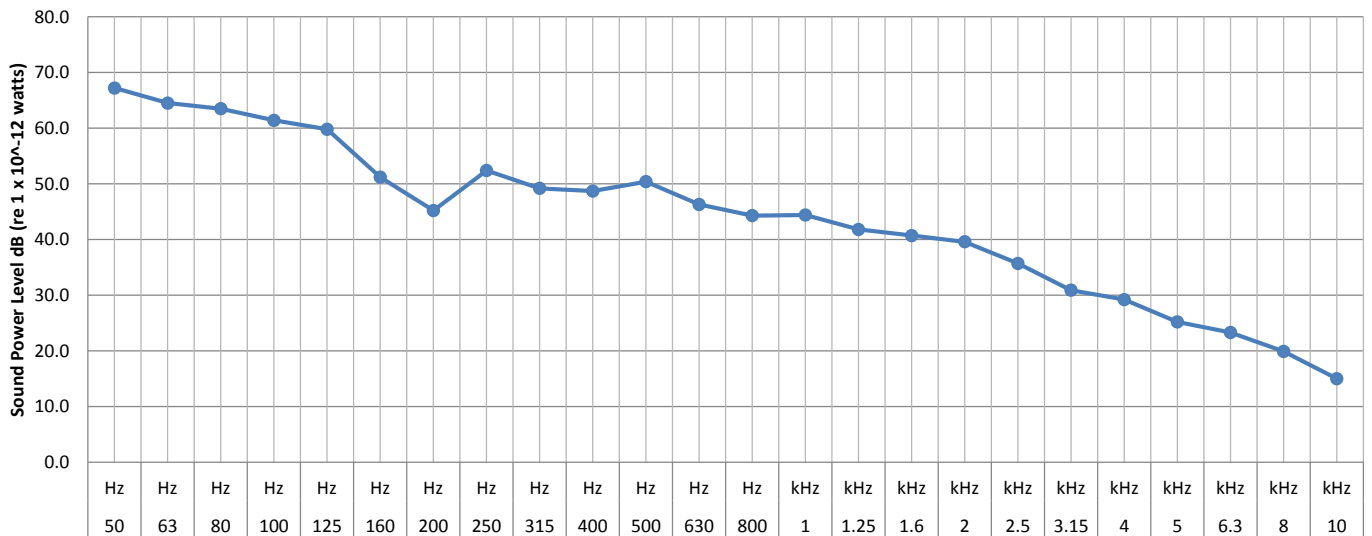
Specific Parameters

Standard Air Volume 900 cu.m/hr
Standard Operating Pressure 10 Pa

INDUCT SOUND POWER LEVEL - SUPPLY AIR

Frequency	50	63	80	100	125	160	200	250	315	400	500	630	800	1	1.3	1.6	2	2.5	3.2	4	5	6.3	8	10	
	Hz	Hz	Hz	Hz	Hz	Hz	Hz	Hz	Hz	Hz	Hz	Hz	Hz	kHz	kHz	kHz	kHz	kHz	kHz	kHz	kHz	kHz	kHz	kHz	
Lw (1/3) dB	67.2	64.5	63.5	61.4	59.8	51.2	45.2	52.4	49.2	48.7	50.4	46.3	44.3	44.4	41.8	40.7	39.6	35.7	30.9	29.2	25.2	23.3	19.9	15.0	
Induct Lw dB		70.1			63.9			54.6			53.5			48.4			43.9			33.8			25.4		
LW Total	71.2 dB (re 1 x 10 ⁻¹² watts)																								
LW (A) Total	55.3 dB																								

Sound Power Level, Lw dB



Data Sheet Produced By

Paul Horsley MIOA
Paul Horsley Acoustics Ltd
1 Upper Lane, Gomersal, BD19 4JD
Tel - 01274 879 020

Signed

Date

09.10.14



Paul Horsley Acoustics Ltd
Acoustics & Noise Control Consultancy

CLIENT Toshiba Air Conditioning (UK) Ltd

DATE 09/10/2014

DATA SHEET No J2303-0029

DETERMINATION OF INDUCT SOUND POWER LEVEL IN ACCORDANCE WITH BS EN ISO 5136:2009

Model Reference Toshiba MMD-AP0274SPH-E **UNIT SETTINGS** Standard / Medium

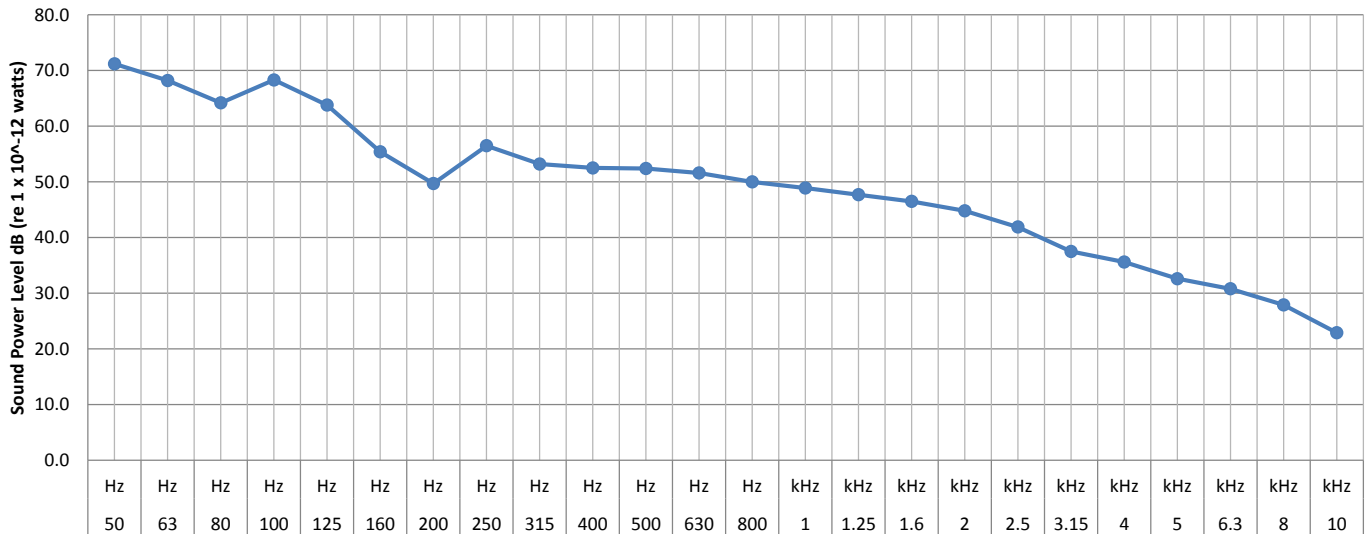
Specific Parameters

Standard Air Volume 1000 cu.m/hr
Standard Operating Pressure 10 Pa

INDUCT SOUND POWER LEVEL - SUPPLY AIR

Frequency	50	63	80	100	125	160	200	250	315	400	500	630	800	1	1.3	1.6	2	2.5	3.2	4	5	6.3	8	10	
	Hz	Hz	Hz	Hz	Hz	Hz	Hz	Hz	Hz	Hz	Hz	Hz	Hz	kHz	kHz	kHz	kHz	kHz	kHz	kHz	kHz	kHz	kHz	kHz	
Lw (1/3) dB	71.2	68.2	64.2	68.3	63.8	55.4	49.7	56.5	53.2	52.5	52.4	51.6	50.0	48.9	47.7	46.5	44.8	41.9	37.5	35.6	32.6	30.8	27.9	22.9	
Induct Lw dB		73.5			69.8			58.7			57.0			53.7			49.6			40.4			33.0		
LW Total	75.3 dB (re 1 x 10 ⁻¹² watts)																								
LW (A) Total	60.0 dB																								

Sound Power Level, Lw dB



Data Sheet Produced By

Paul Horsley MIOA
Paul Horsley Acoustics Ltd
1 Upper Lane, Gomersal, BD19 4JD
Tel - 01274 879 020

Signed

Date

09.10.14

