

# RAV/VRF Individual remote controller

## > INFRARED REMOTE CONTROLLER

One remote compatible with every LC/VRF indoor units



- Easy to use remote controller with direct access to every function
- In addition of standard function, HI power, Quiet and Comfort sleep mode
- 2 steps timer mode
- Included with KRT/MMK-AP\*\*\*H-E high wall and MML-AP\*\*\*NH-E bi-flow console



RBC-AX41U(W)-E

- Panel corner receiver (compatible with 4-Way smart cassette)



RBC-AX32U(W)-E

- Panel corner receiver (compatible with standard 4-Way cassettes)



RBC-AX32UM(W)-E

- Panel corner receiver (compatible with compact 4-Way cassette)



RBC-AX33CE

- Front panel receiver (compatible with ceiling and 1-Way cassette units)



TCB-AX32E2

- Stand alone receiver (compatible with all indoor units)

## > WIRED REMOTE CONTROLLER

One solution for every projects



RBC-AS41E

- The simplified wired remote controller can be connected to a single Indoor Unit, or group of up to 8 Indoor Units.
- The reduced function display and simplified button layout make this controller the ideal solution for hotel and office applications.



RBC-AMT32E

- The standard remote controller can control an individual indoor unit or a group of 8 indoor units.
- The remote control allows the operating parameters to be set for the indoor unit. It also allows faults to be displayed and unit configurations to be set up. The schedule timer can be fitted to this remote control.



RBC-AMS41E

- This controller is based on the standard wired controller. A built-in 7-day timer function making it an ideal solution for any light commercial or VRF application that requires schedule timer operations or Night setback control.
- The 7-Day timer function can set multiple Indoor Unit parameters and can control: Operation ON/OFF, Operation Mode, Set Temperature, Energy Saving Function\*, Frost Protection Function\* and button restrictions.



RBC-AMS55E-ES/EN

- This is the ultimate local remote controller with a built in 7-Day Timer-featuring, a multi-language LCD display with backlight, Energy Saving Options and a Return back function. In addition of standard features, dual set point, auto summer/winter clock, soft cooling and leak detection are also integrated. Exclusif energy monitoring function available on R32 SDI.

\* Specific Unit Combination only.

## > SPECIFIC REMOTE CONTROLLER

Ventilation control



NRC-01HE

- Dedicated remote controller for Air-to-Air heat exchanger.
- Integrated functions: fan speed, freecooling, air balance volume rate, temperature management and timer.

## > SCHEDULE TIMER

Advance control device



TCB-EXS21TLE

- On/Off weekly timer with up to 3 steps per day for maximum 64 indoor units split in 8 groups.
- Direct connection on TCC Link.

# RAV/VRF Central control

## > UP TO 16 INDOOR UNITS

### On/Off controller



TCB-CC163TLE2

16-way ON/OFF controller for use with VRF, DI and SDI equipment. It is a simplified Central Control device that can be connected to up to 16 Indoor Units via the TCC-Link network to provide simple "1 touch" ON/OFF control.

## > UP TO 32 INDOOR UNITS

### Wireless control

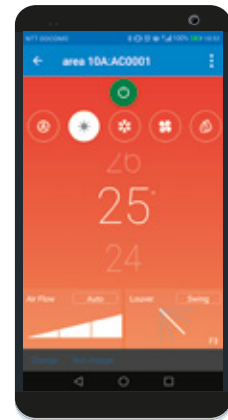


BMS-IWF0320E



**> NEW**

Directly install on TCC-link bus, the smart device control interface allows control, scheduling and error display of up to 32 indoor units through smartphone and tablets by using Any Wair application. Compatible with Android® and IOS®.



## > UP TO 64 INDOOR UNITS



The Black Pear Toshiba HVAC controller is the most versatile on the market, connecting directly to the 2-wire TCC-Link network and will control RAV 64 groups of up to 8 indoor units per group and VRF up to 64 indoor units. The integrated LCD display provides engineer's interface for local control, removing the need for a central controller and separate interface. The result saves time and commissioning is made simple with free USB-based configuration software. The units will operate on systems with or without a central controller and supports Modbus, BACnet or Trend protocols. The device is easily configured to communicate with units in the same way that a standard central controller communicates with connected units. When the controller is powered it scans the entire network for connected indoor units. The keypad controller can be used to operate all indoor units. This feature is very useful in the event of a BMS failure in providing and enabling continuous communication. The controller can be configured by a PC interface to group units and name zones.

There are 3 models providing different protocol solutions:

- RBC-BPB1 BACnet / IP
- RBC-BPM1 Modbus RTU via RS232/RS485 and Modbus TCP
- RBC-BPT1 Trend via Ethernet (requires an IQ3/4 outstation with spare memory)

# RAV/VRF Touch Screen

## > TOUCH SCREEN 64 - UP TO 64 INDOOR UNITS

### Centralized Touch Screen Controller



RBC-TBPTS

- Centralized control of max 64 indoor units
- Colour touch screen
- User friendly interface (indoor unit and room naming)
- One by one FCU or global system control: On/Off, mode, fan speed, louvers, set point and prohibit mode.
- Daily, weekly, monthly and annually timer
- Fault code access
- Multilanguage interface

## > TOUCH SCREEN 512 - UP TO 512 INDOOR UNITS

### Centralized Touch Screen Controller



BMS-CT5121E

- Full control of max 512 indoor units: on/off, mode, set point, fan speed, louver management and prohibit mode
- 12.1 large screens
- Quick and accurate view of indoor unit status through dedicated logo.
- Floor, building, tenant and system overview with possibility to integrate plan
- Built in web server for control through web browser
- Weekly timer with up to 20 steps per day
- Energy monitoring with graph, to view operating hours, set point, inside/outside temperature, and power consumption
- Email alert in case of troubles

# RAV/VRF Central control

## > UP TO 128 INDOOR UNITS

### Compliant Manager



BMS-CM1280TLE

This controller is an advanced Central Control device that can be connected to up to 128 Indoor Units (2 x 64 IDU TCC-Link Connections). It offers all of the functionality of the standard Central controller like On/Off, mode selection, fan speed control, louver, prohibition. Compatible with TCB-EXS21TLE Schedule Timer.

### Smart Manager



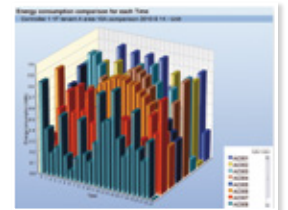
BMS-SM1281ETLE

The Smart Manager has the same hardware control function as the Compliant Manager, but also has the ability of control from a Local Area Network with dedicated interface accessible from every Web Browser. Energy Monitoring and Data Analyser function is included and brings to the user strong tool to analyse power consumption day by day, hour by hour and finally save energy.

This controller is ideal where advanced control, Energy Monitoring, advanced scheduling or access to individual Air Conditioners is required from networked computer systems.



Energy consumption history



Energy consumption comparison