

S-Plasma ion KIT installation manual

Code NO : DB98-33294A(3)

Model: MSD-EAN1

Safety precaution

This installation manual explains how to install an S-Plasma ion KIT to an ERV and a Duct (applicable for specified models only).
Please read this manual thoroughly before installing the product.
(Please refer to appropriate installation for any optional product installation.)



WARNING

Hazards or unsafe practices that may result in **severe personal injury or death**.



CAUTION

Hazards or unsafe practices that may result in **minor personal injury or property damage**.

WARNING

- ◆ Contact a qualified installer or a service center for the installation.
- ◆ Do not attempt to repair, disassemble, or modify the appliance yourself.
 - Failure to do so may result in product malfunction, electric shock, or fire.
 - So when repairing the product, contact a qualified installer or a service center.
- ◆ When detaching or disposing of an S-Plasma ion KIT, contact a qualified installer or a service center.
- ◆ Install an S-Plasma ion KIT securely in a designated place, using the installation accessories.
 - If the S-Plasma ion kit is not installed securely, the component might fall off and get damaged.
- ◆ Do not touch the pin of an S-Plasma ion KIT with hands nor insert foreign matter.
 - Failure to do so may result in product malfunction or electric shock.

Installing an S-Plasma ion KIT

Accessories

Name	ASS'Y S-Plasma ion	Tape	Installation manual
Quantity	1	1	1
Shape			



- When installing an S-Plasma ion KIT, you must use the specified components.

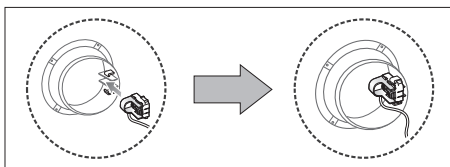
ERV

S-Plasma ion KIT installation

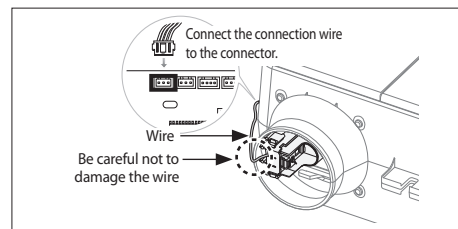


- S-Plasma ion KIT should be placed before the duct installation.

1. Push the S-Plasma ion KIT into the designated place on the duct until you hear click sound.



2. Take the connection wire out of the duct and connect it to the connector.



- Connect the connection wire to the connector after completing the installation.

3. Set the S-Plasma ion KIT operation option of Ass'y main PBA.

Model	No.	ON	OFF
ERV	SW05 K7		Not use
ERV Plus (ERV with Dx-Coil)	SW08 K14		Use

ERV(Continue)

Operation

- ▶ When an ERV is in operation, S-Plasma ion will be switched on and when an ERV is not in operation, S-Plasma ion will be switched off.
- ▶ S-Plasma ion cannot be turned ON/OFF by using a button on a remote controller.
- ▶ If there is an operation malfunction, refer to the set service manual.

Duct

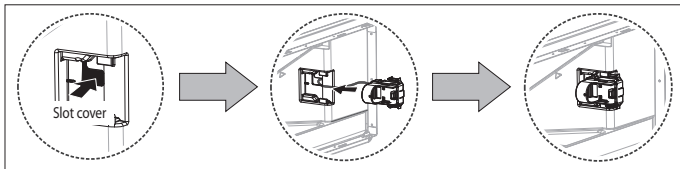
S-Plasma ion KIT installation



- S-Plasma ion KIT should be placed before the duct installation.
- Applicable for specified models only(Refer to the indoor unit manual).

1. After detaching the slot cover, push the S-Plasma ion KIT into the designated place on the outlet part until you hear click sound.

- * The appearance of the indoor unit may be different from the picture depending on the model.

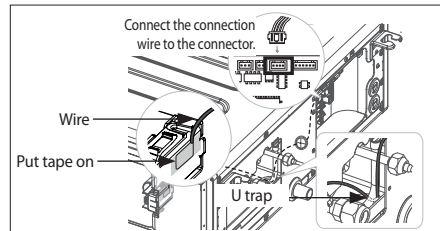


2. Place the connection wire to pass through the pipe room and connect the wire to the connector.

- ▶ The U trap wire should be placed before the C/BOX hole.



- Connect the connection wire to the connector after completing the installation.
- If the wire is not placed as U trap, water can permeate the C/BOX by the wire.



3. Set the S-Plasma ion Kit use option using a remote controller.

- ▶ S-Plasma ion KIT is an optional part, so factory default setting of an indoor unit is 'Disuse of S-Plasma ion KIT'. When you install the S-Plasma ion KIT additionally, you need to set the option for correct operation of S-Plasma ion KIT as listed below.
- ▶ Modify the SEG 16 with SET option code and set the Use / Disuse of S-Plasma ion KIT.
- ▶ Input the setting option more than twice.
- * For the correct operation, please reset the power supply after inputting an option.

Option No.: 02XXXX-1XXXXX-2XXXXX-3XXXXX

SEG1	SEG2	SEG3	SEG4	SEG5	SEG6	
0	2	*	*	*	*	
SEG7	SEG8	SEG9	SEG10	SEG11	SEG12	
1	*	*	*	*	*	
SEG13	SEG14	SEG15	SEG16	SEG17	SEG18	
2	*	*	S-Plasma ion		*	*
			Indication	Details		
			0	Disuse		
			1	Use		
SEG19	SEG20	SEG21	SEG22	SEG23	SEG24	
3	*	*	*	*	*	

- * To input the option code, please refer to the indoor unit manual.

Operation

- ▶ S-Plasma ion ON/OFF control is available with the button on the remote controller.
- ▶ If there is an operation malfunction, refer to the set service manual.