

SAMSUNG

ERV Plus






- ERV – Energy Recovery Ventilation
- Highly Efficient Heat Transfer
- Prevents Frost Formation
- DX Coil
- Humidifier Element
- Optional – CO₂ sensor

Specification

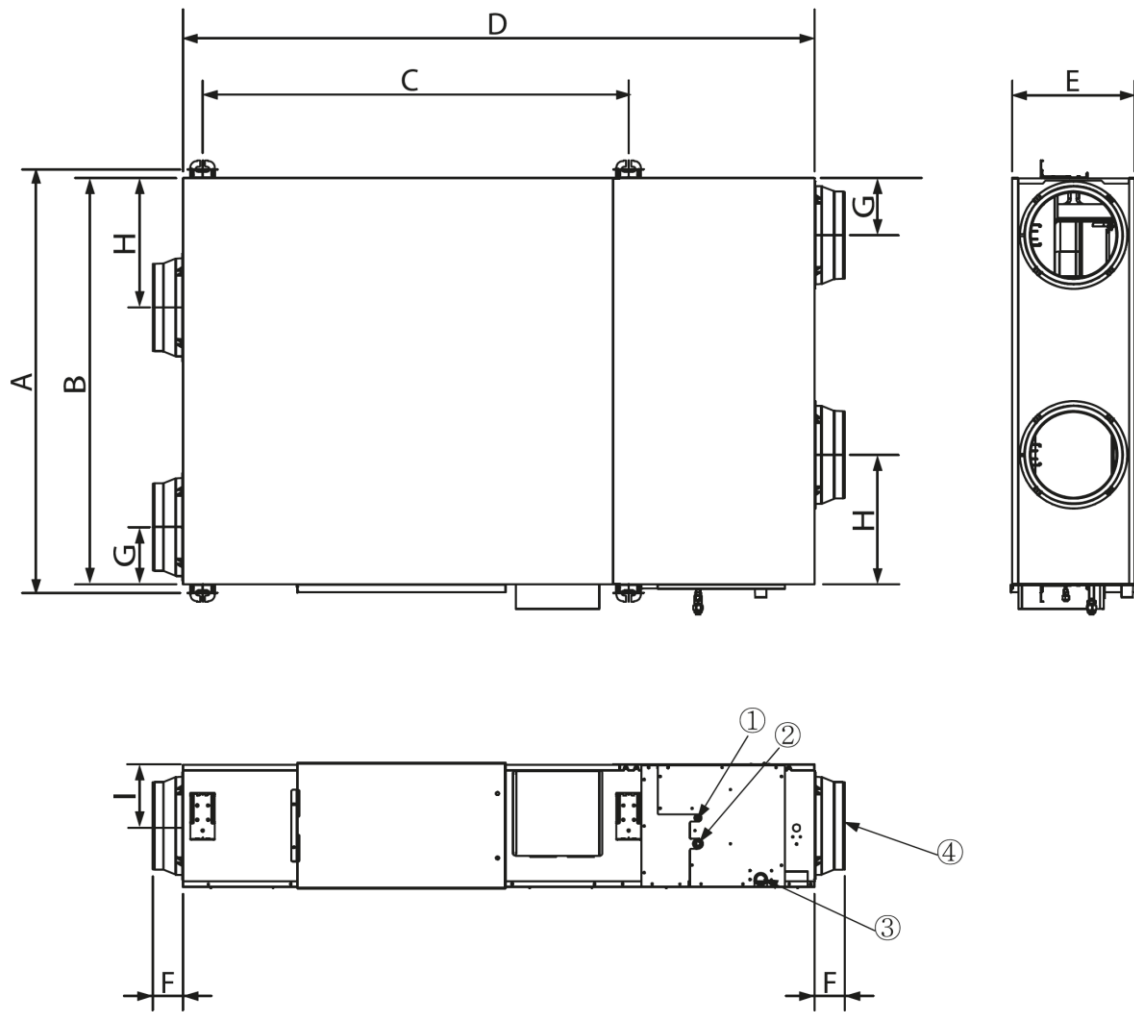
Model				AM050FNKDEH/EU	AM100FNKDEH/EU
Power Supply				1, 2, 220-240, 50	1, 2, 220-240, 50
Performance	Temp. Exchange Efficiency	Cooling	Turbo/High/Low	-	70/70/74
		Heating	Turbo/High/Low	-	75/75/79
	Effective Enthalpy Exchange Efficiency	Cooling	Turbo/High/Low	-	60/60/66
		Heating	Turbo/High/Low	-	73/73/79
	Outside Air Processing Capacity	Cooling (DX Coil/Element)		-	5.1(3.6/1.5)
Heating (DX Coil/Element)		-	6.5(4.0/2.5)	13.2(8.0/5.2)	
Fan	Airflow rate	Turbo/High/Low(UL)		CMH	500/500/360
				l/s	138.9/138.9/100
	External Static pressure	Turbo/High/Low		mmAq	16.3/10.2/8.7
				Pa	160/100/85
	Motor	Type		-	BLDC
Output		W		180	
Quantity		EA		2	
Power	Power Input	Turbo/High/Low		W	220/140/90
	Current Input	Turbo/High/Low		A	1.7/1.0/0.6
Piping Connections	Liquid Pipe			Ø, mm	6,35
				Ø, inch	1/4"
	Gas Pipe			Ø, mm	12,7
				Ø, inch	1/2"
	Drain Pipe			Ø, mm	VP25 (OD32, ID25)
				Ø, inch	VP25 (OD 1-1/4", ID 1")
Water Supply			Ø, mm	12,7	
			Ø, inch	1/2"	
Field Wiring	Power Source Wire			mm ²	1.5/2.5
	Transmission Cable			mm ²	0.75~1.5
Refrigerant	Type			-	R410A
	Control Method			-	EEV
Sound Pressure	Sound Level	Turbo / High / Low	dBA		36 / 32 / 28
Dimensions	Net Weight			kg	61
	Net Dimensions (W×H×D)			mm	1,553 x 270 x 1,000
	Supply/Return/Exhaust/Outside Duct Flange (Ø)			mm	200
Accessory	Air Filter			-	High Efficiency Filter(PP)
Optional Accessory	Humidifier	Type			-
		Qty			EA
		Amount			kg/h
		Pressure Feed Water			MPa
	S-Plasma Ion Kit			-	MSD-EAN1
	CO2 Sensor			-	MOS-C1
Ambient Condition	Around Unit			-	0~40°C DB, 80%RH or less
	Outdoor Air			-	-15~40°C DB, 80%RH or less
	Return Air			-	0~40°C DB, 80%RH or less

Accessories

Individual Controllers (Optional)	CO2 Sensor	SPI Ionizer
		
MWR-VH12N	MOS-C1	MSD-EAN1

SAMSUNG

Dimensions (mm)



Model	A	B	C	D	E	F	G	H	I
AM050FNKDEH/EU	1036	1000	987	1553	270	99	130	253	135
AM100FNKDEH/EU	1183	1135	1189	1763	340	84	160	362	170

No.	Name	Description	
1	Liquid pipe connection	ø6.35	
2	Gas pipe connection	ø12.70	
3	Drain pipe connection	VP25 (OD ø32, ID ø25)	
4	Nominal diameter for duct	AM050FNKDEH/EU	ø200
		AM100FNKDEH/EU	ø250

Learn more about Samsung Climate Solutions at: www.samsung.com/climate

Copyright © 2018 Samsung Electronics Air Conditioner B.V. All rights reserved. Samsung is a registered trademark of Samsung Electronics Co., Ltd. Specifications and designs are subject to change without notice and may include preliminary information. Nonmetric weights and measurements are approximate. All data were deemed correct at time of creation. Samsung is not liable for errors or omissions. All brand, product, service names and logos are trademarks and/or registered trademarks of their respective owners and are hereby recognized and acknowledged.

Samsung Electronics Air Conditioner Europe B.V.

Evert van de Beekstraat 310, 1118 CX Schiphol • P.O. Box 75810, 1118 ZZ Schiphol • +31 (0)8 81 41 61 00 • Netherlands

SAMSUNG