

Specifications

MSP Duct (drain pump included)

- High efficiency microchannel heat exchanger.
- Built-in electronic expansion valve (EEV) for refrigerant flow control (2000-step).
- Auto Restart function.
- Condensation drain pump.
- Long-life HD 40 permanent filter is included.
- Auto ESP function.
- SPI Ioniser.



Indoor Unit		AJ052TNMDEG/EU	
Capacity			
Cooling	kW	5.2	
Heating up to +7 °C	kW	5.6	
Performance			
Airflow Rate	m ³ /min	16.3/15.0/13.5	
Sound Power	Cooling dB(A)	59	
Sound Pressure	H/M/L dB(A)	42/41/39	
Electrical Data			
Power Source	Φ, #, V, Hz	1Φ, 2, 220-240 V, 50 Hz	
Power Consumption	Cooling W	170	
	Heating W	170	
Current Input	Cooling A	1.04	
	Heating A	1.04	
Dimensions			
Net Dimensions (W x H x D)	mm	900 x 260 x 480	
Net Weight	kg	28.3	
Refrigerant			
Piping Connections	Liquid Pipe	ø, inch	1/4
	Gas Pipe	ø, inch	1/2
Piping Connections	Drain Pipe	ø, mm	VP25 (OD 32, ID 25)
Others			
Accessories	Drain Pump	MDP-M075SGU3	
	Max. Lifting Height/Displacement	mm / litres/h	750/24
	Air Filter	Removable/Washable	

Accessories

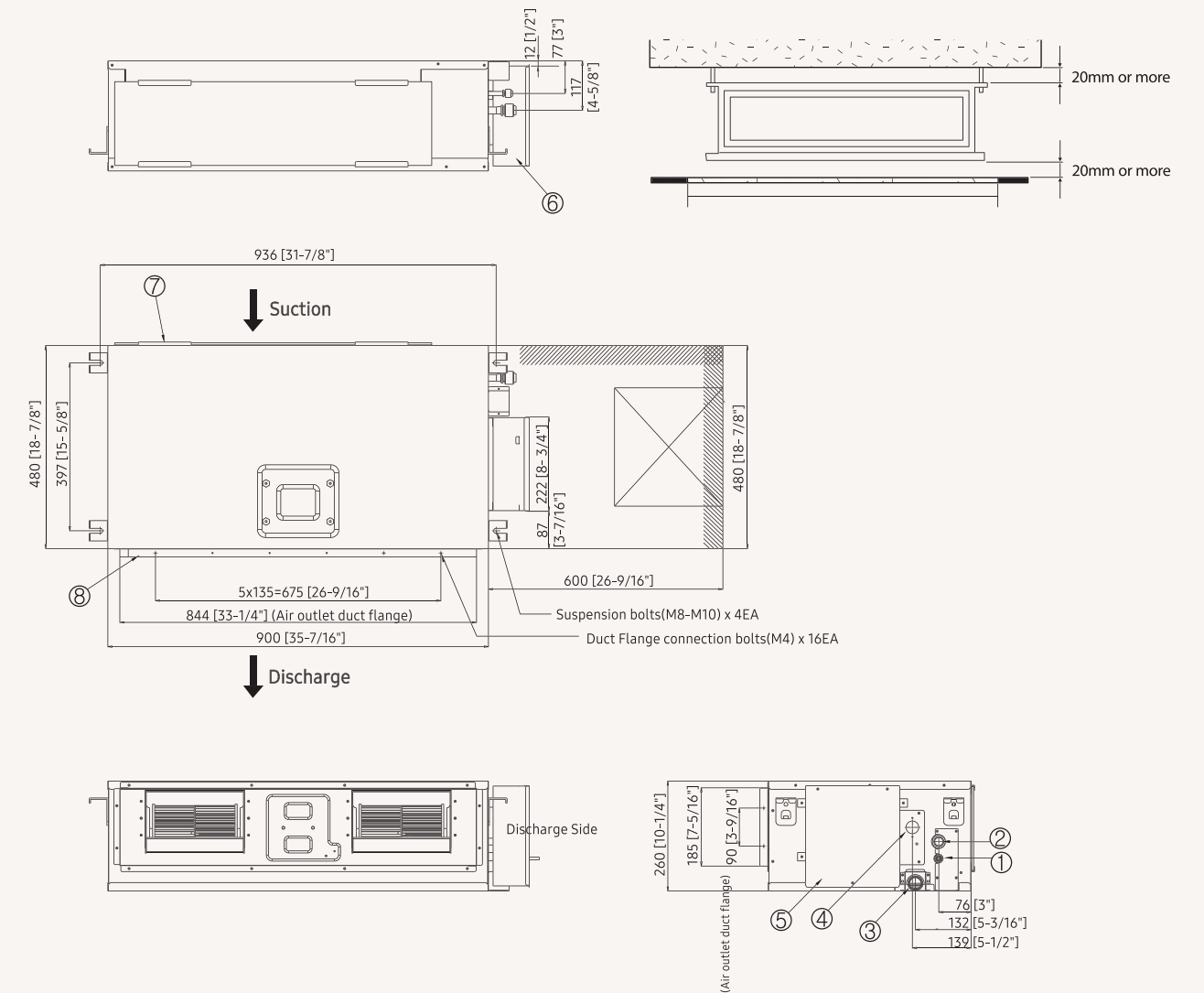


Advanced Wired Controller	Simple Type Controller	Touch Controller	Wired Remote Controller	Wi-Fi Kit
MWR-WG00JN/MWR-WG00KN	MWR-SH00N	MWR-SH11N	MWR-WE13N	MIM-H04EN

Dimensional drawings

MSP Duct (drain pump included)

AJ052TNMDEG**



NO	Name	Description
1	Liquid pipe connection	ø6.35 (1/4)
2	Gas pipe connection	ø12.70 (1/2)
3	Drain pipe connection	VP25 (OD 32, ID 25)
4	Knock-out hole for drain pump	Option kit
5	Control unit	
6	Power supply/communication wiring conduits	
7	Return air side	
8	Air outlet duct flange	