

RM_BTP
STANDARD DUCT



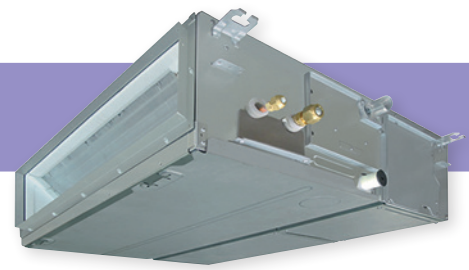
Whatever the shape of the room, this flexible model ensures a uniform temperature and air distribution for optimal end user comfort.

Adaptability

- Up to 120Pa available pressure: thanks to DC fan motor.
- Flexible design, allows the inlet air configuration to be configured between the standard rear inlet design or as an alternative, from the underside of the unit. There is also a provision for a fresh air intake supply via a pre-punched knockout hole.
- Compact and thin chassis, measuring just 275mm in height.

Easy to install

- Built-in high-lift drain pump.
- PC board panel easily accessible from the side of the unit.
- Optional air discharge spigot.



SCOP MAX



4.81

CAPACITY



5kW > 16kW

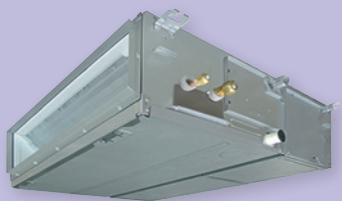
OPERATION



-27°C > +52°C

Airzone compatibility: multiple individual controlled rooms with only one indoor unit.

compatible with
AIRZONE



INDOOR UNITS

- RAV-RM561BTP-E/TR
- RAV-RM801BTP-E/TR
- RAV-GM901BTP-E/TR
- RAV-RM1101BTP-E/TR
- RAV-RM1401BTP-E/TR
- RAV-RM1601BTP-E/TR

SDI



OUTDOOR UNITS

- RAV-GP561ATP-E/TR
- RAV-GP801AT-E/TR
- RAV-GP1101AT(8)-E/TR
- RAV-GP1401AT(8)-E/TR
- RAV-GP1601AT8-E/TR

DI



- RAV-GM561ATP-E/TR
- RAV-GM801ATP-E/TR
- RAV-GM901ATP-E/TR
- RAV-GM1101AT(8)PE/TR
- RAV-GM1401AT(8)P-E/TR
- RAV-GM1601AT(8)P-E/TR



REMOTE CONTROLS

- TCB-AX32E2
- RBC-AMS55E-ES(EN)
- RBC-ASC11E
- RBC-AMT32E
- RBC-AS41E

STANDARD DUCT

STANDARD DUCT Performance data with Super Digital Inverter Series 1 1Ph

Outdoor unit			RAV-GP561ATP-E	RAV-GP801AT-E	RAV-GP1101AT-E	RAV-GP1401AT-E
Indoor unit (Standard Duct)			RAV-RM561BTP-E	RAV-RM801BTP-E	RAV-RM1101BTP-E	RAV-RM1401BTP-E
Cooling capacity	kW		5.0	7.1	10.0	12.5
Cooling range (min. - max.)	kW		1.2 - 5.6	1.9 - 8.0	3.1 - 12.0	3.1 - 14.0
Power input (min. - rated - max.)	kW	C	0.19 - 1.52 - 1.99	0.26 - 1.63 - 3.20	0.65 - 2.40 - 3.63	0.65 - 3.57 - 3.97
EER			3.29	4.36	4.17	3.50
SEER			5.60	7.50	6.60	6.06
Energy efficiency class		C	A+	A++	A++	-
Seasonal electricity consumption	kWh/a	C	312	331	530	1237
Heating capacity	kW		5.6	8.0	11.2	14.0
Heating range (min. - max.)	kW		0.9 - 7.4	1.3 - 11.3	2.6 - 13.0	2.6 - 16.5
Power input (min. - rated - max.)	kW	H	0.16 - 1.61 - 2.76	0.20 - 1.85 - 3.55	0.47 - 2.73 - 3.38	0.47 - 3.63 - 4.43
COP	W/W		3.48	4.32	4.10	3.86
SCOP			4.24	4.81	4.24	4.24
Energy efficiency class		H	A+	A++	A+	-
Seasonal electricity consumption	kWh/a	H	1254	1484	3032	3168

STANDARD DUCT Performance data with Super Digital Inverter Series 1 3Ph

Outdoor unit			RAV-GP1101AT8-E	RAV-GP1401AT8-E	RAV-GP1601AT8-E
Indoor unit (Standard Duct)			RAV-RM1101BTP-E	RAV-RM1401BTP-E	RAV-RM1601BTP-E
Cooling capacity	kW		10.0	12.5	14.0
Cooling range (min. - max.)	kW		2.6 - 12.0	2.6 - 14.0	2.6 - 16.0
Power input (min. - rated - max.)	kW	C	0.66 - 2.58 - 4.01	0.66 - 3.81 - 4.89	0.66 - 4.49 - 6.50
EER			3.87	3.28	3.12
SEER			5.70	5.48	5.36
Energy efficiency class		C	A+	-	-
Seasonal electricity consumption	kWh/a	C	566	1169	1285
Heating capacity	kW		11.2	14.0	16
Heating range (min. - max.)	kW		2.40 - 15.6	2.40 - 18.0	2.4 - 19.0
Power input (min. - rated - max.)	kW	H	0.53 - 2.76 - 4.42	0.53 - 3.66 - 5.71	0.53 - 4.00 - 6.96
COP	W/W		4.06	3.83	3.50
SCOP			4.14	3.94	3.93
Energy efficiency class		H	A+	-	-
Seasonal electricity consumption	kWh/a	H	3331	3998	4003

STANDARD DUCT Performance data with Digital Inverter Series 1 1Ph & 3Ph

Outdoor unit			RAV-GM561ATP-E	RAV-GM801ATP-E	RAV-GM901ATP-E	RAV-GM1101AT(8)P-E	RAV-GM1401AT(8)P-E	RAV-GM1601AT(8)P-E
Indoor unit (Standard Duct)			RAV-RM561BTP-E	RAV-RM801BTP-E	RAV-RM901BTP-E	RAV-RM1101BTP-E	RAV-RM1401BTP-E	RAV-RM1601BTP-E
Cooling capacity	kW		5.0	6.7	8.0	9.5	12.1	14.0
Cooling range (min. - max.)	kW		1.5 - 5.6	1.5 - 8.0	1.9 - 8.8	3.0 - 11.2	3.0 - 13.2	3.0 - 16.0
Power input (min. - rated - max.)	kW	C	0.31 - 1.83 - 2.05	0.31 - 2.38 - 2.76	2.67	0.60 - 2.99 - 4.50	0.60 - 4.42 - 4.71	5.13
EER			2.73	2.82	3.00	3.18	2.74	2.73
SEER			5.28	5.20	6.10	5.28	5.36	5.30
Energy efficiency class		C	A	A	A++	A	-	-
Seasonal electricity consumption	kWh/a	C	332	451	459	629	-	-
Heating capacity	kW		5.3	7.7	9.0	11.2	13.0	16.0
Heating range (min. - max.)	kW		1.5 - 6.3	1.5 - 9.0	1.6 - 9.9	3.0 - 13.0	3.0 - 16.0	3.0 - 18.0
Power input (min. - rated - max.)	kW	H	0.31 - 1.62 - 2.47	0.31 - 2.32 - 3.18	2.65	0.60 - 2.99 - 4.00	0.60 - 3.60 - 4.55	4.69
COP	W/W		3.27	3.32	3.40	3.75	3.61	3.41
SCOP			4.08	4.13	4.60	4.19	4.19	3.90
Energy efficiency class		H	A+	A+	A++	A+	-	-
Seasonal electricity consumption	kWh/a	H	960	1728	1917	2537	-	-

STANDARD DUCT Physical data indoor

Indoor unit			RAV-RM561BTP-E	RAV-RM801BTP-E	RAV-RM901BTP-E	RAV-RM1101BTP-E	RAV-RM1401BTP-E	RAV-RM1601BTP-E
Air Flow (H/L)	m³/h - l/s		800/480 - 222/133	1200/720 - 333/200	1700/1000 - 472/278	2100/1260 - 583/350	2100/1260 - 583/350	2100/1260 - 583/350
Sound pressure level (H-M-L)*	dB(A)		33-29-25	34-30-26	37-33-30	40-36-33	40-36-33	40-36-33
Sound power level (H-M-L)*	dB(A)		48-44-40	49-45-41	52-48-45	55-51-48	55-51-48	55-51-48
Dimensions (HxWxD)	mm		275 x 700 x 750	275 x 1000 x 750	275 x 1400 x 750	275 x 1400 x 750	275 x 1400 x 750	275 x 1400 x 750
Weight	kg		23	30	40	40	40	40
External static pressure (stand/upper limit)	Pa		30/120	30/120	50/120	50/120	50/120	50/120

C: cooling mode
H: heating mode
*bottom air inlet

➤ LIGHT COMMERCIAL