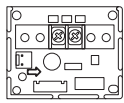
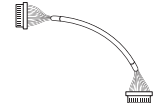
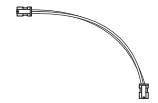
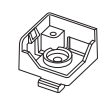


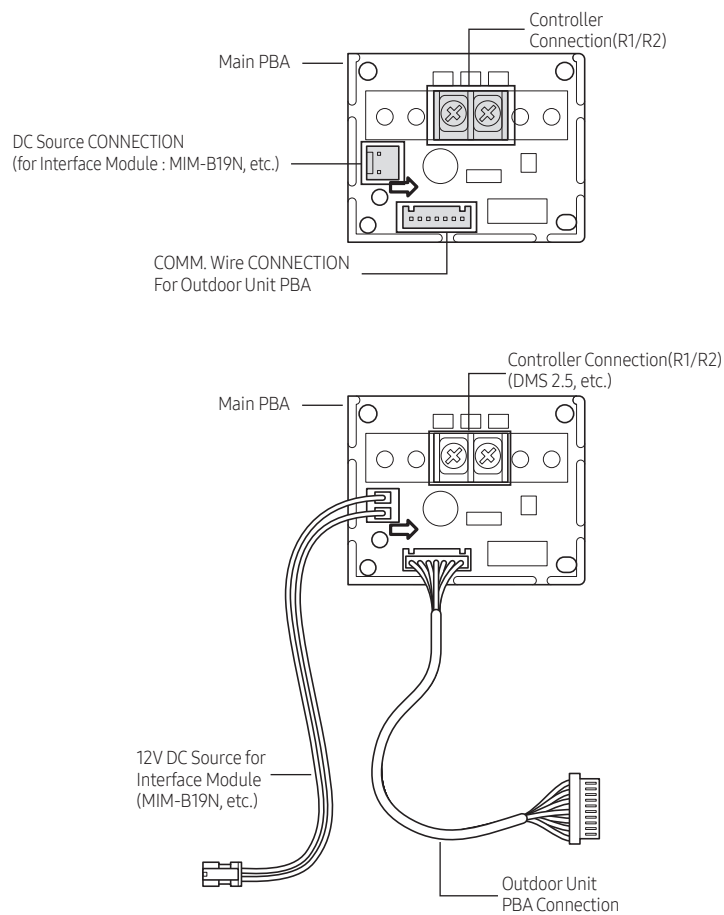
Remocon module installation

Model : MIM-R10N / R10UN

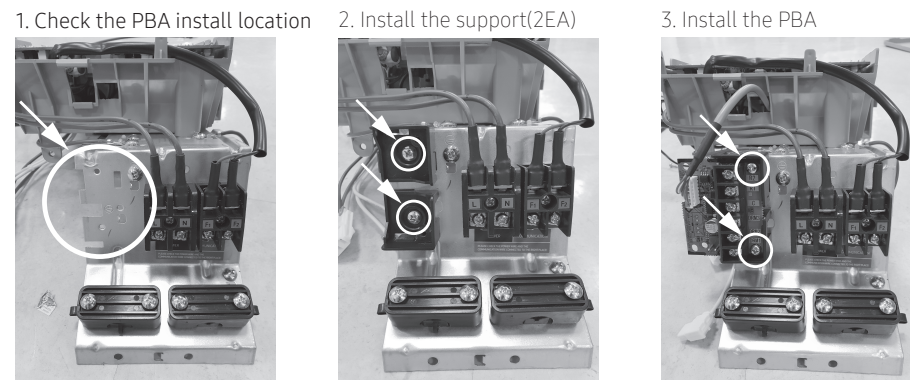
Components part

Product Name	Main PBA	COMM. Wire	DC Source Wire	Support PBA
Quantity	1EA	1EA	1EA	2EA
Shape				
Code	DB92-04835A	DB93-17173A	DB39-00378B	DB61-04398A

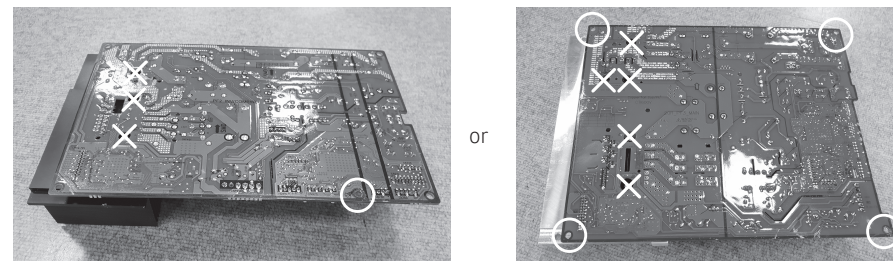
Description



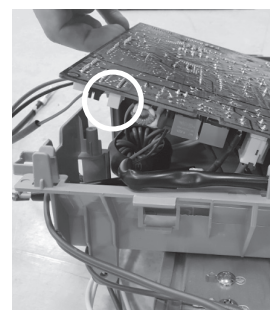
Installation



4. Remove the PBA screw (Not the heat sink screw)



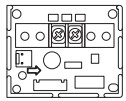
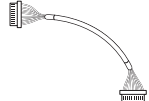
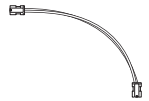
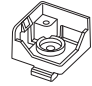
5. Pull up the PBA of outdoor unit and connect to CN320 (White 7 pin connector)



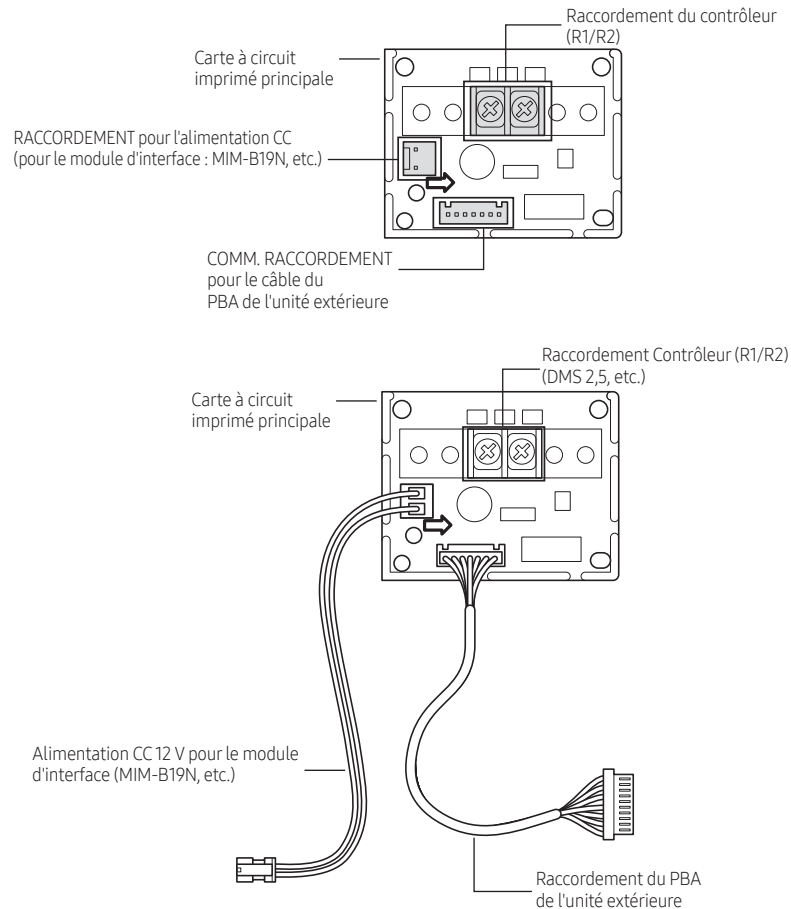
Installation du module avec contrôle à distance

■ Modèle : MIM-R10N / R10UN

Pièce des composants

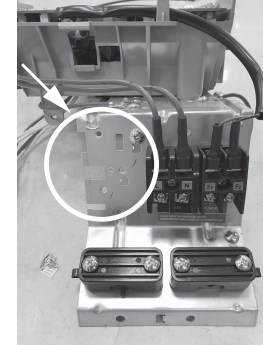
Nom du produit	Carte à circuit imprimé principale	COMM. Câble	Câble pour alimentation CC	Support - PBA
Quantité	1EA	1EA	1EA	2EA
Forme				
Code	DB92-04835A	DB93-17173A	DB39-00378B	DB61-04398A

Description



Installation

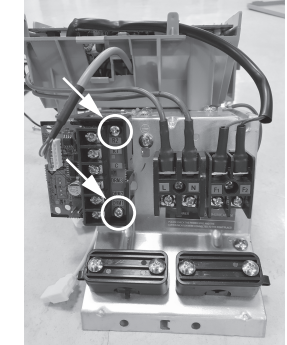
1. Vérifier l'emplacement d'installation du PBA



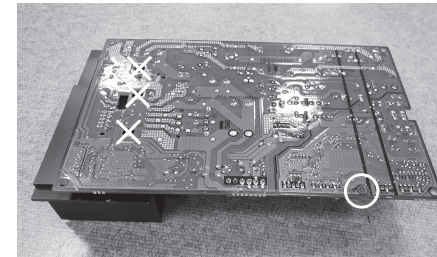
2. Installer le support (2EA)



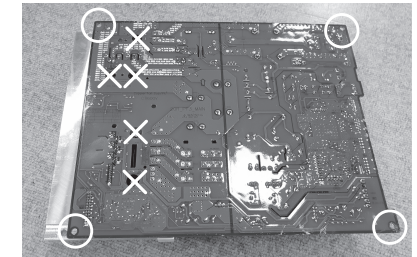
3. Installer le PBA



4. Enlever la vis du PBA (et non la vis du dissipateur thermique)



OU



5. Tirer le PBA de l'unité extérieure et le connecter à CN320 (connecteur blanc à 7 broches)

